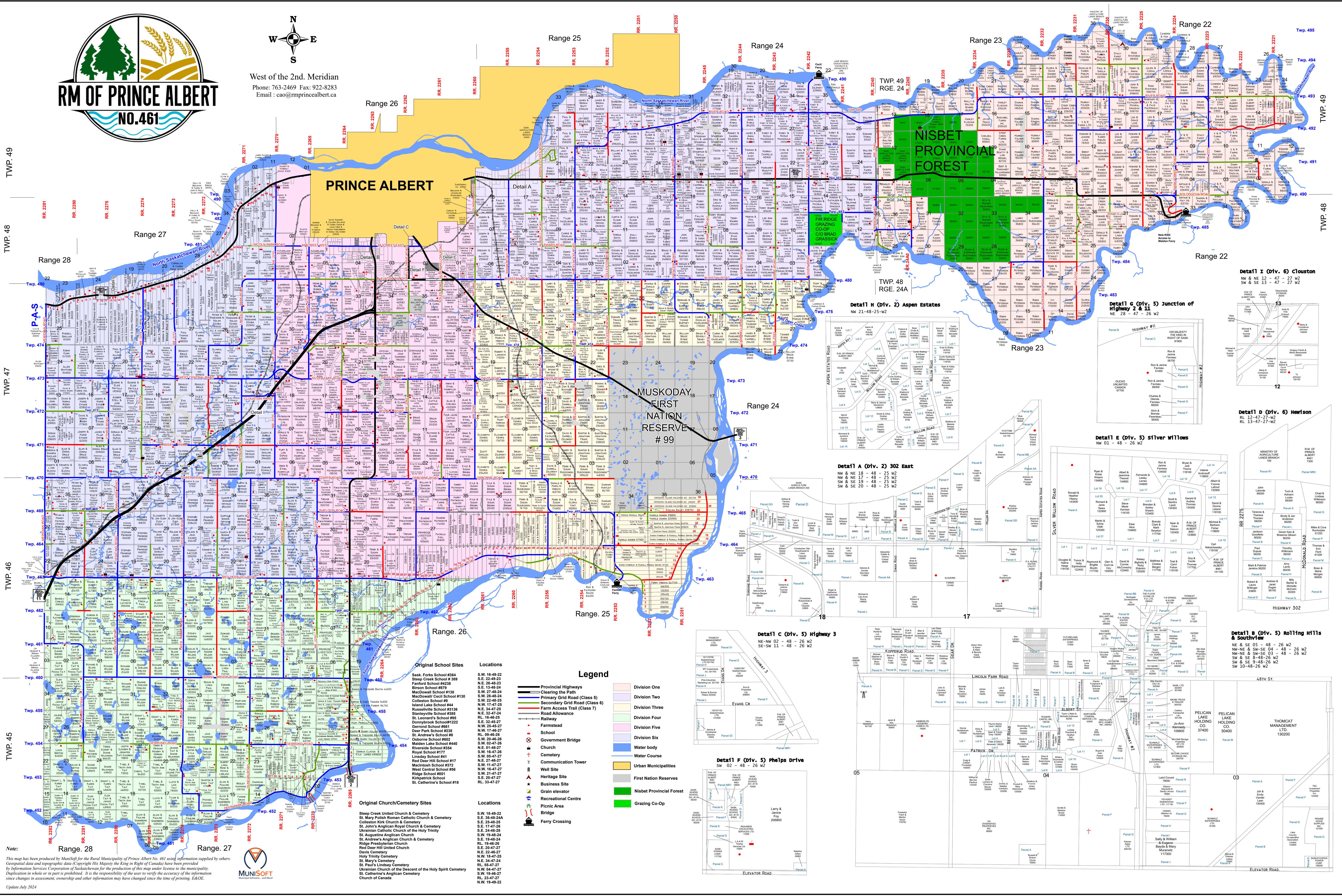




West of the 2nd. Meridian  
 Phone: 763-2469 Fax: 922-8283  
 Email: cao@municipalprincealbert.ca



TWP. 49  
TWP. 48  
TWP. 47  
TWP. 46  
TWP. 45

Range 22  
Range 23  
Range 24  
Range 25  
Range 26  
Range 27  
Range 28

PRINCE ALBERT

MUSKODAY  
FIRST  
NATION  
RESERVE  
# 99

NISBET  
PROVINCIAL  
FOREST

**Legend**

- Provincial Highways
- Clearing the Path
- Primary Grid Road (Class 5)
- Secondary Grid Road (Class 6)
- Farm Access Trail (Class 7)
- Road Allowance
- Railway
- Farmstead
- School
- Government Bridge
- Church
- Cemetery
- Communication Tower
- Well Site
- Heritage Site
- Business Site
- Grain elevator
- Recreational Centre
- Picnic Area
- Bridge
- Ferry Crossing
- Division One
- Division Two
- Division Three
- Division Four
- Division Five
- Division Six
- Water body
- Water Course
- Urban Municipalities
- First Nation Reserves
- Nisbet Provincial Forest
- Grazing Co-Op

- Original School Sites**
- Sask. Forks School #364
  - Steep Creek School #369
  - Fairford School #4238
  - Birson School #879
  - MacDowall School #130
  - MacDowall Cecil School #130
  - Island Lake School #44
  - Russellville School #3136
  - Stanleyville School #365
  - St. Leonard's School #95
  - Macintosh School #222
  - Gerrond School #661
  - Deer Park School #238
  - St. Andrew's School #9
  - Osborne School #602
  - Madison Lake School #440
  - Riverside School #354
  - Royal School #177
  - Lindsay School #41
  - Red Deer Hill School #17
  - Macintosh School #872
  - West Central School #56
  - Ridge School #81
  - Kingstair School
  - St. Catherine's School #18
- Locations**
- S.W. 16-49-22
  - S.E. 22-49-23
  - N.E. 26-48-23
  - S.E. 13-48-24
  - S.W. 27-48-24
  - S.W. 29-48-24
  - S.W. 24-48-25
  - N.W. 17-47-25
  - N.E. 34-47-25
  - N.E. 32-47-24
  - S.E. 25-47-24
  - N.W. 25-45-27
  - N.W. 17-45-27
  - R.L. 19-46-26
  - S.W. 20-46-26
  - S.W. 20-47-27
  - N.E. 27-46-27
  - S.W. 11-47-27
  - N.W. 16-47-27
  - S.W. 21-47-27
  - S.E. 20-47-27
  - RL 33-47-27

- Original Church/Cemetery Sites**
- Steep Creek United Church & Cemetery
  - St. Mary Polish Roman Catholic Church & Cemetery
  - Colleton Kirk Church & Cemetery
  - St. John's Anglican Royal Church & Cemetery
  - Ukrainian Catholic Church of the Holy Trinity
  - St. Augustine Anglican Church
  - St. Andrew's Anglican Church & Cemetery
  - Ridge Presbyterian Church
  - Red Deer Hill United Church
  - Davis Cemetery
  - Holy Trinity Cemetery
  - St. Paul's Cemetery
  - St. Paul's Lindsey Cemetery
  - Ukrainian Church of the Descent of the Holy Spirit Cemetery
  - St. Catherine's Anglican Cemetery
  - Church of Canada
- Locations**
- S.W. 18-49-22
  - S.E. 36-48-24A
  - S.E. 25-48-25
  - S.E. 17-47-26
  - S.E. 24-48-28
  - S.W. 19-48-24
  - S.E. 19-48-24
  - R.L. 19-46-26
  - S.E. 20-47-27
  - N.W. 18-47-25
  - N.E. 34-47-24
  - R.L. 35-47-27
  - N.W. 04-47-27
  - S.W. 19-46-27
  - RL 23-47-27
  - N.W. 19-47-22

Note: This map has been produced by MuniSoft for the Rural Municipality of Prince Albert No. 461 using information supplied by others. Geospatial data and topographic data (Copyright His Majesty the King in Right of Canada) have been provided by Information Services Corporation of Saskatchewan for the production of this map under license to the municipality. Application in whole or in part is prohibited. It is the responsibility of the user to verify the accuracy of the information since changes in assessment, ownership and other information may have changed since the time of printing. E&OE.

