

WINTER WEIGHT SEASON 2024-2025

Nineth Order – Fall 2024

Minister's Order Pursuant to section 35 of The Highways and Transportation Act, 1997, The Vehicle Weight and Dimension Regulations, 2010, permit heavier weights on public highways during the Winter Weight Season.

The Winter Weight Season is defined in s. 2 (ggg) of the regulations as commencing on November 16 of each year and ending on March 14 of the following year.

Section 2(2) of the regulations states that if the Minister considers it necessary to protect a public highway, the Minister may issue an order under section 35 of the Act restricting the Winter Weight Season for the highways mentioned in the order for the period specified in the order.

Pursuant to section 35 of "The Highways and Transportation Act, 1997" it is hereby ordered that, **effective 12:01 am Monday December 16, 2024.**

The Winter Weight Season will be in effect for the following Provincial Highways at 12:01 am Monday December 16, 2024:

- | | |
|----------------------------------------------------------------------------------------------|------------------------------------------------|
| No. 1 From Manitoba Border to East Wolseley Access | No. 13 From East Jct 36 to Limerick |
| No. 1 From East Wolseley Access to Mortlach | No. 13 From Limerick to Alberta Border |
| No. 1 From Mortlach to Alberta Border | No. 14 From Saskatoon to Asquith |
| No. 2 From Liberty to St. Louis | No. 14 From Asquith to Alberta Border |
| No. 2 From Rockglen to Liberty | No. 15 From Jct Hwy 9 to Jct Hwy 6 |
| No. 2 From U.S. Border to Rockglen | No. 15 From Jct Hwy 20 to Jct Hwy 4 |
| No. 4 From Saskatchewan Landing to Glaslyn | No. 15 From Jct Hwy 42 to Jct Hwy 4 |
| No. 4 From U.S. Border to Saskatchewan Landing | No. 15 From Raymore to Jct Hwy 20 |
| No. 5 From Manitoba Border to Quill Lake | No. 16 From Manitoba Border to Dafoe |
| No. 5 From Quill Lake to Saskatoon | No. 16 From Jct Hwy 6 to Langham |
| No. 6 From Raymore to Naicam | No. 16 From Langham to Lloydminster |
| No. 6 From U.S. Border to Raymore | No. 17 From Jct Hwy 14 to Onion Lake |
| No. 7 From Saskatoon to Alberta Border | No. 18 From Manitoba Border to Jct Hwy 39 |
| No. 7 From Saskatoon to Delisle | No. 18 From Jct Hwy 47 to North Jct Hwy 6 |
| No. 7 From Delisle to Alberta Border | No. 18 From South Jct Hwy 6 to East Jct Hwy 36 |
| No. 8 From South Jct 22 to Forest Boundary* (Norquay to Swan Plain – 8,000 kgs if above -6o) | No. 18 From West Jct Hwy 36 to Rockglen |
| No. 8 From U.S. Border to North Jct Hwy 22 | No. 18 From Jct Hwy 2 to Val Marie |
| No. 9 From Jct 1 to Jct Hwy 983 | No. 18 From Jct Hwy 4 to Jct Hwy 13 |
| No. 9 From U.S. Border to Jct Hwy 1 | No. 19 From Jct Hwy 44 to Jct Hwy 15 |
| No. 10 From Manitoba Border to Balcarres | No. 19 From Chaplin to Jct Hwy 44 |
| No. 10 From Balcarres to Balgonie | No. 19 From Jct Hwy 18 to Jct Hwy 1 |
| No. 11 From Davidson to MacDowall | No. 20 From South Jct Hwy 15 to Jct Hwy 320 |
| No. 11 From Regina to Davidson | No. 20 From Lumsden to South Jct Hwy 15 |
| No. 12 From Saskatoon to Blaine Lake | No. 21 From Glidden to South Jct Hwy 303 |
| No. 13 From Manitoba Border to East Jct Hwy 36 | No. 21 From U.S. Border to Jct Hwy 44 |
| | No. 22 From Manitoba Border to Jct Hwy 10 |

WINTER WEIGHT SEASON 2024-2025

- No. 22 From Jct Hwy 35 to Jct Hwy 20
- No. 23 From Somme to Jct Hwy 38
- No. 26 From Jct Hwy 4 to Vawn
- No. 27 From Jct Hwy 2 to Jct Hwy 41
- No. 28 From Jct Hwy 18 to Jct Hwy 13
- No. 29 From Wilkie to Battleford
- No. 31 From Herschel Access to Grid 656
- No. 31 From Plenty to Jct Hwy 14
- No. 32 From Jct Hwy 1 to Leader
- No. 33 From Stoughton to Sedley
- No. 33 From Sedley to Regina
- No. 34 From U.S. Border to Jct Hwy 13
- No. 35 From Lipton to Jct Hwy 349
- No. 35 From U.S. Border to Lipton
- No. 36 From U.S. Border to West Jct Hwy 18
- No. 36 From Jct Hwy 13 to Jct Hwy 2
- No. 37 From U.S. Border to Cabri
- No. 38 From Jct Hwy 5 to Jct Hwy 23
- No. 39 From U.S. Border to Jct Hwy 1
- No. 40 From Blaine Lake to Alberta Border
- No. 41 From Jct Hwy 20 to Jct Hwy 5
- No. 42 From Diefenbaker Lake to Jct Hwy 342
- No. 42 From Dinsmore to Jct Hwy 15
- No. 42 From Jct 342 to Dinsmore
- No. 42 From Jct Hwy 2 to Diefenbaker Lake
- No. 43 From Jct Hwy 2 to Jct Hwy 4
- No. 44 From Jct Hwy 19 to East Jct Hwy 42
- No. 44 From Dinsmore to South Jct Hwy 21
- No. 44 From 31.7 kms East of Alsask to Jct Hwy 7 @ Alsask
- No. 45 From Lucky Lake to Delisle
- No. 46 From Balgonie to Regina
- No. 47 From Jct Hwy 247 to Preeceville
- No. 47 From U.S. Border to Jct Hwy 247
- No. 48 From Manitoba Border to Jct Hwy 9
- No. 48 From Jct Hwy 9 to White City
- No. 49 From Manitoba Border to Jct Hwy 35
- No. 51 From Jct Hwy 4 to Alberta Border
- No. 52 From Yorkton to Jct Hwy 15
- No. 54 From Jct Hwy 11 to Regina Beach
- No. 56 From Indian Head to Katepwa
- No. 56 From Katepwa to Jct Hwy 210
- No. 57 From Manitoba Border to Jct Hwy 5
- No. 58 From Jct Hwy 18 to Jct Hwy 43
- No. 58 From North Limits of Gravelbourg to Jct Hwy 1
- No. 60 From Pike Lake to Jct Hwy 7
- No. 80 From Esterhazy to Churchbridge
- No. 99 From Craven to Jct Hwy 6
- No. 201 From Jct Hwy 1 to Jct Hwy 247
- No. 202 From Jct Hwy 2 to Buffalo Pound Park
- No. 209 From Jct Hwy 9 to 5 km West
- No. 210 From Fort Qu'Appelle to Jct Hwy 10
- No. 211 From Jct Hwy 11 to Blackstrap Prov. Park
- No. 212 From Jct Hwy 11 to Fort Carlton Park
- No. 220 From Jct Hwy 20 to Rowan's Ravine Park
- No. 221 From Jct Hwy 21 to Cypress Hills Park Gate
- No. 225 From Jct Hwy 2 to Jct Hwy 312
- No. 229 From Jct Hwy 9 to Jct Hwy 47
- No. 271 From Maple Creek to Fort Walsh
- No. 301 From Jct Hwy 1 to Buffalo Pound Park
- No. 303 From Jct Hwy 21 to Jct Hwy 16
- No. 305 From Jct Hwy 11 to Jct Hwy 16
- No. 306 From Jct Hwy 35 to Riceton
- No. 306 From Riceton to Jct Hwy 6 * (8 000 kgs year round)
- No. 307 From Jct Hwy 7 to Jct Hwy 21
- No. 309 From Rhein to Jct Hwy 9
- No. 310 From Ituna to Grid 743
- No. 310 From Grid 743 to Jct Hwy 16
* (8 000 kgs year round)
- No. 310 From Foam Lake to Jct Hwy 5
- No. 310 From Balcarres to Ituna
- No. 312 From Jct Hwy 2 to Jct Hwy 12* (Gabriel Dumont Bridge – secondary weights year round)
- No. 316 From Jct Hwy 16 to Jct Hwy 5
- No. 317 From Jct Hwy 7 to Jct Hwy 31
- No. 318 From Carnduff to Alida
- No. 320 From Jct Hwy 20 to Jct Hwy 2
- No. 321 From Liebenthal to Alberta Border
- No. 322 From Jct Hwy 20 to Jct Hwy 220
- No. 324 From Jct Hwy 378 to Mayfair
- No. 332 From Jct Hwy 32 to 7.1 km W. of Hwy 32* (Max GVW 8 000 kgs)
- No. 334 From Jct Hwy 13 to Jct Hwy 39* (Max GVW 8 000 kgs from Jct Hwy 13 to Avonlea)
- No. 339 From Jct Hwy 334 to Jct Hwy 39* (Max GVW 8 000 kgs except from 11.4km to 21.2km west of Jct Hwy 334)
- No. 340 From Jct Hwy 16 to Jct Hwy 40
- No. 342 From Jct Hwy 42 to Jct Hwy 4
- No. 342 From Grid 647 to Plato Access
- No. 343 From Jct Hwy 4 to Simmie
- No. 349 From Jct Hwy 38 to Archerwill
- No. 349 From Jct Hwy 35 to Jct Hwy 6
- No. 350 From U.S. Border to Torquay
- No. 354 From Jct Hwy 11 to Dilke

WINTER WEIGHT SEASON 2024-2025

No. 357 From Togo to Jct Hwy 8
No. 358 From Wood Mountain to Limerick
No. 361 From Manitoba Border to Jct Hwy 47
No. 363 From Moose Jaw to Old Wives
No. 363 From Old Wives to Jct Hwy 4
No. 364 From Jct Hwy 10 to Balgonie
No. 365 From Watrous to Jct Hwy 16
No. 367 From Jct Hwy 42 to Jct Hwy 19
No. 368 From Jct Hwy 5 to St. Brieux

No. 369 From Jct Hwy 10 to Togo
No. 373 From Jct Hwy 42 to Jct Hwy 45
No. 374 From Jct Hwy 21 to Jct Hwy 14
No. 376 From Jct Hwy 14 to Jct Hwy 324
No. 378 From Jct Hwy 4 to Jct Hwy 324
No. 377 From Jct Hwy 28 to Jct Hwy 6
No. 379 From McMahon to Jct Hwy 4
No. 381 From Manitoba Border to Jct Hwy 80
No. 397 From Jct Hwy 16 to Allan

MINISTER'S ORDER No: 80-2024-WI2-PILOT

ORDER for Increasing Weight Designation on Provincial Highway No. 80.

Pursuant to section 35.1 of *The Highways and Transportation Act, 1997*, the Minister hereby Orders: effective each year during the officially designated winter weight season for the Yorkton District effective until March 15, 2027; this Order authorizes any person, vehicle or class of vehicles to operate at the weights set for primary highways by *The Vehicle Weight and Dimension Regulations, 2010*, on Provincial Highway No. 80 from its junction with Provincial Highway No. 16 to its junction with Provincial Highway No. 10.

Outside of the designated winter weight season Provincial Highway No. 80 will revert back to a 8,000 kilogram restriction by Minister's Order signed July 6, 2001.

The 15 Kilometre Rule does not apply under the Order.

MINISTER'S ORDER No: 49-2024-WI3-PILOT

ORDER for Increasing Weight Designation on Provincial Highway No. 49.

Pursuant to section 35.1 of *The Highways and Transportation Act, 1997*, the Minister hereby Orders: effective beginning December 15, 2024 and ending March 15, 2025,

- beginning June 15 2025 and ending March 15, 2026,
- beginning June 15 2026 and ending March 15, 2027,
- beginning June 15 2027 and ending March 15, 2028,
- and beginning June 15 and ending March 15, 2029.

this Order authorizes any person, vehicle or class of vehicles to operate at the weights set for primary highways *The Vehicle Weight and Dimension Regulations, 2010*, on Provincial Highway No. 49 from its junction with Provincial Highway No. 8, near Pelly, eastward to the Saskatchewan/Manitoba provincial border.

The 15 Kilometre Rule does not apply under the Order.

The Winter Weight Season will be in effect for the following Rural Municipalities at 12:01 am Monday December 16, 2024. (RM's that have opted out of Winter Weights will not appear in the Order):

1 ARGYLE	17 VAL MARIE	40 BENGOUGH
2 MOUNT PLEASANT	18 LONE TREE	42 WILLOW BUNCH
3 ENNISKILLEN	19 FRONTIER	43 OLD POST
5 ESTEVAN	31 STORTHOAKS	44 WAVERLEY
6 CAMBRIA	32 RECIPROCITY	45 MANKOTA
7 SOURIS VALLEY	34 BROWNING	46 GLEN MCPHERSON
8 LAKE ALMA	35 BENSON	49 WHITE VALLEY
9 SURPRISE VALLEY	36 CYMRI	51 RENO
10 HAPPY VALLEY	37 LOMOND	61 ANTLER
11 HART BUTTE	38 LAURIER	63 MOOSE MOUNTAIN
12 POPLAR VALLEY	39 THE GAP	64 BROCK

WINTER WEIGHT SEASON 2024-2025

65	TECUMSEH	134	SHAMROCK	221	SARINA
66	GRIFFIN	135	LAWTONIA	222	CRAIK
67	WEYBURN	136	COULEE	223	HURON
68	BROKENSHELL	137	SWIFT CURRENT	224	MAPLE BUSH
69	NORTON	138	WEBB	225	CANAAN
70	KEY WEST	139	GULL LAKE	226	VICTORY
71	EXCEL	141	BIG STICK	228	LACADENA
72	LAKE OF THE RIVERS	142	ENTERPRISE	229	MIRY CREEK
73	STONEHENGE	151	ROCANVILLE	230	CLINTWORTH
74	WOOD RIVER	152	SPY HILL	231	HAPYPLAND
75	PINTO CREEK	153	WILLOWDALE	232	DEER FORKS
76	AUVERGNE	154	ELCAPO	241	CALDER
77	WISE CREEK	155	WOLSELEY	243	WALLACE
78	GRASSY CREEK	156	INDIAN HEAD	244	ORKNEY
79	ARLINGTON	157	SOUTH QU'APPELLE	245	GARRY
92	WALPOLE	158	EDENWOLD	246	ITUNA BON ACCORD
93	WAWKEN	159	SHERWOOD	247	KELLROSS
94	HAZELWOOD	160	PENSE	248	TOUCHWOOD
95	GOLDEN WEST	161	MOOSE JAW	250	LAST MOUNTAIN VALLEY
96	FILMORE	162	CARON	251	BIG ARM
97	WELLINGTON	163	WHEATLANDS	252	ARM RIVER
98	SCOTT	164	CHAPLIN	253	WILLNER
99	CALEDONIA	165	MORSE	254	LOREBURN
100	ELMSTHORPE	167	SASKATCHEWAN LANDING	255	COTEAU
101	TERRELL	168	RIVERSIDE	256	KING GEORGE
102	LAKE JOHNSTON	169	PITTEVILLE	257	MONET
103	SUTTON	171	FOX VALLEY	259	SNIPE LAKE
104	GRAVELBOURG	181	LANGENBURG	260	NEWCOMBE
105	GLEN BAIN	184	GRAYSON	261	CHESTERFIELD
106	WHISKA CREEK	185	MCLEOD	271	COTE
107	LAC PELLETIER	186	ABERNETHY	273	SLIDING HILLS
108	BONE CREEK	187	NORTH QU'APPELLE	274	GOOD LAKE
109	CARMICHAEL	189	LUMSDEN	275	INSINGER
121	MOOSOMIN	190	DUFFERIN	276	FOAM LAKE
122	MARTIN	191	MARQUIS	277	EMERALD
123	SILVERWOOD	193	EYEBROW	279	MOUNT HOPE
124	KINGSLEY	194	ENFIELD	280	WREFORD
125	CHESTER	211	CHURCHBRIDGE	281	WOOD CREEK
126	MONTMARTRE	213	SALTCOATS	282	MCCRANEY
127	FRANCIS	214	CANA	283	ROSEDALE
128	LAJORD	215	STANLEY	284	RUDY
129	BRATT'S LAKE	216	TULLYMET	285	FERTILE VALLEY
130	REDBURN	217	LIPTON	286	MILDEN
131	BAILDON	218	CUPAR	287	ST. ANDREWS
132	HILLSBOROUGH	219	LONGLAKETON	288	PLEASANT VALLEY
133	RODGERS	220	MCKILLOP	292	MILTON

WINTER WEIGHT SEASON 2024-2025

301	ST. PHILIPS	339	LEROY	381	GRASS LAKE
303	KEYS	340	WOLVERINE	382	EYE HILL
304	BUCHANAN	341	VISCOUNT	395	PORCUPINE
305	INVERMAY	342	COLONSAY	399	LAKE LENORE
307	ELFROS	343	BLUCHER	400	THREE LAKES
308	BIG QUILL	344	CORMAN PARK	401	HOODOO
309	PRAIRIE ROSE	345	VANSCOY	402	FISH CREEK
310	USBORNE	346	PERDUE	403	ROSTHERN
312	MORRIS	347	BIGGAR	404	LAIRD
313	LOST RIVER	349	GRANDVIEW	405	GREAT BEND
314	DUNDURN	350	MARIPOSA	406	MAYFIELD
315	MONTROSE	351	PROGRESS	409	BUFFALO
316	HARRIS	352	HEART'S HILL	410	ROUND VALLEY
317	MARRIOTT	366	KELVINGTON	411	SENLAC
318	MOUNTAIN VIEW	368	SPALDING	431	ST. LOUIS
319	WINSLOW	369	ST. PETER	434	BLAINE LAKE
320	OAKDALE	370	HUMBOLDT	435	REDBERRY
321	PRAIRIEDALE	371	BAYNE	436	DOUGLAS
322	ANTELOPE PARK	372	GRANT	437	NORTH BATTLEFORD
333	CLAYTON	373	ABERDEEN	438	BATTLE RIVER
334	PREECEVILLE	376	EAGLE CREEK	440	HILLSDALE
335	HAZEL DELL	377	GLENSIDE	468	MEOTA
336	SASMAN	378	ROSEMOUNT	470	PAYNTON
337	LAKEVIEW	379	REFORD	471	ELDON
338	LAKESIDE	380	TRAMPING LAKE		

Signed on behalf of the Minister this 13th day of December 2024.



Lana Eering
Government of Saskatchewan
Ministry of Highways
Manager, Highway Hotline/Emergency Planning Officer

WINTER WEIGHT SEASON 2024-2025

The Winter Weight Season **is in effect** for the following Provincial Highways:

- No. 2 From Weyakwin to La Ronge
- No. 2 From St. Louis to Weyakwin
- No. 3 From Manitoba Border to Kinistino
- No. 3 From Kinistino to Jct Hwy 4
- No. 3 Jct Hwy 4 to Jct Hwy 26
- No. 3 Jct Hwy 26 to Jct Hwy 17
- No. 4 From Glaslyn to Jct Hwy 224
- No. 6 From Naicam to Jct Hwy 55
- No. 9 From Jct Hwy 983 to Manitoba Border
- No. 11 From MacDowall to Prince Albert
- No. 12 From Blaine Lake to Shell Lake
- No. 20 From Jct Hwy 320 to Jct Hwy 3
- No. 21 From South Jct Hwy 303 to Meadow Lake Park
- No. 23 From Jct Hwy 9 to Somme
- No. 23 From Jct Hwy 38 to Jct Hwy 55
- No. 24 From Spiritwood to Chitek Lake
- No. 25 From Jct Hwy 3 to Jct Hwy 2
- No. 26 From Vawn to Goodsoil
- No. 35 From Jct Hwy 349 to Roads End
- No. 40 From Jct Hwy 3 to Blaine Lake
- No. 41 From Melfort to Jct Hwy 20
- No. 55 From Jct Hwy 9 to Smeaton
- No. 55 From Smeaton to Green Lake
- No. 55 From Green Lake to Alberta Border
- No. 102 From La Ronge to Southend
- No. 106 From Jct Hwy 55 to Creighton
- No. 120 From Jct Hwy Hwy 913- Jct Hwy 106
- No. 120 From Jct Hwy 913 to Jct Hwy 55
- No. 123 From Jct Hwy 55 to Cumberland House
- No. 135 From Jct Hwy 106 to Sandy Bay
- No. 155 From Green Lake to La Loche
- No. 165 From Jct Hwy 106 to North Jct Hwy 2
- No. 165 From South Jct Hwy 2 to 38 KM East of Jct Hwy 155
- No. 165 From 38 KM East of Jct Hwy 155 to Jct Hwy 155
- No. 167 From Sturgeon Weir River to Creighton
- No. 224 From Jct Hwy 4 to Jct Hwy 26
- No. 240 From Jct Hwy 55 to Prince Albert Ntl Park South Boundary* (Winter secondary weights)
- No. 255 From Jct Hwy 55 to Tobin Lake
- No. 263 From Jct Hwy 2 to Prince Albert Ntl Park Boundary
- No. 264 From Jct Hwy 2 to Prince Albert Ntl Park Boundary
- No. 265 From Jct Hwy 120 to Jct Hwy 926
- No. 302 From Prince Albert to 30 km W. of Prince Albert
- No. 303 From Jct Hwy 26 Turtleford to Jct Hwy 21
- No. 304 From Meadow Lake to Loon Lake
- No. 335 From Arborfield to Gronlid
- No. 355 From Meath Park to Sturgeon Lake Reserve
- No. 368 From St. Brieux to Beatty
- No. 378 From Jct Hwy 324 to Jct Hwy 3
- No. 903 From Jct Hwy 55 to 74 km North of Jct Hwy 965
- No. 904 From Jct Hwy 4 to 30.18 km north of Jct Hwy 4
- No. 905 From Jct Hwy 102 to Shasko Bay
* (Max GVW 41 500 kgs)
- No. 908 From Jct Hwy 155 to Ile-a-la-Crosse
- No. 909 From Jct Hwy 155 to Turnor Lake
- No. 910 From Jct Hwy 165 to Besnard Lake
- No. 911 From Jct Hwy 106 to Deschambault Lake
- No. 912 From Jct Hwy 913 to Wapawekka Lake
- No. 913 From Jct Hwy 106 to Jct Hwy 912
- No. 913 From Jct Hwy 912 to Jct Hwy 120
- No. 914 From Jct Hwy 165 to Key Lake Minesite
- No. 916 From Jct Hwy 2 to Jct Hwy 924
- No. 915 From Jct Hwy 102 to Stanley Mission
- No. 918 From Jct Hwy 165 to Patuanak
- No. 919 From Jct Hwy 21 to Primrose Lake* (Cold River Bridge - No winter weights on Bridge)
- No. 920 From Jct Hwy 106 to Jct Hwy 932
- No. 922 From Bodmin to Jct Hwy 916
- No. 924 From Jct Hwy 55 to Dore Lake
- No. 925 From Jct Hwy 155 to Michel
- No. 926 From Jct Hwy 120 to Jct Hwy 969
- No. 927 From Jct Hwy 912 to East Trout Lake
- No. 931 From Jct Hwy 926 to Jct Hwy 963
- No. 942 From Jct Hwy 55 to Roads End
- No. 943 From Jct Hwy 942 to Meetoos
- No. 945 From Jct Hwy 24 to Jct Hwy 943
- No. 946 From Jct Hwy 943 to Leoville Grid
- No. 950 From Jct Hwy 224 to Jct Hwy 21
- No. 951 From Jct Hwy 904 to Jct Hwy 903
- No. 953 From Jct Hwy 2 to Jct Hwy 263
- No. 955 From La Loche to Cluff Lake Mine * (Douglas River Bridge - Max GVW 41 500 kgs)
- No. 956 From Jct Hwy 155 to Alberta Border
- No. 965 From Jct Hwy 155 to Jct Hwy 903
- No. 969 From Jct Hwy 2 to Jct Hwy 165
- No. 980 From Woody Lake Rd. N. of Arran to Armit
- No. 982 From Forest Boundary to Jct Hwy 9
- No. 983 From Jct Hwy 982 to Jct Hwy 9

WINTER WEIGHT SEASON 2024-2025

The Winter Weight Season **is in effect** for the following Rural Municipalities. (RM's that have opted out of Winter Weights will not appear in the Order):

RM #	Name	RM #	Name	RM #	Name
331	LIVINGSTON	460	BIRCH HILLS	493	SHELLBROOK
394	HUDSON BAY	461	PRINCE ALBERT	494	CANWOOD
397	BARRIER VALLEY	463	DUCK LAKE	496	SPIRITWOOD
398	PLEASANTDALE	464	LEASK	497	MEDSTEAD
426	BJORKDALE	466	MEETING LAKE	498	PARKDALE
427	TISDALE	467	ROUND HILL	501	FRENCHMAN BUTTE
428	STAR CITY	469	TURTLE RIVER	520	PADDOCKWOOD
429	FLETT'S SPRINGS	486	MOOSE RANGE	521	DISTRICT OF LAKELAND
430	INVERGORDON	487	NIPAWIN	555	BIG RIVER
456	ARBORFIELD	488	TORCH RIVER	561	LOON LAKE
457	CONNAUGHT	490	GARDEN RIVER	588	MEADOW LAKE
459	KINISTINO	491	BUCKLAND	622	BEAVER RIVER

NOTE: VARIOUS PROVINCIAL HIGHWAYS AND BRIDGES ARE SUBJECT TO SPECIAL REDUCED OR RESTRICTED WEIGHTS AND SOME ARE FOR SPECIFIC PERIODS OF THE YEAR, SOME FOR PRECISE TEMPERATURES. A DETAILED DESCRIPTION OF THESE SPECIAL RESTRICTIONS IS LISTED ON THE FOLLOWING PAGES OF THIS ORDER.

WINTER WEIGHT SEASON 2024-2025

The following section is not part of the Order but is appended as **INFORMATION:**
Special Weight Restrictions on Selected Provincial Highways.

The following highways are subject to reduced weights, year round, by regulation in accordance with the *Vehicle Weight and Dimension Regulations, 2010*

Hwy	From	To	Description
955	South abutment of the Douglas River Bridge	Northern most limit of Highway 955	Maximum GVW 41 500 kg

The following BRIDGES are restricted by Minister's ORDER to a maximum gross vehicle weight of Secondary Weights year-round. Winter Weights are not allowed.

Hwy	Bridge Location Description
2	Bridge over Little Red River from Southern Bridge Abutment to Northern Bridge Abutment. Bridge is located approximately 4.4 km south of Jct. with Hwy 355 and Hwy 2 near Spruce Home. Bridge is located on East Frontage Road.
3	Bridge over Red Deer River from Eastern Bridge Abutment to Western Bridge Abutment located approximately .5km west of Erwood, Sk.
4 Metinota Access	Bridge over Jackfish Narrows from Eastern Bridge Abutment to Western Bridge Abutment. Bridge is located in access road approximately 3.1km west of the Jct. with Hwy 4. Bridge is located on access road.
312 Gabriel Dumont Bridge	Truss Bridge over South Saskatchewan River from Eastern Bridge Abutment to Western Bridge Abutment.
334	Bridge over Willow Creek from Eastern Bridge Abutment to Western Bridge Abutment. Bridge is located approximately 18.6 km east of Avonlea, sk. and the Jct. with Hwy 339 and Hwy 334.
919	Bridge over Martineau River from Southern Bridge Abutment to Northern Bridge Abutment. Bridge is located approximately 39.5km northwest of the Jct. with Hwy 21 and Hwy 950
935	Bridge over Morin River from the Southern Bridge Abutment to the Northern Bridge Abutment. Bridge is located approximately 7km north of the Jct. with Hwy 165 and Hwy 935.
955 Clearwater Truss Bridge	Truss Bridge over Clearwater River from Southern Bridge Abutment to Northern Bridge Abutment. Bridge is located approximately - 62 km north of Jct 155 and 955 to the Clearwater Bridge.
980 Elbow Lake Access	Bridge over Midnight Creek from Eastern Bridge Abutment to Western Bridge Abutment. Bridge is located approximately .3 km west of Elbow Lake, Sk.. The bridge is located on Spirit Lake/Elbow Lake access road.

The following BRIDGES are restricted by Minister's ORDER to a maximum gross vehicle weight of Primary Weights year-round. Winter Weights are not allowed.

Hwy	Bridge Location Description
2	Northbound Bridge over Hwy 1 from Southern Bridge Abutment to Northern Bridge Abutment. Bridge is located North of Moose Jaw at Jtc. with Hwy 1 and Hwy 2
2	Southbound Bridge over Hwy 1 from Southern Bridge Abutment to Northern Bridge Abutment. Bridge is located north of Moose Jaw Sk. at Jtc. with Hwy 1 and Hwy 2
6	Bridge over Barrier River Overflow from Southern Bridge Abutment to Northern Bridge Abutment. Bridge is located approximately 25.7 km south of Melfort, Sk.

WINTER WEIGHT SEASON 2024-2025

The following highways are restricted by Minister's ORDER to a maximum gross vehicle weight of 8 000 kilograms year round.

Highway	From	To
1 Caron Access	Jct Hwy 1	Hamlet of Caron
1 Grand Coulee Access	Jct Hwy 1	Village of Grand Coulee
2 Eastside Service Road near Prince Albert	Jct Boundary Street East Service Rd north	Jct Township Road (approx. 2.4 kms)
4 Blumenhof Access	Jct Hwy 4 east	Blumenhof
6 Leroy Access	Jct Hwy 6	Town of Leroy
8 Tantallon Access	Jct. Hwy 8	Village of Tantallon
12 Hepburn Access	Jct. Hwy 12	Village of Hepburn
12 Waldheim Access	Jct. Hwy 12	100 meters west of the west boundary of NW 15-42-5 W3M in the town of Waldheim.
13 Bellegarde Access	Jct. Hwy 13	Bellegarde
13 Forget Access	Jct. Hwy 13	The Village of Forget
15	Jct. Hwy 16	Jct. Hwy 9
16 Bradwell Access	Jct. Hwy 16	Village of Bradwell
21 Mendham Access	Jct Hwy 21 Mendham Access	Intersection with the North-South portion of the Municipal Alternate Truck Route
30	Eston Regional Park located at the southwest corner of Section 20, Township 23, Range 20, West 3rd Meridian	The jct. of municipal Hwy located at the north-east corner of Section 34, Township 28, Range 20, West 3rd Meridian
31	Jct. Hwy 4	Herschel Access Road
31	Grid 656 at NW corner of Section 34, Township 31, Range 17, west of the 3rd Meridian	The intersection of the Plenty grid at the NW corner, Section 21, Township 32, Range 19, west of the 3rd Meridian
39 Bienfait Access	Jct Hwy 39	Jct Hwy 18 (In the Town of Bienfait)
40 David Laird Campsite Road	Jct No. Hwy 40	Jct Hwy No. 16
41 Alvena Access	Jct Hwy 41	2nd Avenue in Village of Alvena
42	Jct Hwy 42 - Keeler Service Road/Railway Ave. S.	Keeler Service Road/Railway Ave. to RM Road 643
42 (1)	Jct Hwy 373	Jct Hwy 45 in the Town of Lucky Lake
42	From its Jct with Hwy 44 (km 43.68)	its Jct with Hwy 15 (km 59.92), for a total of 16.2 km.

WINTER WEIGHT SEASON 2024-2025

44(1)	Jct Hwy 19	Junction with the Danielson Provincial Park Access located in the southeast of Section 32, Township 26, Range 6, West of the 3rd Meridian.
44(1)	Jct Hwy 21	Westerly to the Jct with the municipal road located in the NE 1/4 of Section 24, Township 26, Range 27, west of the 3rd Meridian
44(1)	Jct with the municipal road located at the SW 1/4 of Section 26, Township 26, Range 27, west of the 3rd Meridian	Jct with the municipal road located east of Section 31, Township 26, Range 27, west of the 3rd Meridian
306	Riceton	Jct Hwy 6
308	Jct Hwy 8	Jct with Primary Grid 600
310	Jct of Grid 743	Jct of Hwy No. 16
312 Laird Access	Jct Hwy 312	The Village of Laird
332	7.1 km west of Jct Hwy 32	The Village of Hazlet except for that portion between the east and west Jct of Hwy 37
334	Jct Hwy 13	3.3 km south of Jct Hwy 339
339	Village of Avonlea	Jct. of Hwy 39 except for that portion from 11.4 km west of Avonlea to 21.2 km west of Avonlea
342	Jct Hwy 4	Jct of Primary Grid 647 north of Lacadena
371	Jct Hwy 21	Alberta Border

The following highways are restricted by Minister's ORDER to a maximum gross vehicle weight of 8 000 kilograms from March 1st to November 30th each year.

Hwy	From	To
302	Cecil Ferry Road at the SE corner of Section 22, Township 48, Range 24, west of the 2nd Meridian	Jct of the municipal road located at SE corner of Section 5, Township 49, Range 22, west of second Meridian (located by the Weldon Ferry)

The following access road is restricted by Minister's ORDER to a maximum gross vehicle weight of 8 000 kilograms from March 1st to November 30th each year.

Hwy	From	To
2 Paddockwood Access	Jct Hwy 2	Grid Road intersection NE Section 23, Township 52, Range 25, W2nd Meridian

The following highway is restricted by Minister's ORDER to a maximum gross vehicle weight of 8 000 kilograms from March 15th to November 15th each year and *when the ambient temperature is above -6°C.*

Hwy	From	To
8	0.5 km North of Junction Highway 49 at Norquay	The community of Swan Plain at the south boundary of SE 27-36-1-W2M

WINTER WEIGHT SEASON 2024-2025

The following Access Road is restricted by Minister's ORDER to a maximum gross vehicle weight of 8 000 kilograms from February 24 to November 15th each year and *when the ambient temperature is above -6°C*.

Hwy	From	To
35 Aylsham Access	Hwy 35 (NW corner of section 32, township 48, range 14, west of second Meridian)	Aylsham (NE corner of section 34, township 48, range 13, west of second Meridian)

The following highway is restricted by Minister's ORDER to a maximum gross vehicle weight of 75% of primary highway weights, except during winter weight season, when winter secondary weights shall apply.

Hwy	From	To
240	Junction Highway 55	No. 240 - From Jct Hwy 55 to Prince Albert National Park SPECIAL RESTRICTIONS – 4.5 kg per mm (252 lbs/in) width of tire (manufacturer's stamped dimension) on any wheel to a maximum GVW of 22,686 kg (50,000 lbs), including the steering axle.

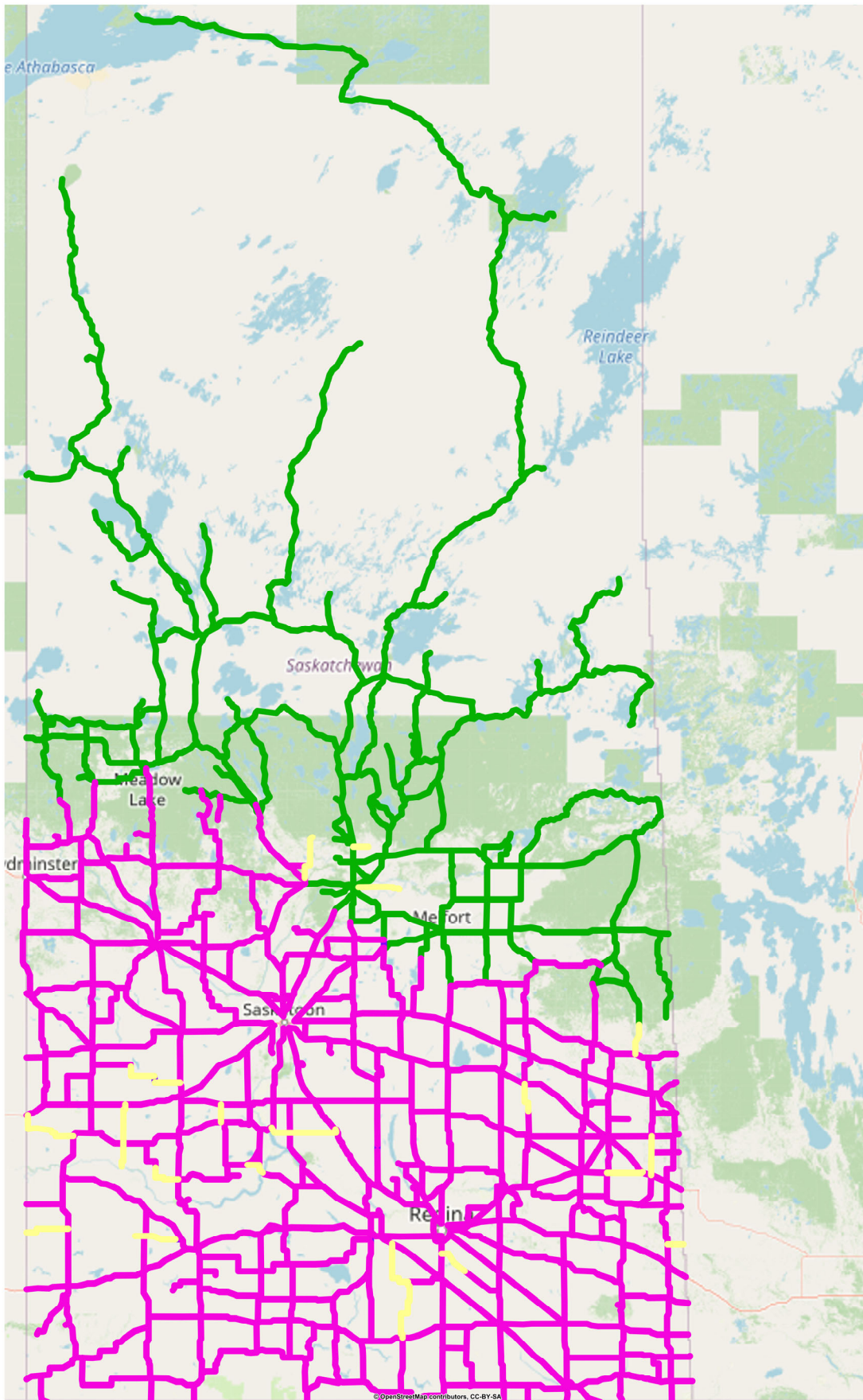
The following highway has a Temporary Road Closure by Minister's ORDER from December 15th to April 1st of the following year.

Hwy	From	To
271	Within the boundaries of Cypress Hills Provincial Park West Block	

For detailed information on Rural Roads, call the local rural municipality or for Provincial Highway information email the Highway Hotline hotline@gov.sk.ca. The rural municipality administers and maintains the alternate haul routes. They are also responsible for issuing any overweight permits associated with the alternate haul routes.

Saskatchewan Ministry of Highways and Infrastructure provides seasonal highway restriction information on the Internet at: <http://www.saskatchewan.ca/truckingweights> under Special Weights.

Truckers can also contact the Saskatchewan Ministry of Highways, Trucking inquiry line at Toll free in Saskatchewan: 1-866-933-5290 Out of Saskatchewan: 306-933-5290 email: mhitrucking@gov.sk.ca



Winter Weight Season

- █ In Effect
- █ Not In Effect
- █ Future Restrictions

Spring Weight Season

- █ No Restrictions
- █ Restricted
- █ Future Restrictions

Special Weight Restrictions

- █ Special Weight Restrictions

Notes
 Northern Region Winter Weights are in effect, Central and Southern Regions are in effect
 at 12:01 am December 16, 2024