

SPRING ROAD RESTRICTIONS

Eighth Order 2025

PMinister's Order Pursuant to section 35(1) of "The Highways and Transportation Act, 1997"

Pursuant to section 35(1) of "*The Highways and Transportation Act, 1997*" it is hereby ordered that, effective as stated in this Order, **at 12:01 am, Monday April 14, 2025** until further notice, vehicles other than those exempted in Part II, section 3 (2) and 3 (5) of "*The Vehicle Weight and Dimensions Regulations, 2010*", shall be restricted as follows:

Steering Axle

- 10.0 kg per mm (560 pounds per inch) width of tire (manufacturer's stamped dimension) to a maximum of
- 5,500 kg on the steering axle for a truck or truck tractor equipped with a single steering axle.
- 11,000 kg on the steering axle group for a truck or truck tractor equipped with a tandem axle steering group.

Other Axles

- 6.25 kg per mm (350 pounds per inch) width of tire (manufacturer's stamped dimension) to a maximum of:
- 1,650 kg (3,638 pounds) per tire, or
- 2,630 kg per tire for axles equipped with single tires with a width of 445 mm or greater.

This order does not permit the weight on any axle, axle group or vehicle from exceeding the maximum weight prescribed in the "*The Vehicle Weight and Dimension Regulations, 2010*" for that axle, axle group or vehicle.

The restriction does not apply to:

- Emergency vehicles,
- Ministry of Highways vehicles and municipal maintenance equipment when conducting maintenance or accessing sites on or along the restricted highway,
- SaskPower, SaskEnergy and SaskTel vehicles when accessing sites along the restricted route,
- Recreational vehicles,
- Buses,
- Farm Equipment operated or towed,
- Vehicles directly crossing a Provincial Highway at an intersecting public highway or private road.

Please note that some provincial highways and bridges are subject to special reduced or restricted weights and some are for specific periods of the year, some for precise temperatures. A detailed description of these special restrictions is listed on the last four pages of this Order.

The following Rural Municipalities will be removed from Spring Road Restrictions **immediately upon posting this Order.**

RM No.

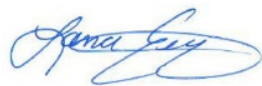
19	FRONTIER	137	SWIFT CURRENT
102	LAKE JOHNSTON	288	PLEASANT VALLEY
136	COULEE		

The following Rural Municipalities will be removed from Spring Road Restrictions **at 12:01 am, Monday April 14, 2025.**

RM No.

79	ARLINGTON	319	WINSLOW
105	GLEN BAIN	321	PRAIRIEDALE
165	MORSE	436	DOUGLAS
231	HAPPYLAND	459	KINISTINO
232	DEER FORKS		

Signed on behalf of the Minister on this 11th day of April 2025.



Lana Eering
Government of Saskatchewan
Ministry of Highways
Manager, Highway Hotline/Emergency Planning Officer

The following Provincial Highways **are** subject to SPECIAL Spring Road Restrictions.

Highway No. 55 - (old Hwy 55) From Jct Hwy 240 to 3 km West (Marchant Grove) **SPECIAL RESTRICTIONS** – 4.5 kg per mm (252 lbs/in) width of tire (manufacturer’s stamped dimension) on any wheel to a maximum GVW of 22,686 kg (50,000 lbs), including the steering axle.

Highway No. 240 - From Jct Hwy 55 to Prince Albert National Park **SPECIAL RESTRICTIONS** – 4.5 kg per mm (252 lbs/in) width of tire (manufacturer’s stamped dimension) on any wheel to a maximum GVW of 22,686 kg (50,000 lbs), including the steering axle.

The following Provincial Highways **are** subject to Spring Road Restrictions.

No. 2	From U.S. Border to St. Victor Access	No. 26	From 14 km North of Jct Hwy 304 to South Jct of 55 and 26 south of Peerless
No. 3	From Manitoba Border to Hudson Bay	No. 28	From Jct Hwy 18 to Jct Hwy 377
No. 4	From Jct Hwy 55 to Jct Hwy 224	No. 30	From Eston Regional Park to Brock (SPECIAL RESTRICTION – 8,000kgs)
No. 5	From Manitoba Border to Jct Hwy 57	No. 31	From Jct Hwy 4 to 23.1 km west (SPECIAL RESTRICTION – 8,000kgs)
No. 8	From Norquay to 14.6 km. South of Forest Boundary (SPECIAL RESTRICTIONS -8,000kgs from Midnight Mar. 14 to Midnight Nov. 15)	No. 31	From Herschel to grid 656
No. 9	From Hudson Bay to Ruby Lake Access	No. 31	From 29.6 km East of Plenty to Plenty (SPECIAL RESTRICTION – 8,000kgs)
No. 13	Cadillac to Junction 37	No. 34	From U.S. Border to Jct Hwy 13
No. 13	North Jct Hwy 21 to Alberta Border	No. 35	From Jct Hwy 48 to Jct Hwy 1
No. 15	From Jct Hwy 16 to Jct Hwy 9 (SPECIAL RESTRICTION – 8,000kgs)	No. 35	From 3.8 km North of Jct Hwy 1 to Jct Hwy 10
No. 15	From Jct Hwy 2 to 27.8 km West	No. 35	From Jct Hwy 306 to Jct Hwy 33
No. 15	From Farrerdale to Jct Hwy 11	No. 35	From Jct Hwy 33 to Jct Hwy 48
No. 18	From Ponteix Grid to Jct. 13 at Robsart	No. 35	From 3.8 km North of Jct Hwy 1 to Jct Hwy 10
No. 18	From Jct Hwy 2 to Ponteix Grid	No. 35	From White Fox to Roads End
	From West Jct Hwy 36 to Rockglen	No. 36	From U.S. Border to Jct Hwy 2
No. 18	From Jct Hwy 6 to East Jct Hwy 36	No. 37	U.S. Border to Climax
No. 18	From Jct Hwy 35 to Jct Hwy 6	No. 37	2.35 km North of Gull Lake to Cabri
No. 19	From East Jct Hwy 42 to Elbow Access	No. 42	From Riverhurst Ferry to Jct Hwy 373
No. 19	From Jct Hwy 18 to North Jct Hwy 363	No. 42	From Jct Hwy 373 to Lucky Lake (SPECIAL RESTRICTION – 8,000kgs)
No. 20	From Middle Lake to Jct Hwy 320	No. 42	From Lucky Lake to Jct Hwy 342
No. 20	From 1.6 km North of Pilger to Middle Lake	No. 42	From its Jct with Hwy 44 (km 43.68) to its Jct with Hwy 15 (km 59.92), for a total of 16.2 km. (SPECIAL RESTRICTION – 8,000kgs)
No. 20	From Jct Hwy 320 to Jct Hwy 3	No. 42	from the Jct of 367 to the Jct North Jct of 19.
No. 21	U.S. Border to West Jct Hwy 13	No. 42	From Jct Hwy 342 to Dinsmore
No. 21	East Jct Hwy 13 to Cypress Park Entrance	No. 43	From Jct Hwy 4 to Jct Hwy 19
No. 21	Jct Hwy 1 to 12 km South of Leader	No. 44	From Jct Hwy 19 to Danielson Provincial Park Access (SPECIAL RESTRICTION – 8,000kgs)
No. 22	From Manitoba Border to South Jct Hwy 8	No. 44	From Hwy 44 from 1.12km west of the junction of Hwy 219 to Hwy 45
No. 22	From Jct Hwy 9 to Jct Hwy 47	No. 44	From Dinsmore east to Macrorie
No. 22	From Jct Hwy 47 to East Jct grid 617		
No. 22	From Earl Grey to Jct Hwy 20		
No. 24	From 11 km North of Spiritwood to Leoville		
No. 24	From Leoville to Chitek Lake		
No. 25	From Jct Hwy 3 to Jct Hwy 2		

No. 44	South Jct Hwy 21 to 3.33 km West of Mantario (SPECIAL RESTRICTION – 8,000kgs)	No. 271	Maple Creek (Jct Hwy 21) to Fort Walsh
No. 44	3.33 kms West of Mantario to Alsask	No. 301	From Jct Hwy 1 from 200 metres north of the bridge to Buffalo Pound Park
No. 44	From 3 km south-west of Davidson (Meridian Road) to Jct. Hwy 19 (SPECIALRESTRICTION – 8,000kgs)	No. 302	From Weldon Ferry to 21 km East of Prince Albert (SPECIALRESTRICTION – 8,000kgs)
No. 44	From Dinsmore to Jct Hwy 4	No. 306	From Jct Hwy 35 to Riceton
No. 44	From 3.2 Km's West of Eston to N. Jct. of 21	No. 306	From Riceton to Jct Hwy 6 (SPECIAL RESTRICTION – 8,000kgs)
No. 44	From 400 Meters West of the North Jct Hwy 21 to the South Jct Hwy 21	No. 307	From Jct Hwy 7 to 13 km North of Jct Hwy 7
No. 45	From Birsay to Jct Hwy 15	No. 308	From Jct Hwy 8 to Grid 600 (SPECIAL RESTRICTION – 8,000kgs)
No. 45	From 8 kms South of Swanson to Delisle	No. 308	From Grid 600 to Manitoba Border
No. 47	From Handsworth Road to Jct Hwy 1	No. 310	From Jct Hwy 16 to Jct Hwy 5
No. 52	From Willowbrook to Homefield	No. 312	From Wakaw to Rosthern
No. 52	From Homefield to Jct Hwy 15	No. 317	From Jct 51 to 12 KM North
No. 55	(old Hwy 55) From Jct Hwy 55 to 3 km West (Marchant Grove)	No. 318	From 2 km N of Jct Hwy 18 to Jct Hwy 361
No. 58	From Jct Hwy 18 to Jct Hwy 13	No. 320	From Jct Hwy 20 to Domremy
No. 58	From N limits of Gravelbourg to Jct Hwy 1	No. 321	Liebenthal (Jct Hwy 21) to 7 km East of the Alberta Border
No. 80	From K-1 Mine Access to Churchbridge	No. 332	Jct Hwy 32 to 7.1 km West of Jct Hwy 32
No. 80	From North town limits of Churchbridge to Jct Hwy 10 (SPECIAL RESTRICTION – 8,000kgs)	No. 332	7.1 km West of Jct Hwy 32 to Hazlet (SPECIAL RESTRICTION – 8,000kgs)
No. 99	From Craven to Jct Hwy 6	No. 324	From Jct Hwy 378 to Mayfair
No. 102	From La Ronge Airport Access to 1.5 km N. of Nemeiben River Bridge	No. 334	From Jct Hwy 13 to 3.3 km south of Jct Hwy 339 (SEE SPECIAL RESTRICTION 8,000 Kgs)
No. 106	From Jct Hwy 928 to Creighton	No. 339	From Jct Hwy 334 to Jct Hwy 39 (SEE SPECIAL RESTRICTION 8,000 Kgs)
No. 123	From Jct Hwy 55 to E.B. Campbell Dam	No. 340	From Radisson to Hafford
No. 155	From 7.0 km North of Jct Hwy 165 to La Loche	No. 342	From Jct Hwy 42 to Jct Hwy 4
No. 167	From Sturgeon Weir River to Creighton	No. 342	From Jct Hwy 4 to Grid 647 (north of Lacadena) (SPECIAL RESTRICTION – 8,000kgs)
No. 167	From Denare Beach to Creighton	No. 343	Jct Hwy 4 to Simmie
No. 211	From Jct Hwy 11 to Blackstrap	No. 349	From Jct Hwy 35 to 15 km East of Naicam
No. 202	Jct Hwy 2 to Buffalo Pound Park	No. 350	From U.S. Border to Jct Hwy 18
No. 211	From Jct Hwy 11 to Blackstrap	No. 355	From Meath Park to Sturgeon Lake Reserve
No. 212	From Jct Hwy 11 to Fort Carlton Park	No. 357	From Togo to Jct Hwy 8
No. 220	From Jct Hwy 20 to Jct 322	No. 358	From Wood Mountain to Limerick
No. 221	Jct Hwy 21 to Cypress Hills Park Gate	No. 361	From Manitoba Border to Jct 9
No. 225	Hwy 225 from jct. of hwy 2 from Grid Road is spring road bans and from Grid to hwy 312.	No. 363	From 43 km West of Moose Jaw to Neidpath
No. 225	Hwy 225 from it's junction rural municipal road at the E of the NE7-44-27-W2 (east of St. Isidore-de-Bellevue) to the junction with the rural municipal road at the E. of the NE11-27-28-W2. (MO/3-969-2021-WI1) to is 9-month primary.	No. 363	Neidpath to Jct Hwy 4
No. 229	From Jct Hwy 9 to Jct Hwy 47	No. 364	From Km 19.08 to Km 36.45
No. 247	From Jct Hwy 9 to Jct Hwy 47	No. 365	From Manitou Beach to Plunkett
No. 255	From Jct Hwy 55 to Tobin Lake	No. 367	From Jct Hwy 42 to Jct Hwy 19
		No. 371	Jct Hwy 21 to Alberta Border (SPECIAL RESTRICTION – 8,000kgs)
		No. 373	From Jct Hwy 42 to Birsay
		No. 374	From Jct Hwy 14 to Tramping Lake

No. 376 From Asquith to Jct Hwy 40
 No. 377 From Jct Hwy 28 to Jct Hwy 6
 No. 378 From Jct Hwy 4 to Jct Hwy 324
 No. 378 From Jct Hwy 324 to Spiritwood

No. 379 McMahon to 14.66 km East of Junction No. 4
 No. 908 From Jct Hwy 155 to Ile-a-la-Crosse
 No. 953 From Jct Hwy 2 to Jct Hwy 263

The following Access Roads are subject to Spring Road Restrictions.

No. 1 Sintaluta Access
 No. 1 McLean Park Access
 No. 1 Grand Coulee Access (*SPECIAL RESTRICTION – 8,000kgs*)
 No. 1 North urban limits of Pense
 No. 1 Rush Lake Access
 No. 1 Waldeck Access
 No. 1 Webb Access from Km 0 to 1.87 Km
 No. 1 Tompkins Access
 No. 1 Piapot Access
 No. 2 Imperial Access
 No. 2 Simpson Access
 No. 2 Meacham Access
 No. 2 Dana Access
 No. 2 Wakaw Lake Park Access
 No. 2 Cudworth Access
 No. 2 Sun Valley Beach Access
 No. 2 Holdfast Access
 No. 2 Penzance Access
 No. 2 Liberty Access
 No. 2 Weyakwin Access
 No. 2 Ramsey Bay Access
 No. 2 Paddockwood Access (*SPECIAL RESTRICTION – 8,000kgs*)
 No. 3 Prairie River Access
 No. 3 Crooked River Access
 No. 3 Eldersley Access
 No. 3 Valparaiso Access
 No. 3 Weldon Access
 No. 3 Brancepeth Access
 No. 3 30 Metres N of the railway crossing at Birch Hills
 No. 3 Shell Lake Access
 No. 3 Medstead Access
 No. 3 Monte Nebo Access
 No. 3 Turtle Lake South Bay Access
 No. 4 Cando Access
 No. 4 Metinota Access

No. 4 Blumehof Access (*SPECIAL RESTRICTION – 8,000kgs*)
 No. 4 Rhineland Access
 No. 4 Aquadeo Access
 No. 4 Meadow Lake Airport – 220 meters West of Jct Hwy 4(Meadow Lake Urban Limits) to Meadow Lake Airport
 No. 5 Veregin Access
 No. 5 Mikado Access
 No. 5 Kuroki Access
 No. 5 From Leroy to 6.45 kms West
 No. 5 St. Gregor Access
 No. 5 Peterson Access
 No. 5 St. Denis Access
 No. 6 Lac Vert Access
 No. 6 Pleasantdale Access
 No. 6 Fairy Glen Access
 No. 8 Wroxton Access
 No. 8 Tantallon Access (*SPECIAL RESTRICTION – 8,000kgs*)
 No. 9 Dubuc Access
 No. 9 Crystal Lake Access
 No. 9 Ebenezer Access
 No. 9 Endeavour Access
 No. 9 Gorlitz Access
 No. 9 Tadmire Access
 No. 11 Kenaston bypass/alternate
 No. 11 Hanley Access
 No. 11 Dundurn Access
 No. 11 Gruenthal Access
 No. 11 Blumenthal Access
 No. 11 Neunlage Access
 No. 11 Bethune Access
 No. 11 Findlater Access
 No. 11 Findlater Service Road
 No. 11 Aylesbury Access
 No. 11 Craik Access
 No. 11 Girvin Access
 No. 11 Davidson South

No. 11	Macdowell Access	No. 22	Earl Grey Service Road
No. 12	Gruenfeldt Access	No. 23	Caragana Access
No. 12	Waldheim Access (<i>SPECIAL RESTRICTION – 8,000kgs</i>)	No. 23	Zenon Park Access
No. 13	Pangman Access	No. 23	Weekes Access
No. 13	Khediye Access	No. 25	Birch Hills Access
No. 13	Trossachs Access	No. 25	Hagen Access
No. 13	Bellegarde Access (<i>SPECIAL RESTRICTION – 8,000kgs</i>)	No. 27	Aberdeen Access
No. 13	Arcola Access	No. 31	Herschel Access
No. 13	Forget Access (<i>SPECIAL RESTRICTION – 8,000kgs</i>)	No. 33	Osage Access Road
No. 14	Senlac Access	No. 35	Wishart Access
No. 15	Service Road – All thin membrane surfaced roads from Fenwood to Leross	No. 35	Sylvania Access
No. 15	Punnichy Access	No. 35	Ridgedale Access
No. 15	Conquest Access	No. 35	Aylsham Access (<i>SPECIAL RESTRICTION – 8,000kgs</i>)
No. 15	Milden Access	No. 39	Mc Taggart Service Road
No. 15	Sovereign Access	No. 39	Wilcox Service Road
No. 15	Semans Access	No. 39	Roche Percee Access
No. 16	Jansen Access	No. 40	Speers Access
No. 16	Guernsey Access	No. 40	David Laird Campground Access (<i>YEAR ROUND RESTRICTION – 8,000kgs</i>)
No. 16	Plunkett Access	No. 40	Leask Access
No. 16	Viscount Access	No. 40	Marcelin Access
No. 16	Bradwell Access (<i>SPECIAL RESTRICTION – 8,000kgs</i>)	No. 41	Hwy 41 North to Aberdeen
No. 16	Dalmeny Access from Jct 16 to Jct 305	No. 43	Palmer Access
No. 18	Beaubier	No. 44	Plato Access
No. 18	Gladmar Access	No. 44	Glidden Access
No. 18	Big Beaver Access	No. 45	Coteau Beach Access
No. 18	McCord Access	No. 48	Fairlight Access
No. 19	Strongfield Access	No. 48	Kendal Service Road
No. 19	Hawarden Access	No. 48	Odessa Service Road
No. 19	Kincaid Access	No. 48	Vibank Service Road
No. 20	Middle Lake Access	No. 49	Hazel Dell Access
No. 20	St. Benedict Access	No. 49	Hyas Access
No. 20	Tway Access	No. 49	Stenen Access
No. 20	Duval Access	No. 51	Handel Access
No. 20	Bulyea Access	No. 51	Ruthilda Access
No. 21	Golden Prairie Access	No. 51	Major Access
No. 21	Mendham Access (<i>JCT 21 to 8.1 KM West</i>) (<i>SPECIAL RESTRICTION – 8,000kgs</i>)	No. 55	Love Access
No. 22	Atwater Access	No. 55	Garrick Access
No. 22	Grayson Access	No. 55	Choiceland Access
No. 22	Gerald Access	No. 55	Snowden Access
No. 22	Dysart Access	No. 80	Yarbo Access
		No. 123	Cumberland House Bridge to the Cumberland House Airport
		No. 155	Buffalo Narrows Airport
		No. 219	Glenside Access

No. 219 Riverside Estate Access
 No. 219 Furdale Access
 No. 312 Laird Access (*SPECIAL RESTRICTION – 8,000kgs*)
 No. 322 Kanata Valley Access

No. 322 Saskatchewan Beach Access
 No. 349 Saint-Front Access
 No. 363 Coderre Access
 No. 363 Shamrock Access
 No. 364 Edenwold Access

The following Rural Municipalities are subject to Spring Road Restrictions

6 CAMBRIA	123 SILVERWOOD	220 MCKILLOP
7 SOURIS VALLEY	124 KINGSLEY	223 HURON
8 LAKE ALMA	125 CHESTER	224 MAPLE BUSH
10 HAPPY VALLEY	126 MONTMARTRE	225 CANAAN
11 HART BUTTE	127 FRANCIS	226 VICTORY
12 POPLAR VALLEY	128 LAJORD	228 LACADENA
18 LONE TREE	129 BRATT'S LAKE	229 MIRY CREEK
38 LAURIER	130 REDBURN	230 CLINTWORTH
40 BENGOUGH	132 HILLSBOROUGH	241 CALDER
42 WILLOW BUNCH	133 RODGERS	243 WALLACE
43 OLD POST	134 SHAMROCK	244 ORKNEY
45 MANKOTA	135 LAWTONIA	245 GARRY
46 GLEN MCPHERSON	142 ENTERPRISE	246 ITUNA BON ACCORD
49 WHITE VALLEY	151 ROCANVILLE	248 TOUCHWOOD
51 RENO	153 WILLOWDALE	250 LAST MOUNTAIN VALLEY
64 BROCK	154 ELCAP	251 BIG ARM
65 TECUMSEH	155 WOLSELEY	255 COTEAU
67 WEYBURN	156 INDIAN HEAD	256 KING GEORGE
68 BROKENSHELL	157 SOUTH QU'APPELLE	260 NEWCOMBE
69 NORTON	158 EDENWOLD	271 COTE
70 KEY WEST	159 SHERWOOD	273 SLIDING HILLS
71 EXCEL	164 CHAPLIN	274 GOOD LAKE
72 LAKE OF THE RIVERS	166 EXCELSIOR	275 INSINGER
73 STONEHENGE	181 LANGENBURG	276 FOAM LAKE
77 WISE CREEK	184 GRAYSON	277 EMERALD
94 HAZELWOOD	187 NORTH QU'APPELLE	279 MOUNT HOPE
95 GOLDEN WEST	189 LUMSDEN	280 WREFORD
96 FILLMORE	190 DUFFERIN	281 WOOD CREEK
97 WELLINGTON	191 MARQUIS	282 MCCRANEY
101 TERRELL	193 EYEBROW	283 ROSEDALE
103 SUTTON	194 ENFIELD	284 RUDY
104 GRAVELBOURG	214 CANA	285 FERTILE VALLEY
106 WHISKA CREEK	215 STANLEY	301 ST. PHILIPS
108 BONE CREEK	216 TULLYMET	303 KEYS
110 PIAPOT	217 LIPTON	304 BUCHANAN
121 MOOSOMIN	218 CUPAR	307 ELFROS
122 MARTIN	219 LONGLAKETON	309 PRAIRIE ROSE

310	USBORNE	371	BAYNE	460	BIRCH HILLS
312	MORRIS	372	GRANT	461	PRINCE ALBERT
313	LOST RIVER	373	ABERDEEN	463	DUCK LAKE
314	DUNDURN	376	EAGLE CREEK	464	LEASK
315	MONTROSE	377	GLENSIDE	466	MEETING LAKE
316	HARRIS	378	ROSEMOUNT	467	ROUND HILL
317	MARRIOTT	379	REFORD	468	MEOTA
320	OAKDALE	380	TRAMPING LAKE	470	PAYNTON
331	LIVINGSTON	381	GRASS LAKE	486	MOOSE RANGE
333	CLAYTON	382	EYE HILL	487	NIPAWIN
334	PREECEVILLE	394	HUDSON BAY	488	TORCH RIVER
335	HAZEL DELL	395	PORCUPINE	490	GARDEN RIVER
336	SASMAN	398	PLEASANTDALE	491	BUCKLAND
338	LAKESIDE	399	LAKE LENORE	493	SHELLBROOK
339	LEROY	400	THREE LAKES	494	CANWOOD
340	WOLVERINE	401	HOODOO	496	SPIRITWOOD
341	VISCOUNT	402	FISH CREEK	497	MEDSTEAD
343	BLUCHER	403	ROSTHERN	498	PARKDALE
344	CORMAN PARK	405	GREAT BEND	499	MERVIN
345	VANSCOY	406	MAYFIELD	501	FRENCHMAN BUTTE
346	PERDUE	409	BUFFALO	520	PADDOCKWOOD
347	BIGGAR	410	ROUND VALLEY	521	DISTRICT OF LAKELAND
349	GRANDVIEW	411	SENLAC	555	BIG RIVER
350	MARIPOSA	427	TISDALE	561	LOON LAKE
351	PROGRESS	428	STAR CITY	588	MEADOW LAKE
352	HEART'S HILL	431	ST. LOUIS	622	BEAVER RIVER
366	KELVINGTON	437	NORTH BATTLEFORD		
368	SPALDING	438	BATTLE RIVER		
369	ST. PETER	440	HILLSDALE		
370	HUMBOLDT	457	CONNAUGHT		

**The following section is not part of the Order but is appended as INFORMATION:
Special Weight Restrictions on Selected Provincial Highways.**

The following highways are subject to reduced weights, year round, by regulation in accordance with the *Vehicle Weight and Dimension Regulations, 2010*

Hwy	From	To	Description
955	South abutment of the Douglas River Bridge	Northern most limit of Highway 955	Maximum GVW 41 500 kg

The following BRIDGES are restricted by Minister's ORDER to a maximum gross vehicle weight of Secondary Weights year-round. Winter Weights are not allowed.

Hwy	Bridge Location Description
2	Bridge over Little Red River from Southern Bridge Abutment to Northern Bridge Abutment. Bridge is located approximately 4.4 km south of Jct. with Hwy 355 and Hwy 2 near Spruce Home. Bridge is located on East Frontage Road.
3	Bridge over Red Deer River from Eastern Bridge Abutment to Western Bridge Abutment located approximately .5km west of Erwood, Sk.
4 Metinota Access	Bridge over Jackfish Narrows from Eastern Bridge Abutment to Western Bridge Abutment. Bridge is located in access road approximately 3.1km west of the Jct. with Hwy 4. Bridge is located on access road.
312 Gabriel Dumont Bridge	Truss Bridge over South Saskatchewan River from Eastern Bridge Abutment to Western Bridge Abutment.
334	Bridge over Willow Creek from Eastern Bridge Abutment to Western Bridge Abutment. Bridge is located approximately 18.6 km east of Avonlea, sk. and the Jct. with Hwy 339 and Hwy 334.
919	Bridge over Martineau River from Southern Bridge Abutment to Northern Bridge Abutment. Bridge is located approximately 39.5km northwest of the Jct. with Hwy 21 and Hwy 950
935	Bridge over Morin River from the Southern Bridge Abutment to the Northern Bridge Abutment. Bridge is located approximately 7km north of the Jct. with Hwy 165 and Hwy 935.
955 Clearwater Truss Bridge	Truss Bridge over Clearwater River from Southern Bridge Abutment to Northern Bridge Abutment. Bridge is located approximately - 62 km north of Jct 155 and 955 to the Clearwater Bridge.
980 Elbow Lake Access	Bridge over Midnight Creek from Eastern Bridge Abutment to Western Bridge Abutment. Bridge is located approximately .3 km west of Elbow Lake, Sk.. The bridge is located on Spirit Lake/Elbow Lake access road.

The following BRIDGES are restricted by Minister's ORDER to a maximum gross vehicle weight of Primary Weights year-round. Winter Weights are not allowed.

Hwy	Bridge Location Description
2	Northbound Bridge over Hwy 1 from Southern Bridge Abutment to Northern Bridge Abutment. Bridge is located North of Moose Jaw at Jtc. with Hwy 1 and Hwy 2
2	Southbound Bridge over Hwy 1 from Southern Bridge Abutment to Northern Bridge Abutment. Bridge is located north of Moose Jaw Sk. at Jtc. with Hwy 1 and Hwy 2
6	Bridge over Barrier River Overflow from Southern Bridge Abutment to Northern Bridge Abutment. Bridge is located approximately 25.7 km south of Melfort, Sk.

The following highways are restricted by Minister's ORDER to a maximum gross vehicle weight of 8 000 kilograms year round.

Highway	From	To
1 Caron Access	Jct Hwy 1	Hamlet of Caron
1 Grand Coulee Access	Jct Hwy 1	Village of Grand Coulee
2 Eastside Service Road near Prince Albert	Jct Boundary Street East Service Rd north	Jct Township Road (approx. 2.4 kms)
4 Blumenhof Access	Jct Hwy 4 east	Blumenhof
6 Leroy Access	Jct Hwy 6	Town of Leroy
8 Tantallon Access	Jct. Hwy 8	Village of Tantallon
12 Hepburn Access	Jct. Hwy 12	Village of Hepburn
12 Waldheim Access	Jct. Hwy 12	100 meters west of the west boundary of NW 15-42-5 W3M in the town of Waldheim.
13 Bellegarde Access	Jct. Hwy 13	Bellegarde
13 Forget Access	Jct. Hwy 13	The Village of Forget
15	Jct. Hwy 16	Jct. Hwy 9
16 Bradwell Access	Jct. Hwy 16	Village of Bradwell
21 Mendham Access	Jct Hwy 21 Mendham Access	Intersection with the North-South portion of the Municipal Alternate Truck Route
30	Eston Regional Park located at the southwest corner of Section 20, Township 23, Range 20, West 3rd Meridian	The jct. of municipal Hwy located at the north-east corner of Section 34, Township 28, Range 20, West 3rd Meridian
31	Jct. Hwy 4	Herschel Access Road
31	Grid 656 at NW corner of Section 34, Township 31, Range 17, west of the 3rd Meridian	The intersection of the Plenty grid at the NW corner, Section 21, Township 32, Range 19, west of the 3rd Meridian
39 Bienfait Access	Jct Hwy 39	Jct Hwy 18 (In the Town of Bienfait)
40 David Laird Campsite Road	Jct No. Hwy 40	Jct Hwy No. 16
41 Alvena Access	Jct Hwy 41	2nd Avenue in Village of Alvena
42	Jct Hwy 42 - Keeler Service Road/Railway Ave. S.	Keeler Service Road/Railway Ave. to RM Road 643
42 (1)	Jct Hwy 373	Jct Hwy 45 in the Town of Lucky Lake

42	From its Jct with Hwy 44 (km 43.68)	its Jct with Hwy 15 (km 59.92), for a total of 16.2 km.
44(1)	<i>Jct Hwy 19</i>	<i>Junction with the Danielson Provincial Park Access located in the southeast of Section 32, Township 26, Range 6, West of the 3rd Meridian.</i>
44(1)	<i>Jct Hwy 21</i>	<i>Westerly to the Jct with the municipal road located in the NE 1/4 of Section 24, Township 26, Range 27, west of the 3rd Meridian</i>
44(1)	<i>Jct with the municipal road located at the SW 1/4 of Section 26, Township 26, Range 27, west of the 3rd Meridian</i>	<i>Jct with the municipal road located east of Section 31, Township 26, Range 27, west of the 3rd Meridian</i>
306	Riceton	Jct Hwy 6
308	Jct Hwy 8	Jct with Primary Grid 600
310	Jct of Grid 743	Jct of Hwy No. 16
312 Laird Access	Jct Hwy 312	The Village of Laird
332	7.1 km west of Jct Hwy 32	The Village of Hazlet except for that portion between the east and west Jct of Hwy 37
334	Jct Hwy 13	3.3 km south of Jct Hwy 339
339	Village of Avonlea	Jct. of Hwy 39 except for that portion from 11.4 km west of Avonlea to 21.2 km west of Avonlea
342	Jct Hwy 4	Jct of Primary Grid 647 north of Lacadena
371	Jct Hwy 21	Alberta Border

The following highways are restricted by Minister's ORDER to a maximum gross vehicle weight of 8 000 kilograms from March 1st to November 30th each year.

Hwy	From	To
302	Cecil Ferry Road at the SE corner of Section 22, Township 48, Range 24, west of the 2nd Meridian	Jct of the municipal road located at SE corner of Section 5, Township 49, Range 22, west of second Meridian (located by the Weldon Ferry)

The following access road is restricted by Minister's ORDER to a maximum gross vehicle weight of 8 000 kilograms from March 1st to November 30th each year.

Hwy	From	To
2 Paddockwood Access	Jct Hwy 2	Grid Road intersection NE Section 23, Township 52, Range 25, W2nd Meridian

The following highway is restricted by Minister's ORDER to a maximum gross vehicle weight of 8 000 kilograms from March 15th to November 15th each year and *when the ambient temperature is above -6°C*.

Hwy	From	To
8	0.5 km North of Junction Highway 49 at Norquay	The community of Swan Plain at the south boundary of SE 27-36-1-W2M

The following Access Road is restricted by Minister's ORDER to a maximum gross vehicle weight of 8 000 kilograms from February 24 to November 15th each year and *when the ambient temperature is above -6°C*.

Hwy	From	To
35 Aylsham Access	Hwy 35 (NW corner of section 32, township 48, range 14, west of second Meridian)	Aylsham (NE corner of section 34, township 48, range 13, west of second Meridian)

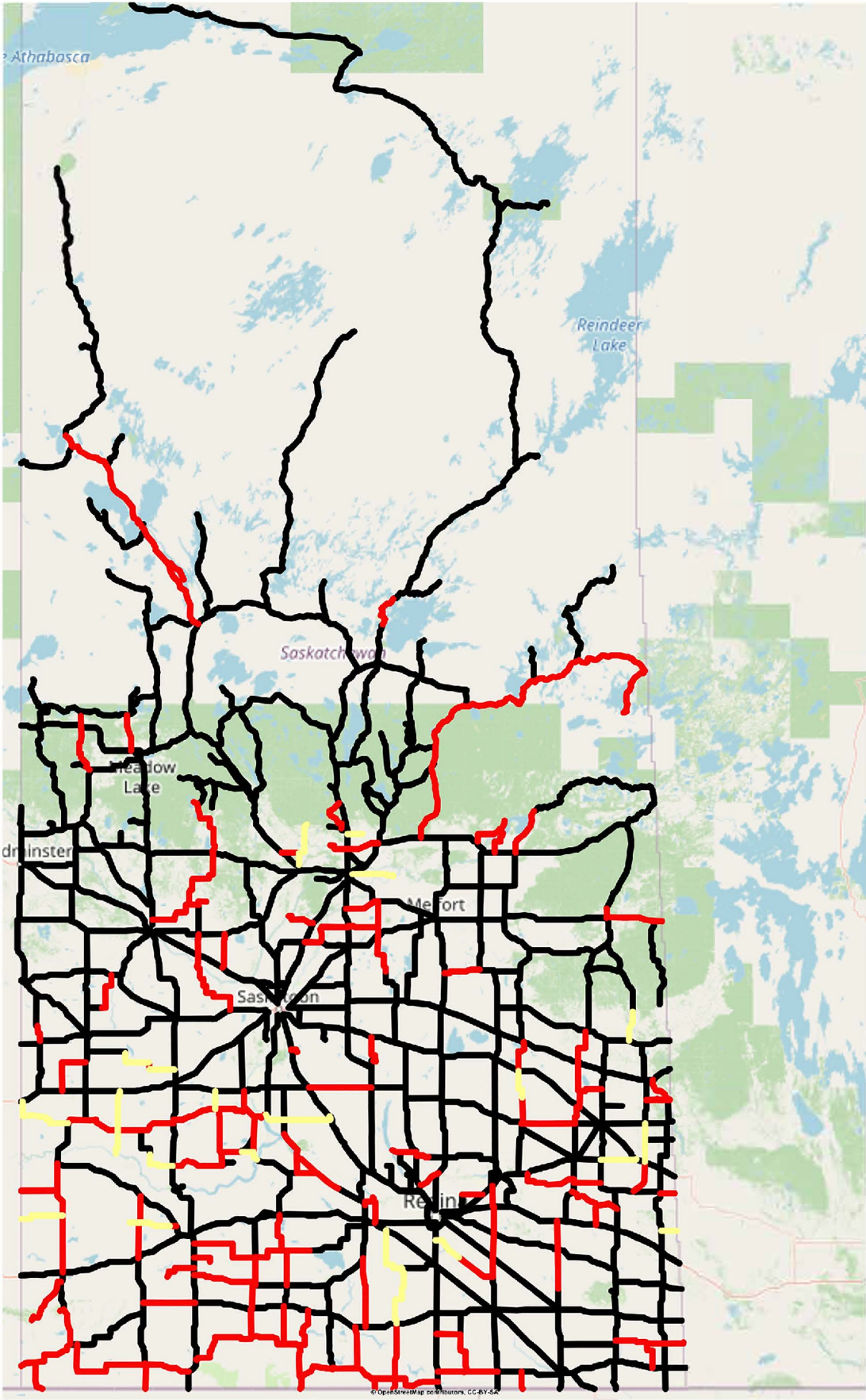
The following highway is restricted by Minister's ORDER to a maximum gross vehicle weight of 75% of primary highway weights, except during winter weight season, when winter secondary weights shall apply.

Hwy	From	To
240	Junction Highway 55	No. 240 - From Jct Hwy 55 to Prince Albert National Park SPECIAL RESTRICTIONS – 4.5 kg per mm (252 lbs/in) width of tire (manufacturer's stamped dimension) on any wheel to a maximum GVW of 22,686 kg (50,000 lbs), including the steering axle.




For detailed information on Rural Roads, call the local rural municipality or for Provincial Highway information email the Highway Hotline hotline@gov.sk.ca. The rural municipality administers and maintains the alternate haul routes. They are also responsible for issuing any overweight permits associated with the alternate haul routes.

Saskatchewan Ministry of Highways and Infrastructure provides seasonal highway restriction information on the Internet at: <http://www.saskatchewan.ca/truckingweights> under Special Weights.

Truckers can also contact the Saskatchewan Ministry of Highways, Trucking inquiry line at Toll free in Saskatchewan: 1-866-933-5290 Out of Saskatchewan: 306-933-5290 email: mhitrucking@gov.sk.ca



Winter Weight Season

-  In Effect
-  Not In Effect
-  Future Restrictions

Spring Weight Season

-  No Restrictions
-  Restricted
-  Future Restrictions

Special Weight Restrictions

-  Special Weight Restrictions

Notes