

Minister's Order Pursuant to section 35(1) of "The Highways and Transportation Act, 1997"

Pursuant to section 35(1) of "The Highways and Transportation Act, 1997" it is hereby ordered that, effective as stated in this Order, **at 12:01 am, Friday April 4, 2025** until further notice, vehicles other than those exempted in Part II, section 3 (2) and 3 (5) of "The Vehicle Weight and Dimensions Regulations, 2010", shall be restricted as follows:

Steering Axle

- 10.0 kg per mm (560 pounds per inch) width of tire (manufacturer's stamped dimension) to a maximum of
- 5,500 kg on the steering axle for a truck or truck tractor equipped with a single steering axle.
- 11,000 kg on the steering axle group for a truck or truck tractor equipped with a tandem axle steering group.

Other Axles

- 6.25 kg per mm (350 pounds per inch) width of tire (manufacturer's stamped dimension) to a maximum of:
- 1,650 kg (3,638 pounds) per tire, or
- 2,630 kg per tire for axles equipped with single tires with a width of 445 mm or greater.

This order does not permit the weight on any axle, axle group or vehicle from exceeding the maximum weight prescribed in the "The Vehicle Weight and Dimension Regulations, 2010" for that axle, axle group or vehicle.

The restriction does not apply to:

- Emergency vehicles,
- Ministry of Highways vehicles and municipal maintenance equipment when conducting maintenance or accessing sites on or along the restricted highway,
- SaskPower, SaskEnergy and SaskTel vehicles when accessing sites along the restricted route,
- Recreational vehicles,
- Buses,
- Farm Equipment operated or towed,
- Vehicles directly crossing a Provincial Highway at an intersecting public highway or private road.

Please note that some provincial highways and bridges are subject to special reduced or restricted weights and some are for specific periods of the year, some for precise temperatures. A detailed description of these special restrictions is listed on the last four pages of this Order.

The following Rural Municipalities **will be removed** from Spring Road Restrictions **immediately upon post this Order.**

RM No.

161 MOOSE JAW
169 PITTEVILLE
185 MCLEOD

The following Rural Municipalities **will be removed** from Spring Road Restrictions **at 12:01 am, Friday April 4, 2025.**

RM No.

320 Oakdale

The following Provincial Highways **will be** subject to Spring Road Restrictions **at 12:01 am, Friday April 4, 2025.**

No. 3	From Manitoba Border to Hudson Bay	No. 106	From Jct Hwy 928 to Creighton
No. 4	From Jct Hwy 55 to Jct Hwy 224	No. 123	From Jct Hwy 55 to E.B. Campbell Dam
No. 9	From Hudson Bay to Ruby Lake Access	No. 155	From 7.0 km North of Jct Hwy 165 to La Loche
No. 20	From Jct Hwy 320 to Jct Hwy 3	No. 167	From Sturgeon Weir River to Creighton
No. 24	From 11 km North of Spiritwood to Leoville	No. 167	From Denare Beach to Creighton
No. 24	From Leoville to Chitek Lake	No. 255	From Jct Hwy 55 to Tobin Lake
No. 25	From Jct Hwy 3 to Jct Hwy 2	No. 302	From Weldon Ferry to 21 km East of Prince Albert (SPECIALRESTRICTION – 8,000kgs)
No. 26	From 14 km North of Jct Hwy 304 to South Jct of 55 and 26 south of Peerless	No. 355	From Meath Park to Sturgeon Lake Reserve
No. 35	From White Fox to Roads End	No. 378	From Jct Hwy 324 to Spiritwood
No. 55	(old Hwy 55) From Jct Hwy 55 to 3 km West (Marchant Grove)	No. 908	From Jct Hwy 155 to Ile-a-la-Crosse
No. 102	From La Ronge Airport Access to 1.5 km N. of Nemeiben River Bridge	No. 953	From Jct Hwy 2 to Jct Hwy 263

SPECIAL RESTRICTIONS

Highway No. 55 - (old Hwy 55) From Jct Hwy 240 to 3 km West (Marchant Grove) **SPECIAL RESTRICTIONS** – 4.5 kg per mm (252 lbs/in) width of tire (manufacturer’s stamped dimension) on any wheel to a maximum GVW of 22,686 kg (50,000 lbs), including the steering axle.

Highway No. 240 - From Jct Hwy 55 to Prince Albert National Park **SPECIAL RESTRICTIONS** – 4.5 kg per mm (252 lbs/in) width of tire (manufacturer’s stamped dimension) on any wheel to a maximum GVW of 22,686 kg (50,000 lbs), including the steering axle.

The following Access Roads **will be** subject to Spring Road Restrictions **at 12:01 am, Friday April 4, 2025.**

No. 2	Weyakwin Access	No. 3	Weldon Access
No. 2	Ramsey Bay Access	No. 3	Brancepeth Access
No. 2	Paddockwood Access (SPECIAL RESTRICTION – 8,000kgs)	No. 3	30 Metres N of the railway crossing at Birch Hills
No. 3	Prairie River Access	No. 3	Shell Lake Access
No. 3	Crooked River Access	No. 3	Medstead Access
No. 3	Eldersley Access	No. 3	Monte Nebo Access
No. 3	Valparaiso Access	No. 3	Turtle Lake South Bay Access

No. 4	Meadow Lake Airport – 220 meters West of Jct Hwy 4(Meadow Lake Urban Limits) to Meadow Lake Airport	No. 35	Ridgedale Access
No. 6	Lac Vert Accessc	No. 35	Aylsham Access (<i>SPECIAL RESTRICTION – 8,000kgs</i>)
No. 6	Pleasantdale Access	No. 40	Leask Access
No. 6	Fairy Glen Access	No. 40	Marcelin Access
No. 11	Macdowell Access	No. 55	Love Access
No. 23	Zenon Park Access	No. 55	Garrick Access
No. 23	Weekes Access	No. 55	Choceland Access
No. 25	Birch Hills Access	No. 55	Snowden Access
No. 25	Hagen Access	No. 123	Cumberland House Bridge to the Cumberland House Airport
No. 35	Sylvania Access	No. 155	Buffalo Narrows Airport

The following Rural Municipalities **will be** subject to Spring Road Restrictions at **12:01 am, Friday April 4, 2025.**

331	LIVINGSTON	466	MEETING LAKE	498	PARKDALE
394	HUDSON BAY	467	ROUND HILL	499	MERVIN
398	PLEASANTDALE	486	MOOSE RANGE	501	FRENCHMAN BUTTE
427	TISDALE	487	NIPAWIN	520	PADDOCKWOOD
428	STAR CITY	488	TORCH RIVER	521	DISTRICT OF LAKELAND
457	CONNAUGHT	490	GARDEN RIVER	555	BIG RIVER
459	KINISTINO	491	BUCKLAND	561	LOON LAKE
460	BIRCH HILLS	493	SHELLBROOK	588	MEADOW LAKE
461	PRINCE ALBERT	494	CANWOOD	622	BEAVER RIVER
463	DUCK LAKE	496	SPIRITWOOD		
464	LEASK	497	MEDSTEAD		

Signed on behalf of the Minister on this 1st day of April 2025.

Lana Eering
Government of Saskatchewan
Ministry of Highways
Manager, Highway Hotline/Emergency Planning Officer

The following Provincial Highways are subject to Spring Road Restrictions.

No. 2	From U.S. Border to St. Victor Access	No. 42	From Jct Hwy 373 to Lucky Lake (<i>SPECIAL RESTRICTION – 8,000kgs</i>)
No. 5	From Manitoba Border to Jct Hwy 57	No. 42	From Lucky Lake to Jct Hwy 342
No. 8	From Norquay to 14.6 km. South of Forest Boundary (<i>SPECIAL RESTRICTIONS -8,000kgs from Midnight Mar. 14 to Midnight Nov. 15</i>)	No. 42	From its Jct with Hwy 44 (km 43.68) to its Jct with Hwy 15 (km 59.92), for a total of 16.2 km. (<i>SPECIAL RESTRICTION – 8,000kgs</i>)
No. 13	Cadillac to Junction 37	No. 42	from the Jct of 367 to the Jct North Jct of 19.
No. 13	North Jct Hwy 21 to Alberta Border	No. 42	From Jct Hwy 342 to Dinsmore
No. 15	From Jct Hwy 16 to Jct Hwy 9 (<i>SPECIAL RESTRICTION – 8,000kgs</i>)	No. 43	From Jct Hwy 4 to Jct Hwy 19
No. 15	From Jct Hwy 2 to 27.8 km West	No. 44	From Jct Hwy 19 to Danielson Provincial Park Access (<i>SPECIAL RESTRICTION – 8,000kgs</i>)
No. 15	From Farrerdale to Jct Hwy 11	No. 44	From Hwy 44 from 1.12km west of the junction of Hwy 219 to Hwy 45
No. 18	From Ponteix Grid to Jct. 13 at Robsart	No. 44	From Dinsmore east to Macrorie
No. 18	From Jct Hwy 2 to Ponteix Grid	No. 44	South Jct Hwy 21 to 3.33 km West of Mantario (<i>SPECIAL RESTRICTION – 8,000kgs</i>)
	From West Jct Hwy 36 to Rockglen	No. 44	3.33 kms West of Mantario to Alsask
No. 18	From Jct Hwy 6 to East Jct Hwy 36	No. 44	From 3 km south-west of Davidson (Meridian Road) to Jct. Hwy 19 (<i>SPECIAL RESTRICTION – 8,000kgs</i>)
No. 18	From Jct Hwy 35 to Jct Hwy 6	No. 44	From Dinsmore to Jct Hwy 4
No. 19	From East Jct Hwy 42 to Elbow Access	No. 44	From 3.2 Km's West of Eston to N. Jct. of 21
No. 19	From Jct Hwy 18 to North Jct Hwy 363	No. 44	From 400 Meters West of the North Jct Hwy 21 to the South Jct Hwy 21
No. 20	From Middle Lake to Jct Hwy 320	No. 45	From Birsay to Jct Hwy 15
No. 20	From 1.6 km North of Pilger to Middle Lake	No. 45	From 8 kms South of Swanson to Delisle
No. 21	U.S. Border to West Jct Hwy 13	No. 47	From Handsworth Road to Jct Hwy 1
No. 21	East Jct Hwy 13 to Cypress Park Entrance	No. 52	From Willowbrook to Homefield
No. 21	Jct Hwy 1 to 12 km South of Leader	No. 52	From Homefield to Jct Hwy 15
No. 22	From Manitoba Border to South Jct Hwy 8	No. 58	From Jct Hwy 18 to Jct Hwy 13
No. 22	From Jct Hwy 9 to Jct Hwy 47	No. 58	From N limits of Gravelbourg to Jct Hwy 1
No. 22	From Jct Hwy 47 to East Jct grid 617	No. 80	From K-1 Mine Access to Churchbridge
No. 22	From Earl Grey to Jct Hwy 20	No. 80	From North town limits of Churchbridge to Jct Hwy 10 (<i>SPECIAL RESTRICTION – 8,000kgs</i>)
No. 28	From Jct Hwy 18 to Jct Hwy 377	No. 99	From Craven to Jct Hwy 6
No. 30	From Eston Regional Park to Brock (<i>SPECIAL RESTRICTION – 8,000kgs</i>)	No. 211	From Jct Hwy 11 to Blackstrap
No. 31	From Jct Hwy 4 to 23.1 km west (<i>SPECIAL RESTRICTION – 8,000kgs</i>)	No. 202	Jct Hwy 2 to Buffalo Pound Park
No. 31	From Herschel to grid 656	No. 211	From Jct Hwy 11 to Blackstrap
No. 31	From 29.6 km East of Plenty to Plenty (<i>SPECIAL RESTRICTION – 8,000kgs</i>)	No. 212	From Jct Hwy 11 to Fort Carlton Park
No. 34	From U.S. Border to Jct Hwy 13	No. 220	From Jct Hwy 20 to Jct 322
No. 35	From Jct Hwy 48 to Jct Hwy 1	No. 221	Jct Hwy 21 to Cypress Hills Park Gate
No. 35	From 3.8 km North of Jct Hwy 1 to Jct Hwy 10	No. 225	Hwy 225 from jct. of hwy 2 from Grid Road is spring road bans and from Grid to hwy 312.
No. 35	From Jct Hwy 306 to Jct Hwy 33	No. 225	Hwy 225 from it's junction rural municipal road at the E of the NE7-44-27-W2 (east of St. Isidore-de-Bellevue) to the junction with the rural municipal road at the E. of the NE11-27-
No. 35	From Jct Hwy 33 to Jct Hwy 48		
No. 35	From 3.8 km North of Jct Hwy 1 to Jct Hwy 10		
No. 36	From U.S. Border to Jct Hwy 2		
No. 37	U.S. Border to Climax		
No. 37	2.35 km North of Gull Lake to Cabri		
No. 42	From Riverhurst Ferry to Jct Hwy 373		

- 28-W2. (MO/3-969-2021-WI1) to is 9-month primary.
- No. 229 From Jct Hwy 9 to Jct Hwy 47
- No. 247 From Jct Hwy 9 to Jct Hwy 47
- No. 271 Maple Creek (Jct Hwy 21) to Fort Walsh
- No. 301 From Jct Hwy 1 from 200 metres north of the bridge to Buffalo Pound Park
- No. 306 From Jct Hwy 35 to Riceton
- No. 306 From Riceton to Jct Hwy 6 (*SPECIAL RESTRICTION – 8,000kgs*)
- No. 307 From Jct Hwy 7 to 13 km North of Jct Hwy 7
- No. 308 From Jct Hwy 8 to Grid 600 (*SPECIAL RESTRICTION – 8,000kgs*)
- No. 308 From Grid 600 to Manitoba Border
- No. 310 From Jct Hwy 16 to Jct Hwy 5
- No. 312 From Wakaw to Rosthern
- No. 317 From Jct 51 to 12 KM North
- No. 318 From 2 km N of Jct Hwy 18 to Jct Hwy 361
- No. 320 From Jct Hwy 20 to Domremy
- No. 321 Liebenthal (Jct Hwy 21) to 7 km East of the Alberta Border
- No. 332 Jct Hwy 32 to 7.1 km West of Jct Hwy 32
- No. 332 7.1 km West of Jct Hwy 32 to Hazlet (*SPECIAL RESTRICTION – 8,000kgs*)
- No. 324 From Jct Hwy 378 to Mayfair
- No. 334 From Jct Hwy 13 to 3.3 km south of Jct Hwy 339 (*SEE SPECIAL RESTRICTION 8,000 Kgs*)
- No. 339 From Jct Hwy 334 to Jct Hwy 39 (*SEE SPECIAL RESTRICTION 8,000 Kgs*)
- No. 340 From Radisson to Hafford
- No. 342 From Jct Hwy 42 to Jct Hwy 4
- No. 342 From Jct Hwy 4 to Grid 647 (*north of Lacadena*) (*SPECIAL RESTRICTION – 8,000kgs*)
- No. 343 Jct Hwy 4 to Simmie
- No. 349 From Jct Hwy 35 to 15 km East of Naicam
- No. 350 From U.S. Border to Jct Hwy 18
- No. 357 From Togo to Jct Hwy 8
- No. 358 From Wood Mountain to Limerick
- No. 361 From Manitoba Border to Jct 9
- No. 363 From 43 km West of Moose Jaw to Neidpath
- No. 363 Neidpath to Jct Hwy 4
- No. 364 From Km 19.08 to Km 36.45
- No. 365 From Manitou Beach to Plunkett
- No. 367 From Jct Hwy 42 to Jct Hwy 19
- No. 371 Jct Hwy 21 to Alberta Border (*SPECIAL RESTRICTION – 8,000kgs*)
- No. 373 From Jct Hwy 42 to Birsay
- No. 374 From Jct Hwy 14 to Tramping Lake
- No. 376 From Asquith to Jct Hwy 40
- No. 377 From Jct Hwy 28 to Jct Hwy 6
- No. 378 From Jct Hwy 4 to Jct Hwy 324
- No. 379 McMahan to 14.66 km East of Junction No. 4

The following Access Roads are subject to Spring Road Restrictions.

- | | | | |
|-------|---------------------------------------------------------------|-------|-----------------------------------------------------------|
| No. 1 | Sintaluta Access | No. 2 | Holdfast Access |
| No. 1 | McLean Park Access | No. 2 | Penzance Access |
| No. 1 | Grand Coulee Access (<i>SPECIAL RESTRICTION – 8,000kgs</i>) | No. 2 | Liberty Access |
| No. 1 | North urban limits of Pense | No. 4 | Cando Access |
| No. 1 | Rush Lake Access | No. 4 | Metinota Access |
| No. 1 | Waldeck Access | No. 4 | Blumehof Access (<i>SPECIAL RESTRICTION – 8,000kgs</i>) |
| No. 1 | Webb Access from Km 0 to 1.87 Km | No. 4 | Rhineland Access |
| No. 1 | Tompkins Access | No. 4 | Aquadeo Access |
| No. 1 | Piapot Access | No. 5 | Veregin Access |
| No. 2 | Imperial Access | No. 5 | Mikado Access |
| No. 2 | Simpson Access | No. 5 | Kuroki Access |
| No. 2 | Meacham Access | No. 5 | From Leroy to 6.45 kms West |
| No. 2 | Dana Access | No. 5 | St. Gregor Access |
| No. 2 | Wakaw Lake Park Access | No. 5 | Peterson Access |
| No. 2 | Cudworth Access | No. 5 | St. Denis Access |
| No. 2 | Sun Valley Beach Access | No. 8 | Wroxton Access |

No. 8	Tantallon Access (<i>SPECIAL RESTRICTION – 8,000kgs</i>)	No. 16	Bradwell Access (<i>SPECIAL RESTRICTION – 8,000kgs</i>)
No. 9	Dubuc Access	No. 16	Dalmeny Access from Jct 16 to Jct 305
No. 9	Crystal Lake Access	No. 18	Beaubier
No. 9	Ebenezer Access	No. 18	Gladmar Access
No. 9	Endeavour Access	No. 18	Big Beaver Access
No. 9	Gorlitz Access	No. 18	McCord Access
No. 9	Tadmore Access	No. 19	Strongfield Access
No. 11	Kenaston bypass/alternate	No. 19	Hawarden Access
No. 11	Hanley Access	No. 19	Kincaid Access
No. 11	Dundurn Access	No. 20	Middle Lake Access
No. 11	Gruenthal Access	No. 20	St. Benedict Access
No. 11	Blumenthal Access	No. 20	Tway Access
No. 11	Neunlage Access	No. 20	Duval Access
No. 11	Bethune Access	No. 20	Bulyea Access
No. 11	Findlater Access	No. 21	Golden Prairie Access
No. 11	Findlater Service Road	No. 21	Mendham Access (<i>JCT 21 to 8.1 KM West</i>) (<i>SPECIAL RESTRICTION – 8,000kgs</i>)
No. 11	Aylesbury Access	No. 22	Atwater Access
No. 11	Craik Access	No. 22	Grayson Access
No. 11	Girvin Access	No. 22	Gerald Access
No. 11	Davidson South	No. 22	Dysart Access
No. 12	Hepburn Access (<i>SPECIAL RESTRICTION – 8,000kgs</i>)	No. 22	Earl Grey Service Road
No. 12	Gruenfeldt Access	No. 23	Caragana Access
No. 12	Waldheim Access (<i>SPECIAL RESTRICTION – 8,000kgs</i>)	No. 27	Aberdeen Access
No. 13	Pangman Access	No. 31	Herschel Access
No. 13	Khedive Access	No. 33	Osage Access Road
No. 13	Trossachs Access	No. 35	Wishart Access
No. 13	Bellegarde Access (<i>SPECIAL RESTRICTION – 8,000kgs</i>)	No. 39	Mc Taggart Service Road
No. 13	Arcola Access	No. 39	Wilcox Service Road
No. 13	Forget Access (<i>SPECIAL RESTRICTION – 8,000kgs</i>)	No. 39	Roche Percee Access
No. 14	Senlac Access	No. 40	Speers Access
No. 15	Service Road – All thin membrane surfaced roads from Fenwood to Leross	No. 40	David Laird Campground Access (<i>YEAR ROUND RESTRICTION – 8,000kgs</i>)
No. 15	Punnichy Access	No. 41	Hwy 41 North to Aberdeen
No. 15	Conquest Access	No. 43	Palmer Access
No. 15	Milden Access	No. 44	Plato Access
No. 15	Sovereign Access	No. 44	Glidden Access
No. 15	Semans Access	No. 45	Coteau Beach Access
No. 16	Jansen Access	No. 48	Fairlight Access
No. 16	Guernsey Access	No. 48	Kendal Service Road
No. 16	Plunkett Access	No. 48	Odessa Service Road
No. 16	Viscount Access	No. 48	Vibank Service Road
		No. 49	Hazel Dell Access
		No. 49	Hyas Access
		No. 49	Stenen Access

No. 51 Handel Access
 No. 51 Ruthilda Access
 No. 51 Major Access
 No. 80 Yarbo Access
 No. 219 Glenside Access
 No. 219 Riverside Estate Access
 No. 219 Furdale Access

No. 312 Laird Access (*SPECIAL RESTRICTION – 8,000kgs*)
 No. 322 Kanata Valley Access
 No. 322 Saskatchewan Beach Access
 No. 349 Saint-Front Access
 No. 363 Coderre Access
 No. 363 Shamrock Access
 No. 364 Edenwold Access

The following Rural Municipalities are subject to Spring Road Restrictions

6	CAMBRIA	101	TERRELL	156	INDIAN HEAD
7	SOURIS VALLEY	102	LAKE JOHNSTON	157	SOUTH QU'APPELLE
8	LAKE ALMA	103	SUTTON	158	EDENWOLD
10	HAPPY VALLEY	104	GRAVELBOURG	159	SHERWOOD
11	HART BUTTE	105	GLEN BAIN	164	CHAPLIN
12	POPLAR VALLEY	106	WHISKA CREEK	165	MORSE
18	LONE TREE	107	LAC PELLETIER	166	EXCELSIOR
19	FRONTIER	108	BONE CREEK	167	SASKATCHEWAN LANDING
38	LAURIER	109	CARMICHAEL	181	LANGENBURG
40	BENGOUGH	110	PIAPOT	184	GRAYSON
42	WILLOW BUNCH	111	MAPLE CREEK	187	NORTH QU'APPELLE
43	OLD POST	121	MOOSOMIN	189	LUMSDEN
45	MANKOTA	122	MARTIN	190	DUFFERIN
46	GLEN MCPHERSON	123	SILVERWOOD	191	MARQUIS
49	WHITE VALLEY	124	KINGSLEY	193	EYEBROW
51	RENO	125	CHESTER	194	ENFIELD
64	BROCK	126	MONTMARTRE	214	CANA
65	TECUMSEH	127	FRANCIS	215	STANLEY
67	WEYBURN	128	LAJORD	216	TULLYMET
68	BROKENSHELL	129	BRATT'S LAKE	218	CUPAR
69	NORTON	132	HILLSBOROUGH	219	LONGLAKETON
70	KEY WEST	133	RODGERS	220	MCKILLOP
71	EXCEL	134	SHAMROCK	223	HURON
72	LAKE OF THE RIVERS	135	LAWTONIA	224	MAPLE BUSH
73	STONEHENGE	136	COULEE	225	CANAAN
74	WOOD RIVER	137	SWIFT CURRENT	226	VICTORY
76	AUVERGNE	138	WEBB	228	LACADENA
77	WISE CREEK	139	GULL LAKE	229	MIRY CREEK
79	ARLINGTON	142	ENTERPRISE	230	CLINTWORTH
94	HAZELWOOD	151	ROCANVILLE	231	HAPPYLAND
95	GOLDEN WEST	153	WILLOWDALE	232	DEER FORKS
96	FILLMORE	154	ELCAPO	241	CALDER
97	WELLINGTON	155	WOLSELEY	243	WALLACE

244	ORKNEY	313	LOST RIVER	372	GRANT
245	GARRY	314	DUNDURN	373	ABERDEEN
246	ITUNA BON ACCORD	315	MONTROSE	376	EAGLE CREEK
248	TOUCHWOOD	316	HARRIS	377	GLENSIDE
250	LAST MOUNTAIN VALLEY	317	MARRIOTT	378	ROSEMOUNT
251	BIG ARM	319	WINSLOW	379	REFORD
255	COTEAU	320	OAKDALE	380	TRAMPING LAKE
256	KING GEORGE	321	PRAIRIEDALE	381	GRASS LAKE
260	NEWCOMBE	333	CLAYTON	382	EYE HILL
271	COTE	334	PREECEVILLE	395	PORCUPINE
273	SLIDING HILLS	335	HAZEL DELL	399	LAKE LENORE
274	GOOD LAKE	336	SASMAN	400	THREE LAKES
275	INSINGER	338	LAKESIDE	401	HOODOO
276	FOAM LAKE	339	LEROY	402	FISH CREEK
277	EMERALD	340	WOLVERINE	403	ROSTHERN
279	MOUNT HOPE	341	VISCOUNT	405	GREAT BEND
280	WREFORD	343	BLUCHER	406	MAYFIELD
281	WOOD CREEK	344	CORMAN PARK	409	BUFFALO
282	MCCRANEY	345	VANSCOY	410	ROUND VALLEY
283	ROSEDALE	346	PERDUE	411	SENLAC
284	RUDY	347	BIGGAR	431	ST. LOUIS
285	FERTILE VALLEY	349	GRANDVIEW	436	DOUGLAS
288	PLEASANT VALLEY	350	MARIPOSA	437	NORTH BATTLEFORD
301	ST. PHILIPS	351	PROGRESS	438	BATTLE RIVER
303	KEYS	352	HEART'S HILL	440	HILLSDALE
304	BUCHANAN	366	KELVINGTON	468	MEOTA
307	ELFROS	368	SPALDING	470	PAYNTON
309	PRAIRIE ROSE	369	ST. PETER	494	CANWOOD
310	USBORNE	370	HUMBOLDT		
312	MORRIS	371	BAYNE		

**The following section is not part of the Order but is appended as INFORMATION:
Special Weight Restrictions on Selected Provincial Highways.**

The following highways are subject to reduced weights, year round, by regulation in accordance with the *Vehicle Weight and Dimension Regulations, 2010*

Hwy	From	To	Description
955	South abutment of the Douglas River Bridge	Northern most limit of Highway 955	Maximum GVW 41 500 kg

The following BRIDGES are restricted by Minister's ORDER to a maximum gross vehicle weight of Secondary Weights year-round. Winter Weights are not allowed.

Hwy	Bridge Location Description
2	Bridge over Little Red River from Southern Bridge Abutment to Northern Bridge Abutment. Bridge is located approximately 4.4 km south of Jct. with Hwy 355 and Hwy 2 near Spruce Home. Bridge is located on East Frontage Road.
3	Bridge over Red Deer River from Eastern Bridge Abutment to Western Bridge Abutment located approximately .5km west of Erwood, Sk.
4 Metinota Access	Bridge over Jackfish Narrows from Eastern Bridge Abutment to Western Bridge Abutment. Bridge is located in access road approximately 3.1km west of the Jct. with Hwy 4. Bridge is located on access road.
312 Gabriel Dumont Bridge	Truss Bridge over South Saskatchewan River from Eastern Bridge Abutment to Western Bridge Abutment.
334	Bridge over Willow Creek from Eastern Bridge Abutment to Western Bridge Abutment. Bridge is located approximately 18.6 km east of Avonlea, sk. and the Jct. with Hwy 339 and Hwy 334.
919	Bridge over Martineau River from Southern Bridge Abutment to Northern Bridge Abutment. Bridge is located approximately 39.5km northwest of the Jct. with Hwy 21 and Hwy 950
935	Bridge over Morin River from the Southern Bridge Abutment to the Northern Bridge Abutment. Bridge is located approximately 7km north of the Jct. with Hwy 165 and Hwy 935.
955 Clearwater Truss Bridge	Truss Bridge over Clearwater River from Southern Bridge Abutment to Northern Bridge Abutment. Bridge is located approximately - 62 km north of Jct 155 and 955 to the Clearwater Bridge.
980 Elbow Lake Access	Bridge over Midnight Creek from Eastern Bridge Abutment to Western Bridge Abutment. Bridge is located approximately .3 km west of Elbow Lake, Sk.. The bridge is located on Spirit Lake/Elbow Lake access road.

The following BRIDGES are restricted by Minister's ORDER to a maximum gross vehicle weight of Primary Weights year-round. Winter Weights are not allowed.

Hwy	Bridge Location Description
2	Northbound Bridge over Hwy 1 from Southern Bridge Abutment to Northern Bridge Abutment. Bridge is located North of Moose Jaw at Jtc. with Hwy 1 and Hwy 2
2	Southbound Bridge over Hwy 1 from Southern Bridge Abutment to Northern Bridge Abutment. Bridge is located north of Moose Jaw Sk. at Jtc. with Hwy 1 and Hwy 2
6	Bridge over Barrier River Overflow from Southern Bridge Abutment to Northern Bridge Abutment. Bridge is located approximately 25.7 km south of Melfort, Sk.

The following highways are restricted by Minister's ORDER to a maximum gross vehicle weight of 8 000 kilograms year round.

Highway	From	To
1 Caron Access	Jct Hwy 1	Hamlet of Caron
1 Grand Coulee Access	Jct Hwy 1	Village of Grand Coulee
2 Eastside Service Road near Prince Albert	Jct Boundary Street East Service Rd north	Jct Township Road (approx. 2.4 kms)
4 Blumenhof Access	Jct Hwy 4 east	Blumenhof
6 Leroy Access	Jct Hwy 6	Town of Leroy
8 Tantallon Access	Jct. Hwy 8	Village of Tantallon
12 Hepburn Access	Jct. Hwy 12	Village of Hepburn
12 Waldheim Access	Jct. Hwy 12	100 meters west of the west boundary of NW 15-42-5 W3M in the town of Waldheim.
13 Bellegarde Access	Jct. Hwy 13	Bellegarde
13 Forget Access	Jct. Hwy 13	The Village of Forget
15	Jct. Hwy 16	Jct. Hwy 9
16 Bradwell Access	Jct. Hwy 16	Village of Bradwell
21 Mendham Access	Jct Hwy 21 Mendham Access	Intersection with the North-South portion of the Municipal Alternate Truck Route
30	Eston Regional Park located at the southwest corner of Section 20, Township 23, Range 20, West 3rd Meridian	The jct. of municipal Hwy located at the north-east corner of Section 34, Township 28, Range 20, West 3rd Meridian
31	Jct. Hwy 4	Herschel Access Road
31	Grid 656 at NW corner of Section 34, Township 31, Range 17, west of the 3rd Meridian	The intersection of the Plenty grid at the NW corner, Section 21, Township 32, Range 19, west of the 3rd Meridian
39 Bienfait Access	Jct Hwy 39	Jct Hwy 18 (In the Town of Bienfait)
40 David Laird Campsite Road	Jct No. Hwy 40	Jct Hwy No. 16
41 Alvena Access	Jct Hwy 41	2nd Avenue in Village of Alvena
42	Jct Hwy 42 - Keeler Service Road/Railway Ave. S.	Keeler Service Road/Railway Ave. to RM Road 643
42 (1)	Jct Hwy 373	Jct Hwy 45 in the Town of Lucky Lake

42	From its Jct with Hwy 44 (km 43.68)	its Jct with Hwy 15 (km 59.92), for a total of 16.2 km.
44(1)	Jct Hwy 19	Junction with the Danielson Provincial Park Access located in the southeast of Section 32, Township 26, Range 6, West of the 3rd Meridian.
44(1)	Jct Hwy 21	Westerly to the Jct with the municipal road located in the NE 1/4 of Section 24, Township 26, Range 27, west of the 3rd Meridian
44(1)	Jct with the municipal road located at the SW 1/4 of Section 26, Township 26, Range 27, west of the 3rd Meridian	Jct with the municipal road located east of Section 31, Township 26, Range 27, west of the 3rd Meridian
306	Riceton	Jct Hwy 6
308	Jct Hwy 8	Jct with Primary Grid 600
310	Jct of Grid 743	Jct of Hwy No. 16
312 Laird Access	Jct Hwy 312	The Village of Laird
332	7.1 km west of Jct Hwy 32	The Village of Hazlet except for that portion between the east and west Jct of Hwy 37
334	Jct Hwy 13	3.3 km south of Jct Hwy 339
339	Village of Avonlea	Jct. of Hwy 39 except for that portion from 11.4 km west of Avonlea to 21.2 km west of Avonlea
342	Jct Hwy 4	Jct of Primary Grid 647 north of Lacadena
371	Jct Hwy 21	Alberta Border

The following highways are restricted by Minister's ORDER to a maximum gross vehicle weight of 8 000 kilograms from March 1st to November 30th each year.

Hwy	From	To
302	Cecil Ferry Road at the SE corner of Section 22, Township 48, Range 24, west of the 2nd Meridian	Jct of the municipal road located at SE corner of Section 5, Township 49, Range 22, west of second Meridian (located by the Weldon Ferry)

The following access road is restricted by Minister's ORDER to a maximum gross vehicle weight of 8 000 kilograms from March 1st to November 30th each year.

Hwy	From	To
2 Paddockwood Access	Jct Hwy 2	Grid Road intersection NE Section 23, Township 52, Range 25, W2nd Meridian

The following highway is restricted by Minister's ORDER to a maximum gross vehicle weight of 8 000 kilograms from March 15th to November 15th each year and *when the ambient temperature is above -6°C*.

Hwy	From	To
8	0.5 km North of Junction Highway 49 at Norquay	The community of Swan Plain at the south boundary of SE 27-36-1-W2M

The following Access Road is restricted by Minister's ORDER to a maximum gross vehicle weight of 8 000 kilograms from February 24 to November 15th each year and *when the ambient temperature is above -6°C*.

Hwy	From	To
35 Aylsham Access	Hwy 35 (NW corner of section 32, township 48, range 14, west of second Meridian)	Aylsham (NE corner of section 34, township 48, range 13, west of second Meridian)

The following highway is restricted by Minister's ORDER to a maximum gross vehicle weight of 75% of primary highway weights, except during winter weight season, when winter secondary weights shall apply.

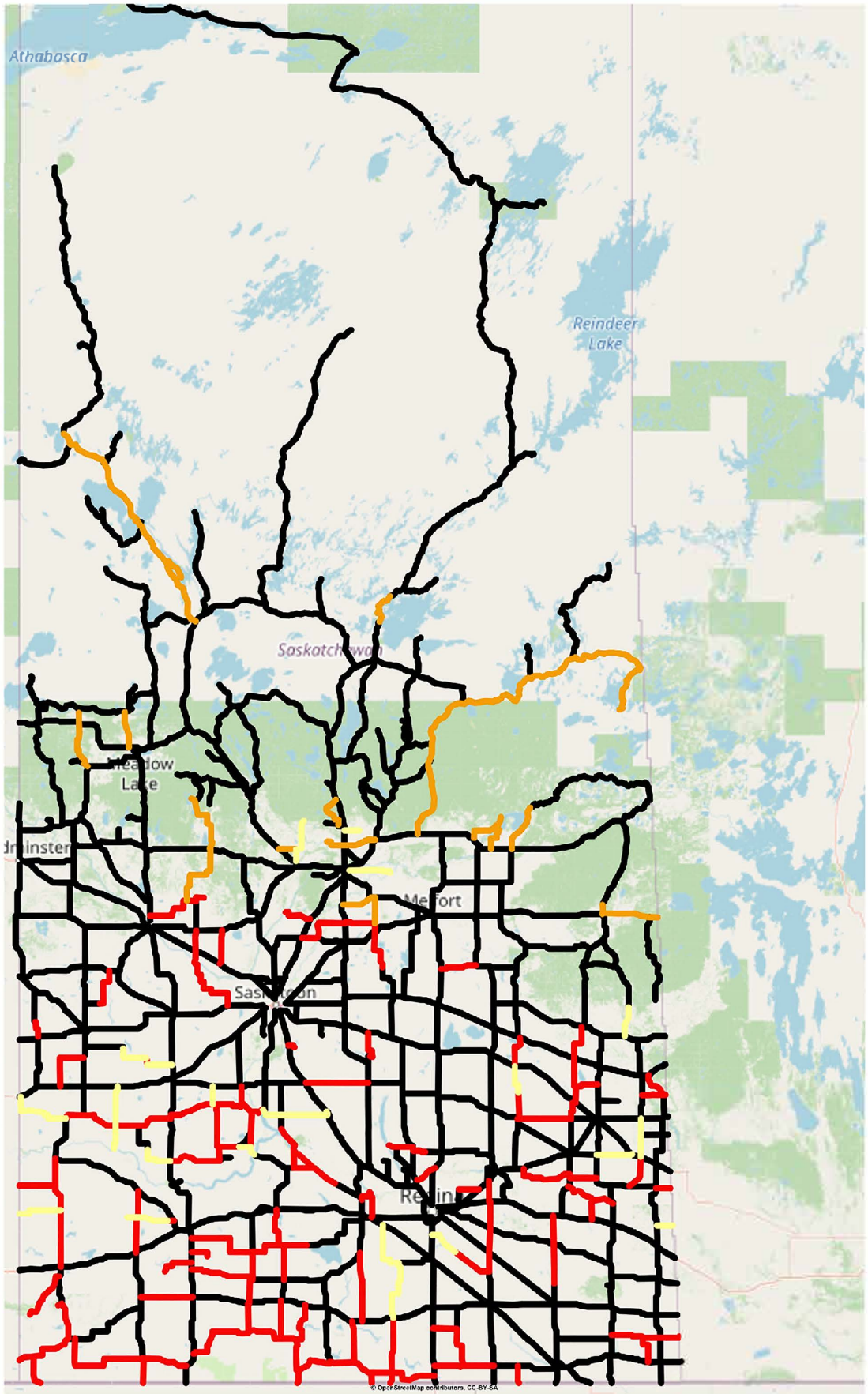
Hwy	From	To
240	Junction Highway 55	No. 240 - From Jct Hwy 55 to Prince Albert National Park SPECIAL RESTRICTIONS – 4.5 kg per mm (252 lbs/in) width of tire (manufacturer's stamped dimension) on any wheel to a maximum GVW of 22,686 kg (50,000 lbs), including the steering axle.

For detailed information on Rural Roads, call the local rural municipality or for Provincial Highway information email the Highway Hotline hotline@gov.sk.ca. The rural municipality administers and maintains the alternate haul routes. They are also responsible for issuing any overweight permits associated with the alternate haul routes.




Saskatchewan Ministry of Highways and Infrastructure provides seasonal highway restriction information on the Internet at: <http://www.saskatchewan.ca/truckingweights> under Special Weights.

Truckers can also contact the Saskatchewan Ministry of Highways, Trucking inquiry line at Toll free in Saskatchewan: 1-866-933-5290 Out of Saskatchewan: 306-933-5290 email: mhitrucking@gov.sk.ca

Saskatchewan  Spring Road Restriction Order 5 2025



Winter Weight Season

-  In Effect
-  Not In Effect
-  Future Restrictions

Spring Weight Season

-  No Restrictions
-  Restricted
-  Future Restrictions

Special Weight Restrictions

-  Special Weight Restrictions

Notes

© OpenStreetMap contributors, CC-BY-SA