

Minister's Order Pursuant to section 35(1) of "The Highways and Transportation Act, 1997"

Pursuant to section 35(1) of "*The Highways and Transportation Act, 1997*" it is hereby ordered that, effective as stated in this Order, **at 12:01 am, Monday May 12, 2025** until further notice, vehicles other than those exempted in Part II, section 3 (2) and 3 (5) of "*The Vehicle Weight and Dimensions Regulations, 2010*", shall be restricted as follows:

Steering Axle

- 10.0 kg per mm (560 pounds per inch) width of tire (manufacturer's stamped dimension) to a maximum of
- 5,500 kg on the steering axle for a truck or truck tractor equipped with a single steering axle.
- 11,000 kg on the steering axle group for a truck or truck tractor equipped with a tandem axle steering group.

Other Axles

- 6.25 kg per mm (350 pounds per inch) width of tire (manufacturer's stamped dimension) to a maximum of:
- 1,650 kg (3,638 pounds) per tire, or
- 2,630 kg per tire for axles equipped with single tires with a width of 445 mm or greater.

This order does not permit the weight on any axle, axle group or vehicle from exceeding the maximum weight prescribed in the "*The Vehicle Weight and Dimension Regulations, 2010*" for that axle, axle group or vehicle.

The restriction does not apply to:

- Emergency vehicles,
- Ministry of Highways vehicles and municipal maintenance equipment when conducting maintenance or accessing sites on or along the restricted highway,
- SaskPower, SaskEnergy and SaskTel vehicles when accessing sites along the restricted route,
- Recreational vehicles,
- Buses,
- Farm Equipment operated or towed,
- Vehicles directly crossing a Provincial Highway at an intersecting public highway or private road.

Please note that some provincial highways and bridges are subject to special reduced or restricted weights and some are for specific periods of the year, some for precise temperatures. A detailed description of these special restrictions is listed on the last four pages of this Order.

The following Provincial Highways will be removed from Spring Road Restrictions at 12:01 am Monday May 12, 2025

No. 5	From Manitoba Border to Jct Hwy 57	No. 52	From Willowbrook to Homefield
No. 8	From Norquay to 14.6 km. South of Forest Boundary (SPECIAL RESTRICTIONS - 8,000kgs from Midnight Mar. 14 to Midnight Nov. 15)	No. 52	From Homefield to Jct Hwy 15
No. 15	From Jct Hwy 16 to Jct Hwy 9 (SPECIAL RESTRICTION – 8,000kgs)	No. 80	From K-1 Mine Access to Churchbridge
No. 15	From Jct Hwy 2 to 27.8 km West	No. 80	From North town limits of Churchbridge to Jct Hwy 10 (SPECIAL RESTRICTION – 8,000kgs)
No. 15	From Farrerdale to Jct Hwy 11	No. 201	From 500m north of Jct Hwy 1 to Hwy 247
No. 22	From Manitoba Border to South Jct Hwy 8	No. 211	From Jct Hwy 11 to Blackstrap
No. 20	From Middle Lake to Jct Hwy 320	No. 212	From Jct Hwy 11 to Fort Carlton Park
No. 20	From 1.6 km North of Pilger to Middle Lake	No. 225	Hwy 225 from jct. of Hwy 2 from Grid Road is spring road bans and from Grid to Hwy 312.
No. 22	From Jct Hwy 9 to Jct Hwy 47	No. 225	Hwy 225 from its junction rural municipal road at the E of the NE7-44-27-W2 (east of St. Isidore-de-Bellevue) to the Jct with the rural municipal road at the E. of the NE11-27-28-W2. (MO/3-969-2021-WI1) to 9-month primary.
No. 22	From Jct Hwy 47 to East Jct grid 617	No. 229	From Jct Hwy 9 to Jct Hwy 47
No. 42	From Riverhurst Ferry to Jct Hwy 373	No. 312	From Wakaw to Rosthern
No. 42	From Jct Hwy 373 to Lucky Lake (SPECIAL RESTRICTION – 8,000kgs)	No. 320	From Jct Hwy 20 to Domremy
No. 42	From Lucky Lake to Jct Hwy 342	No. 247	From Jct Hwy 9 to Jct Hwy 47
No. 42	From its Jct with Hwy 44 (km 43.68) to its Jct with Hwy 15 (km 59.92), for a total of 16.2 km. (SPECIAL RESTRICTION – 8,000kgs)	No. 349	From Jct Hwy 35 to 15 km East of Naicam
No. 44	From Jct Hwy 19 to Danielson Provincial Park Access (SPECIAL RESTRICTION – 8,000kgs)	No. 310	From Jct Hwy 52 to Grid 743
No. 44	From Hwy 44 from 1.12km west of the junction of Hwy 219 to Hwy 45	No. 310	From Jct Grid 743 to Jct Hwy 16 (SPECIAL RESTRICTION – 8,000kgs)
No. 44	From Dinsmore east to Macrorie	No. 310	From Jct Hwy 16 to Jct Hwy 5
No. 45	From Birsay to Jct Hwy 15	No. 357	From Togo to Jct Hwy 8
No. 45	From 8 kms South of Swanson to Delisle	No. 365	From Manitou Beach to Plunkett
No. 47	From Willowbrook to Buchanan	No. 373	From Jct Hwy 42 to Birsay
No. 47	From 1 km North of Buchanan to Preeceville		

The following Access Roads will be removed from Spring Road Restrictions at 12:01 am Monday May 12, 2025

No. 2	Imperial Access	No. 5	Mikado Access
No. 2	Simpson Access	No. 5	Kuroki Access
No. 2	Meacham Access	No. 5	From Leroy to 6.45 kms West
No. 2	Dana Access	No. 5	St. Gregor Access
No. 2	Wakaw Lake Park Access	No. 5	Peterson Access
No. 2	Cudworth Access	No. 5	St. Denis Access
No. 5	Veregin Access	No. 8	Wroxton Access

No. 9	Dubuc Access	No. 16	Bradwell Access (SPECIAL RESTRICTION – 8,000kgs)
No. 9	Crystal Lake Access	No. 16	Dalmeny Access from Jct 16 to Jct 305
No. 9	Ebenezer Access	No. 19	Strongfield Access
No. 9	Endeavour Access	No. 19	Hawarden Access
No. 9	Gorlitz Access	No. 20	Middle Lake Access
No. 9	Tadmor Access	No. 20	St. Benedict Access
No. 11	Kenaston bypass/alternate	No. 20	Tway Access
No. 11	Hanley Access	No. 22	Atwater Access
No. 11	Dundurn Access	No. 22	Grayson Access
No. 11	Gruenthal Access	No. 22	Gerald Access
No. 11	Blumenthal Access	No. 23	Caragana Access
No. 11	Neunlage Access	No. 27	Aberdeen Access
No. 12	Gruenfeldt Access	No. 35	Wishart Access
No. 12	Waldheim Access (SPECIAL RESTRICTION – 8,000kgs)	No. 45	Coteau Beach Access
No. 15	Service Road – All thin membrane surfaced roads from Fenwood to Leross	No. 49	Hazel Dell Access
No. 15	Punnichy Access	No. 49	Hyas Access
No. 15	Conquest Access	No. 49	Stenen Access
No. 16	Jansen Access	No. 80	Yarbo Access
No. 16	Guernsey Access	No. 219	Glenside Access
No. 16	Plunkett Access	No. 219	Riverside Estate Access
No. 16	Viscount Access	No. 219	Furda Access
		No. 312	Laird Access (SPECIAL RESTRICTION – 8,000kgs)
		No. 349	Saint-Front Access

The following Rural Municipalities **will be removed** from Spring Road Restrictions **at 12:01 am Monday May 12, 2025**

181	LANGENBURG	255	COTEAU	285	FERTILE VALLEY
184	GRAYSON	273	SLIDING HILLS	301	ST. PHILIPS
214	CANA	274	GOOD LAKE	303	KEYS
215	STANLEY	275	INSINGER	304	BUCHANAN
241	CALDER	276	FOAM LAKE	307	ELFROS
243	WALLACE	277	EMERALD	312	MORRIS
244	ORKNEY	280	WREFORD	313	LOST RIVER
245	GARRY	281	WOOD CREEK	314	DUNDURN
246	ITUNA BON ACCORD	282	MCCRANEY	315	MONTROSE
248	TOUCHWOOD	283	ROSEDALE	333	CLAYTON
		284	RUDY	334	PREECEVILLE

335	HAZEL DELL	366	KELVINGTON	399	LAKE LENORE
336	SASMAN	368	SPALDING	400	THREE LAKES
338	LAKESIDE	369	ST. PETER	403	ROSTHERN
340	WOLVERINE	370	HUMBOLDT	431	ST. LOUIS
341	VISCOUNT	371	BAYNE	464	LEASK
344	CORMAN PARK	372	GRANT	520	PADDOCKWOOD

Signed on behalf of the Minister on this 9th day of May 2025.



Lana Eering
Government of Saskatchewan
Ministry of Highways
Manager, Highway Hotline/Emergency Planning Officer

The following Provincial Highways **are** subject to SPECIAL Spring Road Restrictions.

Highway No. 55 - (old Hwy 55) From Jct Hwy 240 to 3 km West (Marchant Grove) **SPECIAL RESTRICTIONS** – 4.5 kg per mm (252 lbs/in) width of tire (manufacturer’s stamped dimension) on any wheel to a maximum GVW of 22,686 kg (50,000 lbs), including the steering axle.

Highway No. 240 - From Jct Hwy 55 to Prince Albert National Park **SPECIAL RESTRICTIONS** – 4.5 kg per mm (252 lbs/in) width of tire (manufacturer’s stamped dimension) on any wheel to a maximum GVW of 22,686 kg (50,000 lbs), including the steering axle.

The following Provincial Highways **are** subject to Spring Road Restrictions.

No. 3	From Manitoba Border to Hudson Bay	No. 123	From Jct Hwy 55 to E.B. Campbell Dam
No. 4	From Jct Hwy 55 to Jct Hwy 224	No. 155	From 7.0 km North of Jct Hwy 165 to La Loche
No. 9	From Hudson Bay to Ruby Lake Access	No. 167	From Sturgeon Weir River to Creighton
No. 20	From Jct Hwy 320 to Jct Hwy 3	No. 167	From Denare Beach to Creighton
No. 24	From 11 km North of Spiritwood to Leoville	No. 255	From Jct Hwy 55 to Tobin Lake
No. 24	From Leoville to Chitek Lake	No. 302	From Weldon Ferry to 21 km East of Prince Albert (SPECIALRESTRICTION – 8,000kgs)
No. 25	From Jct Hwy 3 to Jct Hwy 2	No. 324	From Jct Hwy 378 to Mayfair
No. 26	From 14 km North of Jct Hwy 304 to South Jct of 55 and 26 south of Peerless	No. 340	From Radisson to Hafford
No. 35	From 3.8 km North of Jct Hwy 1 to Jct Hwy 10	No. 342	From Jct Hwy 42 to Jct Hwy 4
No. 35	From 3.8 km North of Jct Hwy 1 to Jct Hwy 10	No. 342	From Jct Hwy 4 to Grid 647 (north of Lacadena) (SPECIAL RESTRICTION – 8,000kgs)
No. 35	From White Fox to Roads End	No. 355	From Meath Park to Sturgeon Lake Reserve
No. 55	(old Hwy 55) From Jct Hwy 55 to 3 km West (Marchant Grove)	No. 378	From Jct Hwy 324 to Spiritwood
No. 102	From La Ronge Airport Access to 1.5 km N. of Nemeiben River Bridge	No. 908	From Jct Hwy 155 to Ile-a-la-Crosse
No. 106	From Jct Hwy 928 to Creighton	No. 953	From Jct Hwy 2 to Jct Hwy 263

The following Access Roads **are** subject to Spring Road Restrictions

No. 2	Imperial Access	No. 3	30 Metres N of the railway crossing at Birch Hills
No. 2	Simpson Access	No. 3	Shell Lake Access
No. 2	Meacham Access	No. 3	Medstead Access
No. 2	Dana Access	No. 3	Monte Nebo Access
No. 2	Wakaw Lake Park Access	No. 3	Turtle Lake South Bay Access
No. 2	Cudworth Access	No. 4	Meadow Lake Airport – 220 meters West of Jct Hwy 4(Meadow Lake Urban Limits) to Meadow Lake Airport
No. 2	Weyakwin Access	No. 5	Veregin Access
No. 2	Ramsey Bay Access	No. 5	Mikado Access
No. 2	Paddockwood Access (SPECIAL RESTRICTION – 8,000kgs)	No. 5	Kuroki Access
No. 3	Prairie River Access	No. 5	From Leroy to 6.45 kms West
No. 3	Crooked River Access	No. 5	St. Gregor Access
No. 3	Eldersley Access	No. 5	Peterson Access
No. 3	Valparaiso Access	No. 5	St. Denis Access
No. 3	Weldon Access		
No. 3	Brancepeth Access		

No. 6 Lac Vert Accessc
 No. 6 Pleasantdale Access
 No. 6 Fairy Glen Access
 No. 8 Wroxton Access
 No. 9 Dubuc Access
 No. 9 Crystal Lake Access
 No. 9 Ebenezer Access
 No. 9 Endeavour Access
 No. 9 Gorlitz Access
 No. 11 Macdowell Access
 No. 23 Zenon Park Access
 No. 23 Weekes Access
 No. 25 Birch Hills Access
 No. 25 Hagen Access
 No. 35 Sylvania Access

No. 35 Ridgedale Access
 No. 35 Aylsham Access (*SPECIAL RESTRICTION – 8,000kgs*)
 No. 40 Leask Access
 No. 40 Marcelin Access
 No. 41 Hwy 41 North to Aberdeen
 No. 43 Palmer Access
 No. 55 Love Access
 No. 55 Garrick Access
 No. 55 Choiceland Access
 No. 55 Snowden Access
 No. 123 Cumberland House Bridge to the Cumberland House Airport
 No. 155 Buffalo Narrows Airport

The following Rural Municipalities are subject to Spring Road Restrictions

331 LIVINGSTON	488 TORCH RIVER	521 DISTRICT OF LAKELAND
461 PRINCE ALBERT	493 SHELLBROOK	555 BIG RIVER
463 DUCK LAKE	496 SPIRITWOOD	561 LOON LAKE
466 MEETING LAKE	497 MEDSTEAD	588 MEADOW LAKE
467 ROUND HILL	498 PARKDALE	622 BEAVER RIVER
486 MOOSE RANGE	499 MERVIN	
487 NIPAWIN	501 FRENCHMAN BUTTE	

**The following section is not part of the Order but is appended as INFORMATION:
Special Weight Restrictions on Selected Provincial Highways.**

The following highways are subject to reduced weights, year round, by regulation in accordance with the *Vehicle Weight and Dimension Regulations, 2010*

Hwy	From	To	Description
955	South abutment of the Douglas River Bridge	Northern most limit of Highway 955	Maximum GVW 41 500 kg

The following BRIDGES are restricted by Minister's ORDER to a maximum gross vehicle weight of Secondary Weights year-round. Winter Weights are not allowed.

Hwy	Bridge Location Description
2	Bridge over Little Red River from Southern Bridge Abutment to Northern Bridge Abutment. Bridge is located approximately 4.4 km south of Jct. with Hwy 355 and Hwy 2 near Spruce Home. Bridge is located on East Frontage Road.
3	Bridge over Red Deer River from Eastern Bridge Abutment to Western Bridge Abutment located approximately .5km west of Erwood, Sk.
4 Metinota Access	Bridge over Jackfish Narrows from Eastern Bridge Abutment to Western Bridge Abutment. Bridge is located in access road approximately 3.1km west of the Jct. with Hwy 4. Bridge is located on access road.
312 Gabriel Dumont Bridge	Truss Bridge over South Saskatchewan River from Eastern Bridge Abutment to Western Bridge Abutment.
334	Bridge over Willow Creek from Eastern Bridge Abutment to Western Bridge Abutment. Bridge is located approximately 18.6 km east of Avonlea, sk. and the Jct. with Hwy 339 and Hwy 334.
919	Bridge over Martineau River from Southern Bridge Abutment to Northern Bridge Abutment. Bridge is located approximately 39.5km northwest of the Jct. with Hwy 21 and Hwy 950
935	Bridge over Morin River from the Southern Bridge Abutment to the Northern Bridge Abutment. Bridge is located approximately 7km north of the Jct. with Hwy 165 and Hwy 935.
955 Clearwater Truss Bridge	Truss Bridge over Clearwater River from Southern Bridge Abutment to Northern Bridge Abutment. Bridge is located approximately - 62 km north of Jct 155 and 955 to the Clearwater Bridge.
980 Elbow Lake Access	Bridge over Midnight Creek from Eastern Bridge Abutment to Western Bridge Abutment. Bridge is located approximately .3 km west of Elbow Lake, Sk.. The bridge is located on Spirit Lake/Elbow Lake access road.

The following BRIDGES are restricted by Minister's ORDER to a maximum gross vehicle weight of Primary Weights year-round. Winter Weights are not allowed.

Hwy	Bridge Location Description
2	Northbound Bridge over Hwy 1 from Southern Bridge Abutment to Northern Bridge Abutment. Bridge is located North of Moose Jaw at Jtc. with Hwy 1 and Hwy 2
2	Southbound Bridge over Hwy 1 from Southern Bridge Abutment to Northern Bridge Abutment. Bridge is located north of Moose Jaw Sk. at Jtc. with Hwy 1 and Hwy 2
6	Bridge over Barrier River Overflow from Southern Bridge Abutment to Northern Bridge Abutment. Bridge is located approximately 25.7 km south of Melfort, Sk.

The following highways are restricted by Minister's ORDER to a maximum gross vehicle weight of 8 000 kilograms year round.

Highway	From	To
1 Caron Access	Jct Hwy 1	Hamlet of Caron
1 Grand Coulee Access	Jct Hwy 1	Village of Grand Coulee
2 Eastside Service Road near Prince Albert	Jct Boundary Street East Service Rd north	Jct Township Road (approx. 2.4 kms)
4 Blumenhof Access	Jct Hwy 4 east	Blumenhof
6 Leroy Access	Jct Hwy 6	Town of Leroy
8 Tantallon Access	Jct. Hwy 8	Village of Tantallon
12 Hepburn Access	Jct. Hwy 12	Village of Hepburn
12 Waldheim Access	Jct. Hwy 12	100 meters west of the west boundary of NW 15-42-5 W3M in the town of Waldheim.
13 Bellegarde Access	Jct. Hwy 13	Bellegarde
13 Forget Access	Jct. Hwy 13	The Village of Forget
15	Jct. Hwy 16	Jct. Hwy 9
16 Bradwell Access	Jct. Hwy 16	Village of Bradwell
21 Mendham Access	Jct Hwy 21 Mendham Access	Intersection with the North-South portion of the Municipal Alternate Truck Route
30	Eston Regional Park located at the southwest corner of Section 20, Township 23, Range 20, West 3rd Meridian	The jct. of municipal Hwy located at the north-east corner of Section 34, Township 28, Range 20, West 3rd Meridian
31	Jct. Hwy 4	Herschel Access Road
31	Grid 656 at NW corner of Section 34, Township 31, Range 17, west of the 3rd Meridian	The intersection of the Plenty grid at the NW corner, Section 21, Township 32, Range 19, west of the 3rd Meridian
39 Bienfait Access	Jct Hwy 39	Jct Hwy 18 (In the Town of Bienfait)
40 David Laird Campsite Road	Jct No. Hwy 40	Jct Hwy No. 16
41 Alvena Access	Jct Hwy 41	2nd Avenue in Village of Alvena
42	Jct Hwy 42 - Keeler Service Road/Railway Ave. S.	Keeler Service Road/Railway Ave. to RM Road 643
42 (1)	Jct Hwy 373	Jct Hwy 45 in the Town of Lucky Lake

42	From its Jct with Hwy 44 (km 43.68)	its Jct with Hwy 15 (km 59.92), for a total of 16.2 km.
44(1)	<i>Jct Hwy 19</i>	<i>Junction with the Danielson Provincial Park Access located in the southeast of Section 32, Township 26, Range 6, West of the 3rd Meridian.</i>
44(1)	<i>Jct Hwy 21</i>	<i>Westerly to the Jct with the municipal road located in the NE 1/4 of Section 24, Township 26, Range 27, west of the 3rd Meridian</i>
44(1)	<i>Jct with the municipal road located at the SW 1/4 of Section 26, Township 26, Range 27, west of the 3rd Meridian</i>	<i>Jct with the municipal road located east of Section 31, Township 26, Range 27, west of the 3rd Meridian</i>
306	Riceton	Jct Hwy 6
308	Jct Hwy 8	Jct with Primary Grid 600
310	Jct of Grid 743	Jct of Hwy No. 16
312 Laird Access	Jct Hwy 312	The Village of Laird
332	7.1 km west of Jct Hwy 32	The Village of Hazlet except for that portion between the east and west Jct of Hwy 37
334	Jct Hwy 13	3.3 km south of Jct Hwy 339
339	Village of Avonlea	Jct. of Hwy 39 except for that portion from 11.4 km west of Avonlea to 21.2 km west of Avonlea
342	Jct Hwy 4	Jct of Primary Grid 647 north of Lacadena
371	Jct Hwy 21	Alberta Border

The following highways are restricted by Minister's ORDER to a maximum gross vehicle weight of 8 000 kilograms from March 1st to November 30th each year.

Hwy	From	To
302	Cecil Ferry Road at the SE corner of Section 22, Township 48, Range 24, west of the 2nd Meridian	Jct of the municipal road located at SE corner of Section 5, Township 49, Range 22, west of Second Meridian (located by the Weldon Ferry)

The following access road is restricted by Minister's ORDER to a maximum gross vehicle weight of 8 000 kilograms from March 1st to November 30th each year.

Hwy	From	To
2 Paddockwood Access	Jct Hwy 2	Grid Road intersection NE Section 23, Township 52, Range 25, W2nd Meridian

The following highway is restricted by Minister's ORDER to a maximum gross vehicle weight of 8 000 kilograms from March 15th to November 15th each year and *when the ambient temperature is above -6°C*.

Hwy	From	To
8	0.5 km North of Junction Highway 49 at Norquay	The community of Swan Plain at the south boundary of SE 27-36-1-W2M

The following Access Road is restricted by Minister's ORDER to a maximum gross vehicle weight of 8 000 kilograms from February 24 to November 15th each year and *when the ambient temperature is above -6°C*.

Hwy	From	To
35 Aylsham Access	Hwy 35 (NW corner of section 32, township 48, range 14, west of second Meridian)	Aylsham (NE corner of section 34, township 48, range 13, west of second Meridian)

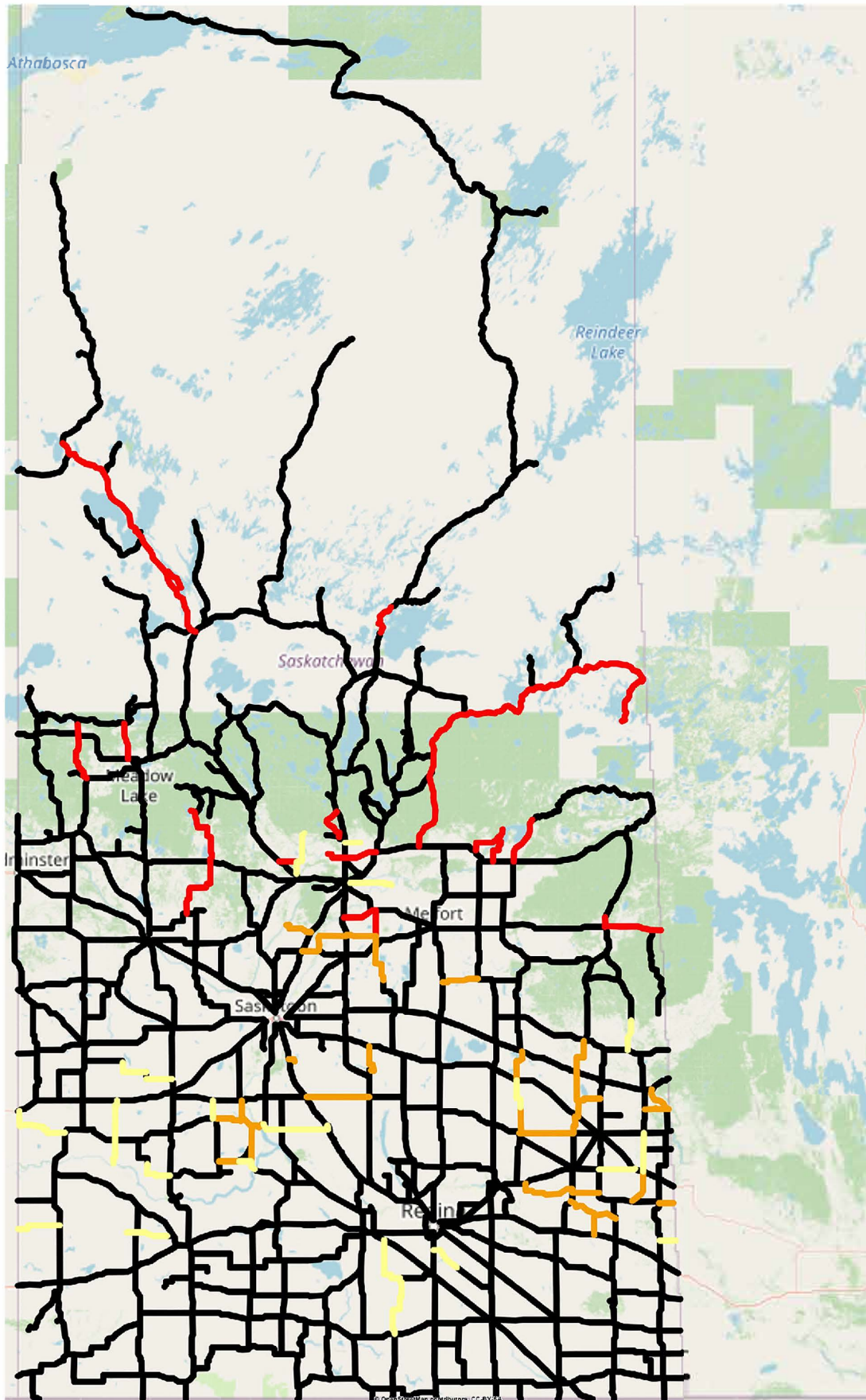
The following highway is restricted by Minister's ORDER to a maximum gross vehicle weight of 75% of primary highway weights, except during winter weight season, when winter secondary weights shall apply.

Hwy	From	To
240	Junction Highway 55	No. 240 - From Jct Hwy 55 to Prince Albert National Park SPECIAL RESTRICTIONS – 4.5 kg per mm (252 lbs/in) width of tire (manufacturer's stamped dimension) on any wheel to a maximum GVW of 22,686 kg (50,000 lbs), including the steering axle.

For detailed information on Rural Roads, call the local rural municipality or for Provincial Highway information email the Highway Hotline hotline@gov.sk.ca. The rural municipality administers and maintains the alternate haul routes. They are also responsible for issuing any overweight permits associated with the alternate haul routes.

Saskatchewan Ministry of Highways and Infrastructure provides seasonal highway restriction information on the Internet at: <http://www.saskatchewan.ca/truckingweights> under Special Weights.

Truckers can also contact the Saskatchewan Ministry of Highways, Trucking inquiry line at Toll free in Saskatchewan: 1-866-933-5290 Out of Saskatchewan: 306-933-5290 email: mhitrucking@gov.sk.ca



Winter Weight Season

- █ In Effect
- █ Not In Effect
- █ Future Restrictions

Spring Weight Season

- █ No Restrictions
- █ Restricted
- █ Future Restrictions

Special Weight Restrictions

- █ Special Weight Restrictions

Notes