

## SPRING ROAD RESTRICTIONS

**Fourth Order 2025**

### **Minister's Order Pursuant to section 35(1) of "The Highways and Transportation Act, 1997"**

Pursuant to section 35(1) of "*The Highways and Transportation Act, 1997*" it is hereby ordered that, effective as stated in this Order, **at 12:01 am, Monday March 31, 2025** until further notice, vehicles other than those exempted in Part II, section 3 (2) and 3 (5) of "*The Vehicle Weight and Dimensions Regulations, 2010*", shall be restricted as follows:

#### **Steering Axle**

- 10.0 kg per mm (560 pounds per inch) width of tire (manufacturer's stamped dimension) to a maximum of
- 5,500 kg on the steering axle for a truck or truck tractor equipped with a single steering axle.
- 11,000 kg on the steering axle group for a truck or truck tractor equipped with a tandem axle steering group.

#### **Other Axles**

- 6.25 kg per mm (350 pounds per inch) width of tire (manufacturer's stamped dimension) to a maximum of:
- 1,650 kg (3,638 pounds) per tire, or
- 2,630 kg per tire for axles equipped with single tires with a width of 445 mm or greater.

This order does not permit the weight on any axle, axle group or vehicle from exceeding the maximum weight prescribed in the "*The Vehicle Weight and Dimension Regulations, 2010*" for that axle, axle group or vehicle.

The restriction does not apply to:

- Emergency vehicles,
- Ministry of Highways vehicles and municipal maintenance equipment when conducting maintenance or accessing sites on or along the restricted highway,
- SaskPower, SaskEnergy and SaskTel vehicles when accessing sites along the restricted route,
- Recreational vehicles,
- Buses,
- Farm Equipment operated or towed,
- Vehicles directly crossing a Provincial Highway at an intersecting public highway or private road.

Please note that some provincial highways and bridges are subject to special reduced or restricted weights and some are for specific periods of the year, some for precise temperatures. A detailed description of these special restrictions is listed on the last four pages of this Order.

The following Rural Municipalities **will be removed** from Spring Road Restrictions **immediately upon post this Order.**

**RM No.**

99	CALEDONIA
163	WHEATLANDS
290	KINDERSLEY

The following Provincial Highways **will be** subject to Spring Road Restrictions **at 12:01 am, Monday March 31, 2025.**

No. 5	From Manitoba Border to Jct Hwy 57	No. 52	From Homefield to Jct Hwy 15
No. 8	<b>From Norquay to 14.6 km. South of Forest Boundary (SPECIAL RESTRICTIONS -8,000kgs from Midnight Mar. 14 to Midnight Nov. 15)</b>	No. 80	From K-1 Mine Access to Churchbridge
No. 15	From Jct Hwy 16 to Jct Hwy 9 (SPECIAL RESTRICTION – 8,000kgs)	No. 80	<b>From North town limits of Churchbridge to Jct Hwy 10 (SPECIAL RESTRICTION – 8,000kgs)</b>
No. 15	From Jct Hwy 2 to 27.8 km West	No. 201	From 500 m North of Jct Hwy 1 to Jct Hwy 247
No. 15	From Farrerdale to Jct Hwy 11	No. 211	From Jct Hwy 11 to Blackstrap
No. 20	From Middle Lake to Jct Hwy 320	No. 212	From Jct Hwy 11 to Fort Carlton Park
No. 20	From 1.6 km North of Pilger to Middle Lake	No. 225	Hwy 225 from jct. of hwy 2 from Grid Road is spring road bans and from Grid to hwy 312.
No. 22	From Manitoba Border to South Jct Hwy 8	No. 225	Hwy 225 from it's junction rural municipal road at the E of the NE7-44-27-W2 (east of St. Isidore-de-Bellevue) to the junction with the rural municipal road at the E. of the NE11-27-28-W2. (MO/3-969-2021-WI1) to is 9-month primary.
No. 22	From Jct Hwy 9 to Jct Hwy 47	No. 229	From Jct Hwy 9 to Jct Hwy 47
No. 22	From Jct Hwy 47 to East Jct grid 617	No. 247	From Jct Hwy 9 to Jct Hwy 47
No. 42	From Riverhurst Ferry to Jct Hwy 373	No. 310	From Jct Hwy 52 to Grid 743
No. 42	<b>From Jct Hwy 373 to Lucky Lake (SPECIAL RESTRICTION – 8,000kgs)</b>	No. 310	<b>From Jct Grid 743 to Jct Hwy 16 (SPECIAL RESTRICTION – 8,000kgs)</b>
No. 42	From Lucky Lake to Jct Hwy 342	No. 310	From Jct Hwy 16 to Jct Hwy 5
No. 42	From its Jct with Hwy 44 (km 43.68) to its Jct with Hwy 15 (km 59.92), for a total of 16.2 km. (SPECIAL RESTRICTION – 8,000kgs)	No. 312	From Wakaw to Rosthern
No. 44	<b>From Jct Hwy 19 to Danielson Provincial Park Access (SPECIAL RESTRICTION – 8,000kgs)</b>	No. 320	From Jct Hwy 20 to Domremy
No. 44	From Hwy 44 from 1.12km west of the junction of Hwy 219 to Hwy 45	No. 349	From Jct Hwy 35 to 15 km East of Naicam
No. 44	From Dinsmore east to Macrorie	No. 357	From Togo to Jct Hwy 8
No. 45	From Birsay to Jct Hwy 15	No. 365	From Manitou Beach to Plunkett
No. 45	From 8 kms South of Swanson to Delisle	No. 373	From Jct Hwy 42 to Birsay
No. 47	From Willowbrook to Buchanan		
No. 47	From 1 km North of Buchanan to Preeceville		
No. 52	From Willowbrook to Homefield		

The following Access Roads **will be** subject to Spring Road Restrictions **at 12:01 am, Monday March 31, 2025.**

No. 2	Imperial Access	No. 2	Meacham Access
No. 2	Simpson Access	No. 2	Dana Access

No. 2	Wakaw Lake Park Access	No. 16	Jansen Access
No. 2	Cudworth Access	No. 16	Guernsey Access
No. 5	Veregin Access	No. 16	Plunkett Access
No. 5	Mikado Access	No. 16	Viscount Access
No. 5	Kuroki Access	No. 16	Bradwell Access ( <i>SPECIAL RESTRICTION – 8,000kgs</i> )
No. 5	From Leroy to 6.45 kms West	No. 16	Dalmeny Access from Jct 16 to Jct 305
No. 5	St. Gregor Access	No. 19	Strongfield Access
No. 5	Peterson Access	No. 19	Hawarden Access
No. 5	St. Denis Access	No. 20	Middle Lake Access
No. 8	Wroxton Access	No. 20	St. Benedict Access
No. 9	Dubuc Access	No. 20	Tway Access
No. 9	Crystal Lake Access	No. 22	Atwater Access
No. 9	Ebenezer Access	No. 22	Grayson Access
No. 9	Endeavour Access	No. 22	Gerald Access
No. 9	Gorlitz Access	No. 23	Caragana Access
No. 9	Tadmore Access	No. 27	Aberdeen Access
No. 11	Kenaston bypass/alternate	No. 35	Wishart Access
No. 11	Hanley Access	No. 41	Hwy 41 North to Aberdeen
No. 11	Dundurn Access	No. 45	Coteau Beach Access
No. 11	Gruenthal Access	No. 49	Hazel Dell Access
No. 11	Blumenthal Access	No. 49	Hyas Access
No. 11	Neunlage Access	No. 49	Stenen Access
No. 12	Hepburn Access ( <i>SPECIAL RESTRICTION – 8,000kgs</i> )	No. 80	Yarbo Access
No. 12	Gruenfeldt Access	No. 219	Glenside Access
No. 12	Waldheim Access ( <i>SPECIAL RESTRICTION – 8,000kgs</i> )	No. 219	Riverside Estate Access
No. 15	Service Road – All thin membrane surfaced roads from Fenwood to Leross	No. 219	Furdale Access
No. 15	Punnichy Access	No. 312	Laird Access ( <i>SPECIAL RESTRICTION – 8,000kgs</i> )
No. 15	Conquest Access	No. 349	Saint-Front Access

**The following Rural Municipalities will be subject to Spring Road Restrictions at 12:01 am, Monday March 31, 2025.**

181	LANGENBURG	248	TOUCHWOOD	282	MCCRANEY
184	GRAYSON	251	BIG ARM	283	ROSEDALE
185	MCLEOD	255	COTEAU	284	RUDY
214	CANA	271	COTE	285	FERTILE VALLEY
215	STANLEY	273	SLIDING HILLS	301	ST. PHILIPS
217	LIPTON	274	GOOD LAKE	303	KEYS
241	CALDER	275	INSINGER	304	BUCHANAN
243	WALLACE	276	FOAM LAKE	307	ELFROS
244	ORKNEY	277	EMERALD	309	PRAIRIE ROSE
245	GARRY	280	WREFORD	310	USBORNE
246	ITUNA BON ACCORD	281	WOOD CREEK	312	MORRIS

313 LOST RIVER  
314 DUNDURN  
315 MONTROSE  
333 CLAYTON  
334 PREECEVILLE  
335 HAZEL DELL  
336 SASMAN  
338 LAKESIDE  
339 LEROY  
340 WOLVERINE

341 VISCOUNT  
343 BLUCHER  
344 CORMAN PARK  
345 VANSKOY  
366 KELVINGTON  
368 SPALDING  
369 ST. PETER  
370 HUMBOLDT  
371 BAYNE  
372 GRANT

373 ABERDEEN  
395 PORCUPINE  
399 LAKE LENORE  
400 THREE LAKES  
401 HOODOO  
402 FISH CREEK  
403 ROSTHERN  
431 ST. LOUIS

Signed on behalf of the Minister on this 28<sup>th</sup> day of March 2025.



Lana Eering  
Government of Saskatchewan  
Ministry of Highways  
Manager, Highway Hotline/Emergency Planning Officer

**The following Provincial Highways are subject to Spring Road Restrictions.**

No. 2	From U.S. Border to St. Victor Access	No. 58	From N limits of Gravelbourg to Jct Hwy 1
No. 13	Cadillac to Junction 37	No. 99	From Craven to Jct Hwy 6
No. 13	North Jct Hwy 21 to Alberta Border	No. 202	Jct Hwy 2 to Buffalo Pound Park
No. 18	From Ponteix Grid to Jct. 13 at Robsart	No. 220	From Jct Hwy 20 to Jct 322
No. 18	From Jct Hwy 2 to Ponteix Grid	No. 221	Jct Hwy 21 to Cypress Hills Park Gate
	From West Jct Hwy 36 to Rockglen	No. 271	Maple Creek (Jct Hwy 21) to Fort Walsh
No. 18	From Jct Hwy 6 to East Jct Hwy 36	No. 301	From Jct Hwy 1 from 200 metres north of the bridge to Buffalo Pound Park
No. 18	From Jct Hwy 35 to Jct Hwy 6	No. 306	From Jct Hwy 35 to Riceton
No. 19	From East Jct Hwy 42 to Elbow Access	No. 306	From Riceton to Jct Hwy 6 ( <i>SPECIAL RESTRICTION – 8,000kgs</i> )
No. 19	From Jct Hwy 18 to North Jct Hwy 363	No. 307	From Jct Hwy 7 to 13 km North of Jct Hwy 7
No. 21	U.S. Border to West Jct Hwy 13	No. 308	From Jct Hwy 8 to Grid 600 ( <i>SPECIAL RESTRICTION – 8,000kgs</i> )
No. 21	East Jct Hwy 13 to Cypress Park Entrance	No. 308	From Grid 600 to Manitoba Border
No. 21	Jct Hwy 1 to 12 km South of Leader	No. 317	From Jct 51 to 12 KM North
No. 22	From Earl Grey to Jct Hwy 20	No. 318	From 2 km N of Jct Hwy 18 to Jct Hwy 361
No. 28	From Jct Hwy 18 to Jct Hwy 377	No. 321	Liebenthal (Jct Hwy 21) to 7 km East of the Alberta Border
No. 30	From Eston Regional Park to Brock ( <i>SPECIAL RESTRICTION – 8,000kgs</i> )	No. 332	Jct Hwy 32 to 7.1 km West of Jct Hwy 32
No. 31	From Jct Hwy 4 to 23.1 km west ( <i>SPECIAL RESTRICTION – 8,000kgs</i> )	No. 332	7.1 km West of Jct Hwy 32 to Hazlet ( <i>SPECIAL RESTRICTION – 8,000kgs</i> )
No. 31	From Herschel to grid 656	No. 324	From Jct Hwy 378 to Mayfair
No. 31	From 29.6 km East of Plenty to Plenty ( <i>SPECIAL RESTRICTION – 8,000kgs</i> )	No. 334	From Jct Hwy 13 to 3.3 km south of Jct Hwy 339 ( <i>SEE SPECIAL RESTRICTION 8,000 Kgs</i> )
No. 34	From U.S. Border to Jct Hwy 13	No. 339	From Jct Hwy 334 to Jct Hwy 39 ( <i>SEE SPECIAL RESTRICTION 8,000 Kgs</i> )
No. 35	From Jct Hwy 48 to Jct Hwy 1	No. 340	From Radisson to Hafford
No. 35	From 3.8 km North of Jct Hwy 1 to Jct Hwy 10	No. 342	From Jct Hwy 42 to Jct Hwy 4
No. 35	From Jct Hwy 306 to Jct Hwy 33	No. 342	From Jct Hwy 4 to Grid 647 ( <i>north of Lacadena</i> ) ( <i>SPECIAL RESTRICTION – 8,000kgs</i> )
No. 35	From Jct Hwy 33 to Jct Hwy 48	No. 343	Jct Hwy 4 to Simmie
No. 35	From 3.8 km North of Jct Hwy 1 to Jct Hwy 10	No. 350	From U.S. Border to Jct Hwy 18
No. 36	From U.S. Border to Jct Hwy 2	No. 358	From Wood Mountain to Limerick
No. 37	U.S. Border to Climax	No. 361	From Manitoba Border to Jct 9
No. 37	2.35 km North of Gull Lake to Cabri	No. 363	From 43 km West of Moose Jaw to Neidpath
No. 42	from the Jct of 367 to the Jct North Jct of 19.	No. 363	Neidpath to Jct Hwy 4
No. 42	From Jct Hwy 342 to Dinsmore	No. 364	From Km 19.08 to Km 36.45
No. 43	From Jct Hwy 4 to Jct Hwy 19	No. 367	From Jct Hwy 42 to Jct Hwy 19
No. 44	South Jct Hwy 21 to 3.33 km West of Mantario ( <i>SPECIAL RESTRICTION – 8,000kgs</i> )	No. 371	Jct Hwy 21 to Alberta Border ( <i>SPECIAL RESTRICTION – 8,000kgs</i> )
No. 44	3.33 kms West of Mantario to Alsask	No. 374	From Jct Hwy 14 to Tramping Lake
No. 44	From 3 km south-west of Davidson (Meridian Road) to Jct. Hwy 19 ( <i>SPECIALRESTRICTION – 8,000kgs</i> )	No. 376	From Asquith to Jct Hwy 40
No. 44	From Dinsmore to Jct Hwy 4	No. 377	From Jct Hwy 28 to Jct Hwy 6
No. 44	From 3.2 Km's West of Eston to N. Jct. of 21	No. 378	From Jct Hwy 4 to Jct Hwy 324
No. 44	From 400 Meters West of the North Jct Hwy 21 to the South Jct Hwy 21	No. 379	McMahon to 14.66 km East of Junction No. 4
No. 47	From Handsworth Road to Jct Hwy 1		
No. 58	From Jct Hwy 18 to Jct Hwy 13		

**The following Access Roads are subject to Spring Road Restrictions.**

No. 1	Sintaluta Access	No. 19	Kincaid Access
No. 1	McLean Park Access	No. 20	Duval Access
No. 1	Grand Coulee Access ( <i>SPECIAL RESTRICTION – 8,000kgs</i> )	No. 20	Bulyea Access
No. 1	North urban limits of Pense	No. 21	Golden Prairie Access
No. 1	Rush Lake Access	No. 21	Mendham Access ( <i>JCT 21 to 8.1 KM West</i> ) ( <i>SPECIAL RESTRICTION – 8,000kgs</i> )
No. 1	Waldeck Access	No. 22	Dysart Access
No. 1	Webb Access from Km 0 to 1.87 Km	No. 22	Earl Grey Service Road
No. 1	Tompkins Access	No. 31	Herschel Access
No. 1	Piapot Access	No. 33	Osage Access Road
No. 2	Sun Valley Beach Access	No. 39	Mc Taggart Service Road
No. 2	Holdfast Access	No. 39	Wilcox Service Road
No. 2	Penzance Access	No. 39	Roche Percee Access
No. 2	Liberty Access	No. 40	Speers Access
No. 4	Cando Access	No. 40	David Laird Campground Access ( <i>YEAR ROUND RESTRICTION – 8,000kgs</i> )
No. 4	Metinota Access	No. 43	Palmer Access
No. 4	Blumehof Access ( <i>SPECIAL RESTRICTION – 8,000kgs</i> )	No. 44	Plato Access
No. 4	Rhineland Access	No. 44	Glidden Access
No. 4	Aquadeo Access	No. 48	Fairlight Access
No. 8	Tantallon Access ( <i>SPECIAL RESTRICTION – 8,000kgs</i> )	No. 48	Kendal Service Road
No. 11	Bethune Access	No. 48	Odessa Service Road
No. 11	Findlater Access	No. 48	Vibank Service Road
No. 11	Findlater Service Road	No. 51	Handel Access
No. 11	Aylesbury Access	No. 51	Ruthilda Access
No. 11	Craik Access	No. 51	Major Access
No. 11	Girvin Access	No. 322	Kanata Valley Access
No. 11	Davidson South	No. 322	Saskatchewan Beach Access
No. 13	Pangman Access	No. 363	Coderre Access
No. 13	Khediye Access	No. 363	Shamrock Access
No. 13	Trossachs Access	No. 364	Edenwold Access
No. 13	Bellegarde Access ( <i>SPECIAL RESTRICTION – 8,000kgs</i> )		
No. 13	Arcola Access		
No. 13	Forget Access ( <i>SPECIAL RESTRICTION – 8,000kgs</i> )		
No. 14	Senlac Access		
No. 15	Milden Access		
No. 15	Sovereign Access		
No. 15	Semans Access		
No. 18	Beaubier		
No. 18	Gladmar Access		
No. 18	Big Beaver Access		
No. 18	McCord Access		

**The following Rural Municipalities are subject to Spring Road Restrictions**

6	CAMBRIA	122	MARTIN	228	LACADENA
7	SOURIS VALLEY	123	SILVERWOOD	229	MIRY CREEK
8	LAKE ALMA	124	KINGSLEY	230	CLINTWORTH
10	HAPPY VALLEY	125	CHESTER	231	HAPPYLAND
11	HART BUTTE	126	MONTMARTRE	232	DEER FORKS
12	POPLAR VALLEY	127	FRANCIS	250	LAST MOUNTAIN VALLEY
18	LONE TREE	128	LAJORD	256	KING GEORGE
19	FRONTIER	129	BRATT'S LAKE	260	NEWCOMBE
38	LAURIER	132	HILLSBOROUGH	279	MOUNT HOPE
40	BENGOUGH	133	RODGERS	288	PLEASANT VALLEY
42	WILLOW BUNCH	134	SHAMROCK	316	HARRIS
43	OLD POST	135	LAWTONIA	317	MARRIOTT
45	MANKOTA	136	COULEE	319	WINSLOW
46	GLEN MCPHERSON	137	SWIFT CURRENT	320	OAKDALE
49	WHITE VALLEY	138	WEBB	321	PRAIRIEDALE
51	RENO	139	GULL LAKE	346	PERDUE
64	BROCK	142	ENTERPRISE	347	BIGGAR
65	TECUMSEH	151	ROCANVILLE	349	GRANDVIEW
67	WEYBURN	153	WILLOWDALE	350	MARIPOSA
68	BROKENSHELL	154	ELCAPO	351	PROGRESS
69	NORTON	155	WOLSELEY	352	HEART'S HILL
70	KEY WEST	156	INDIAN HEAD	376	EAGLE CREEK
71	EXCEL	157	SOUTH QU'APPELLE	377	GLENSIDE
72	LAKE OF THE RIVERS	158	EDENWOLD	378	ROSEMOUNT
73	STONEHENGE	159	SHERWOOD	379	REFORD
74	WOOD RIVER	161	MOOSE JAW	380	TRAMPING LAKE
76	AUVERGNE	164	CHAPLIN	381	GRASS LAKE
77	WISE CREEK	165	MORSE	382	EYE HILL
79	ARLINGTON	166	EXCELSIOR	405	GREAT BEND
94	HAZELWOOD	167	SASKATCHEWAN LANDING	406	MAYFIELD
95	GOLDEN WEST	169	PITTEVILLE	409	BUFFALO
96	FILLMORE	187	NORTH QU'APPELLE	410	ROUND VALLEY
97	WELLINGTON	189	LUMSDEN	411	SENLAC
101	TERRELL	190	DUFFERIN	436	DOUGLAS
102	LAKE JOHNSTON	191	MARQUIS	437	NORTH BATTLEFORD
103	SUTTON	193	EYEBROW	438	BATTLE RIVER
104	GRAVELBOURG	194	ENFIELD	440	HILLSDALE
105	GLEN BAIN	216	TULLYMET	468	MEOTA
106	WHISKA CREEK	218	CUPAR	470	PAYNTON
107	LAC PELLETIER	219	LOGLAKETON	494	CANWOOD
108	BONE CREEK	220	MCKILLOP		
109	CARMICHAEL	223	HURON		
110	PIAPOT	224	MAPLE BUSH		
111	MAPLE CREEK	225	CANAAN		
121	MOOSOMIN	226	VICTORY		

The following section is not part of the Order but is appended as **INFORMATION:**  
**Special Weight Restrictions on Selected Provincial Highways.**

The following highways are subject to reduced weights, year round, by regulation in accordance with the *Vehicle Weight and Dimension Regulations, 2010*

Hwy	From	To	Description
955	South abutment of the Douglas River Bridge	Northern most limit of Highway 955	Maximum GVW 41 500 kg

The following **BRIDGES** are restricted by Minister's **ORDER** to a maximum gross vehicle weight of **Secondary Weights** year-round. **Winter Weights** are not allowed.

Hwy	Bridge Location Description
2	Bridge over Little Red River from Southern Bridge Abutment to Northern Bridge Abutment. Bridge is located approximately 4.4 km south of Jct. with Hwy 355 and Hwy 2 near Spruce Home. <b>Bridge is located on East Frontage Road.</b>
3	Bridge over Red Deer River from Eastern Bridge Abutment to Western Bridge Abutment located approximately .5km west of Erwood, Sk.
4 Metinota Access	Bridge over Jackfish Narrows from Eastern Bridge Abutment to Western Bridge Abutment. Bridge is located in access road approximately 3.1km west of the Jct. with Hwy 4. <b>Bridge is located on access road.</b>
312 Gabriel Dumont Bridge	Truss Bridge over South Saskatchewan River from Eastern Bridge Abutment to Western Bridge Abutment.
334	Bridge over Willow Creek from Eastern Bridge Abutment to Western Bridge Abutment. Bridge is located approximately 18.6 km east of Avonlea, sk. and the Jct. with Hwy 339 and Hwy 334.
919	Bridge over Martineau River from Southern Bridge Abutment to Northern Bridge Abutment. Bridge is located approximately 39.5km northwest of the Jct. with Hwy 21 and Hwy 950
935	Bridge over Morin River from the Southern Bridge Abutment to the Northern Bridge Abutment. Bridge is located approximately 7km north of the Jct. with Hwy 165 and Hwy 935.
955 Clearwater Truss Bridge	Truss Bridge over Clearwater River from Southern Bridge Abutment to Northern Bridge Abutment. Bridge is located approximately - 62 km north of Jct 155 and 955 to the Clearwater Bridge.
980 Elbow Lake Access	Bridge over Midnight Creek from Eastern Bridge Abutment to Western Bridge Abutment. Bridge is located approximately .3 km west of Elbow Lake, Sk.. <b>The bridge is located on Spirit Lake/Elbow Lake access road.</b>

The following **BRIDGES** are restricted by Minister's **ORDER** to a maximum gross vehicle weight of **Primary Weights** year-round. **Winter Weights** are not allowed.

Hwy	Bridge Location Description
2	Northbound Bridge over Hwy 1 from Southern Bridge Abutment to Northern Bridge Abutment. Bridge is located North of Moose Jaw at Jtc. with Hwy 1 and Hwy 2
2	Southbound Bridge over Hwy 1 from Southern Bridge Abutment to Northern Bridge Abutment. Bridge is located north of Moose Jaw Sk. at Jtc. with Hwy 1 and Hwy 2
6	Bridge over Barrier River Overflow from Southern Bridge Abutment to Northern Bridge Abutment. Bridge is located approximately 25.7 km south of Melfort, Sk.



The following highways are restricted by Minister's ORDER to a maximum gross vehicle weight of 8 000 kilograms year round.

Highway	From	To
1 Caron Access	Jct Hwy 1	Hamlet of Caron
1 Grand Coulee Access	Jct Hwy 1	Village of Grand Coulee
2 Eastside Service Road near Prince Albert	Jct Boundary Street East Service Rd north	Jct Township Road (approx. 2.4 kms)
4 Blumenhof Access	Jct Hwy 4 east	Blumenhof
6 Leroy Access	Jct Hwy 6	Town of Leroy
8 Tantallon Access	Jct. Hwy 8	Village of Tantallon
12 Hepburn Access	Jct. Hwy 12	Village of Hepburn
12 Waldheim Access	Jct. Hwy 12	100 meters west of the west boundary of NW 15-42-5 W3M in the town of Waldheim.
13 Bellegarde Access	Jct. Hwy 13	Bellegarde
13 Forget Access	Jct. Hwy 13	The Village of Forget
15	Jct. Hwy 16	Jct. Hwy 9
16 Bradwell Access	Jct. Hwy 16	Village of Bradwell
21 Mendham Access	Jct Hwy 21 Mendham Access	Intersection with the North-South portion of the Municipal Alternate Truck Route
30	Eston Regional Park located at the southwest corner of Section 20, Township 23, Range 20, West 3rd Meridian	The jct. of municipal Hwy located at the north-east corner of Section 34, Township 28, Range 20, West 3rd Meridian
31	Jct. Hwy 4	Herschel Access Road
31	Grid 656 at NW corner of Section 34, Township 31, Range 17, west of the 3rd Meridian	The intersection of the Plenty grid at the NW corner, Section 21, Township 32, Range 19, west of the 3rd Meridian
39 Bienfait Access	Jct Hwy 39	Jct Hwy 18 (In the Town of Bienfait)
40 David Laird Campsite Road	Jct No. Hwy 40	Jct Hwy No. 16
41 Alvena Access	Jct Hwy 41	2nd Avenue in Village of Alvena
42	Jct Hwy 42 - Keeler Service Road/Railway Ave. S.	Keeler Service Road/Railway Ave. to RM Road 643
42 (1)	Jct Hwy 373	Jct Hwy 45 in the Town of Lucky Lake

42	From its Jct with Hwy 44 (km 43.68)	its Jct with Hwy 15 (km 59.92), for a total of 16.2 km.
44(1)	<i>Jct Hwy 19</i>	<i>Junction with the Danielson Provincial Park Access located in the southeast of Section 32, Township 26, Range 6, West of the 3rd Meridian.</i>
44(1)	<i>Jct Hwy 21</i>	<i>Westerly to the Jct with the municipal road located in the NE 1/4 of Section 24, Township 26, Range 27, west of the 3rd Meridian</i>
44(1)	<i>Jct with the municipal road located at the SW 1/4 of Section 26, Township 26, Range 27, west of the 3rd Meridian</i>	<i>Jct with the municipal road located east of Section 31, Township 26, Range 27, west of the 3rd Meridian</i>
306	Riceton	Jct Hwy 6
308	Jct Hwy 8	Jct with Primary Grid 600
310	Jct of Grid 743	Jct of Hwy No. 16
312 Laird Access	Jct Hwy 312	The Village of Laird
332	7.1 km west of Jct Hwy 32	The Village of Hazlet except for that portion between the east and west Jct of Hwy 37
334	Jct Hwy 13	3.3 km south of Jct Hwy 339
339	Village of Avonlea	Jct. of Hwy 39 except for that portion from 11.4 km west of Avonlea to 21.2 km west of Avonlea
342	Jct Hwy 4	Jct of Primary Grid 647 north of Lacadena
371	Jct Hwy 21	Alberta Border

**The following highways are restricted by Minister's ORDER to a maximum gross vehicle weight of 8 000 kilograms from March 1<sup>st</sup> to November 30<sup>th</sup> each year.**

<b>Hwy</b>	<b>From</b>	<b>To</b>
302	Cecil Ferry Road at the SE corner of Section 22, Township 48, Range 24, west of the 2nd Meridian	Jct of the municipal road located at SE corner of Section 5, Township 49, Range 22, west of second Meridian (located by the Weldon Ferry)

**The following access road is restricted by Minister's ORDER to a maximum gross vehicle weight of 8 000 kilograms from March 1<sup>st</sup> to November 30<sup>th</sup> each year.**

<b>Hwy</b>	<b>From</b>	<b>To</b>
2 Paddockwood Access	Jct Hwy 2	Grid Road intersection NE Section 23, Township 52, Range 25, W2nd Meridian

The following highway is restricted by Minister's ORDER to a maximum gross vehicle weight of 8 000 kilograms from March 15<sup>th</sup> to November 15<sup>th</sup> each year and *when the ambient temperature is above -6°C*.

Hwy	From	To
8	0.5 km North of Junction Highway 49 at Norquay	The community of Swan Plain at the south boundary of SE 27-36-1-W2M

The following Access Road is restricted by Minister's ORDER to a maximum gross vehicle weight of 8 000 kilograms from February 24 to November 15<sup>th</sup> each year and *when the ambient temperature is above -6°C*.

Hwy	From	To
35 Aylsham Access	Hwy 35 (NW corner of section 32, township 48, range 14, west of second Meridian)	Aylsham (NE corner of section 34, township 48, range 13, west of second Meridian)

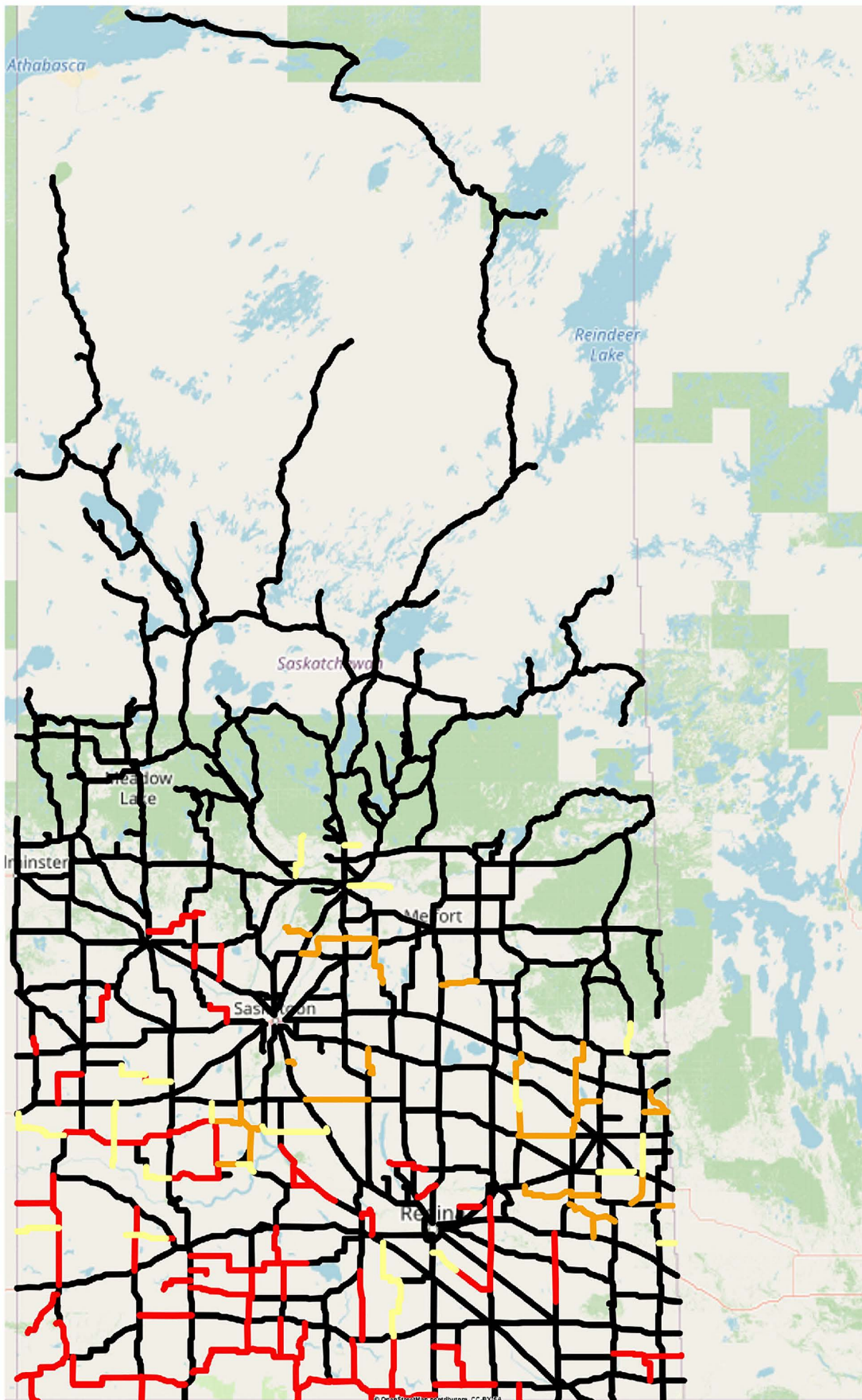
The following highway is restricted by Minister's ORDER to a maximum gross vehicle weight of 75% of primary highway weights, except during winter weight season, when winter secondary weights shall apply.

Hwy	From	To
240	Junction Highway 55	No. 240 - From Jct Hwy 55 to Prince Albert National Park SPECIAL RESTRICTIONS – 4.5 kg per mm (252 lbs/in) width of tire (manufacturer's stamped dimension) on any wheel to a maximum GVW of 22,686 kg (50,000 lbs), including the steering axle.

For detailed information on Rural Roads, call the local rural municipality or for Provincial Highway information email the Highway Hotline [hotline@gov.sk.ca](mailto:hotline@gov.sk.ca). The rural municipality administers and maintains the alternate haul routes. They are also responsible for issuing any overweight permits associated with the alternate haul routes.

Saskatchewan Ministry of Highways and Infrastructure provides seasonal highway restriction information on the Internet at: <http://www.saskatchewan.ca/truckingweights> under Special Weights.

Truckers can also contact the Saskatchewan Ministry of Highways, Trucking inquiry line at Toll free in Saskatchewan: 1-866-933-5290 Out of Saskatchewan: 306-933-5290 email: [mhitrucking@gov.sk.ca](mailto:mhitrucking@gov.sk.ca)



**Winter Weight Season**

- █ In Effect
- █ Not In Effect
- █ Future Restrictions

**Spring Weight Season**

- █ No Restrictions
- █ Restricted
- █ Future Restrictions

**Special Weight Restrictions**

- █ Special Weight Restrictions

Notes