

SPRING ROAD RESTRICTIONS

Third Order 2025

Minister's Order Pursuant to section 35(1) of "The Highways and Transportation Act, 1997"

Pursuant to section 35(1) of "*The Highways and Transportation Act, 1997*" it is hereby ordered that, effective as stated in this Order, **at 12:01 am, Friday March 28, 2025** until further notice, vehicles other than those exempted in Part II, section 3 (2) and 3 (5) of "*The Vehicle Weight and Dimensions Regulations, 2010*", shall be restricted as follows:

Steering Axle

- 10.0 kg per mm (560 pounds per inch) width of tire (manufacturer's stamped dimension) to a maximum of
- 5,500 kg on the steering axle for a truck or truck tractor equipped with a single steering axle.
- 11,000 kg on the steering axle group for a truck or truck tractor equipped with a tandem axle steering group.

Other Axles

- 6.25 kg per mm (350 pounds per inch) width of tire (manufacturer's stamped dimension) to a maximum of:
- 1,650 kg (3,638 pounds) per tire, or
- 2,630 kg per tire for axles equipped with single tires with a width of 445 mm or greater.

This order does not permit the weight on any axle, axle group or vehicle from exceeding the maximum weight prescribed in the "*The Vehicle Weight and Dimension Regulations, 2010*" for that axle, axle group or vehicle.

The restriction does not apply to:

- Emergency vehicles,
- Ministry of Highways vehicles and municipal maintenance equipment when conducting maintenance or accessing sites on or along the restricted highway,
- SaskPower, SaskEnergy and SaskTel vehicles when accessing sites along the restricted route,
- Recreational vehicles,
- Buses,
- Farm Equipment operated or towed,
- Vehicles directly crossing a Provincial Highway at an intersecting public highway or private road.

Please note that some provincial highways and bridges are subject to special reduced or restricted weights and some are for specific periods of the year, some for precise temperatures. A detailed description of these special restrictions is listed on the last four pages of this Order.

The following Rural Municipalities **will be subject to** Spring Road Restrictions **immediately upon post this Order.**

RM No.

79 ARLINGTON

The following Rural Municipalities **will be subject to** Spring Road Restrictions **at 12:01 am, Friday March 28, 2025.**

RM No.

122 Martin

The following Rural Municipalities **will be removed** from Spring Road Restrictions **immediately upon post this Order.**

RM No.

292 MILTON

322 ANTELOPE PARK

The following Rural Municipalities **will be removed** from Spring Road Restrictions **at 12:01 am, Friday March 28, 2025.** (RM's that have opted out will no longer appear in the Order)

RM No.

9 SURPRISE VALLEY

91 MARYFIELD

92 WALPOLE

93 WAWKEN

RM No.

98 SCOTT

286 MILDEN

318 MOUNTAIN VIEW

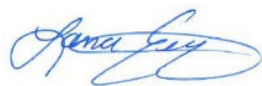
435 REDBERRY

RM No.

442 MANITOU LAKE

502 BRITANNIA

Signed on behalf of the Minister on this 25th day of March 2025.



Lana Eering
Government of Saskatchewan
Ministry of Highways
Manager, Highway Hotline/Emergency Planning Officer

The following Provincial Highways are subject to Spring Road Restrictions.

No. 2	From U.S. Border to St. Victor Access	No. 58	From N limits of Gravelbourg to Jct Hwy 1
No. 13	Cadillac to Junction 37	No. 99	From Craven to Jct Hwy 6
No. 13	North Jct Hwy 21 to Alberta Border	No. 202	Jct Hwy 2 to Buffalo Pound Park
No. 18	From Ponteix Grid to Jct. 13 at Robsart	No. 220	From Jct Hwy 20 to Jct 322
No. 18	From Jct Hwy 2 to Ponteix Grid	No. 221	Jct Hwy 21 to Cypress Hills Park Gate
	From West Jct Hwy 36 to Rockglen	No. 271	Maple Creek (Jct Hwy 21) to Fort Walsh
No. 18	From Jct Hwy 6 to East Jct Hwy 36	No. 301	From Jct Hwy 1 from 200 metres north of the bridge to Buffalo Pound Park
No. 18	From Jct Hwy 35 to Jct Hwy 6	No. 306	From Jct Hwy 35 to Riceton
No. 19	From East Jct Hwy 42 to Elbow Access	No. 306	From Riceton to Jct Hwy 6 (<i>SPECIAL RESTRICTION – 8,000kgs</i>)
No. 19	From Jct Hwy 18 to North Jct Hwy 363	No. 307	From Jct Hwy 7 to 13 km North of Jct Hwy 7
No. 21	U.S. Border to West Jct Hwy 13	No. 308	From Jct Hwy 8 to Grid 600 (<i>SPECIAL RESTRICTION – 8,000kgs</i>)
No. 21	East Jct Hwy 13 to Cypress Park Entrance	No. 308	From Grid 600 to Manitoba Border
No. 21	Jct Hwy 1 to 12 km South of Leader	No. 317	From Jct 51 to 12 KM North
No. 22	From Earl Grey to Jct Hwy 20	No. 318	From 2 km N of Jct Hwy 18 to Jct Hwy 361
No. 28	From Jct Hwy 18 to Jct Hwy 377	No. 321	Liebenthal (Jct Hwy 21) to 7 km East of the Alberta Border
No. 30	From Eston Regional Park to Brock (<i>SPECIAL RESTRICTION – 8,000kgs</i>)	No. 332	Jct Hwy 32 to 7.1 km West of Jct Hwy 32
No. 31	From Jct Hwy 4 to 23.1 km west (<i>SPECIAL RESTRICTION – 8,000kgs</i>)	No. 332	7.1 km West of Jct Hwy 32 to Hazlet (<i>SPECIAL RESTRICTION – 8,000kgs</i>)
No. 31	From Herschel to grid 656	No. 324	From Jct Hwy 378 to Mayfair
No. 31	From 29.6 km East of Plenty to Plenty (<i>SPECIAL RESTRICTION – 8,000kgs</i>)	No. 334	From Jct Hwy 13 to 3.3 km south of Jct Hwy 339 (<i>SEE SPECIAL RESTRICTION 8,000 Kgs</i>)
No. 34	From U.S. Border to Jct Hwy 13	No. 339	From Jct Hwy 334 to Jct Hwy 39 (<i>SEE SPECIAL RESTRICTION 8,000 Kgs</i>)
No. 35	From Jct Hwy 48 to Jct Hwy 1	No. 340	From Radisson to Hafford
No. 35	From 3.8 km North of Jct Hwy 1 to Jct Hwy 10	No. 342	From Jct Hwy 42 to Jct Hwy 4
No. 35	From Jct Hwy 306 to Jct Hwy 33	No. 342	From Jct Hwy 4 to Grid 647 (<i>north of Lacadena</i>) (<i>SPECIAL RESTRICTION – 8,000kgs</i>)
No. 35	From Jct Hwy 33 to Jct Hwy 48	No. 343	Jct Hwy 4 to Simmie
No. 35	From 3.8 km North of Jct Hwy 1 to Jct Hwy 10	No. 350	From U.S. Border to Jct Hwy 18
No. 36	From U.S. Border to Jct Hwy 2	No. 358	From Wood Mountain to Limerick
No. 37	U.S. Border to Climax	No. 361	From Manitoba Border to Jct 9
No. 37	2.35 km North of Gull Lake to Cabri	No. 363	From 43 km West of Moose Jaw to Neidpath
No. 42	from the Jct of 367 to the Jct North Jct of 19.	No. 363	Neidpath to Jct Hwy 4
No. 42	From Jct Hwy 342 to Dinsmore	No. 364	From Km 19.08 to Km 36.45
No. 43	From Jct Hwy 4 to Jct Hwy 19	No. 367	From Jct Hwy 42 to Jct Hwy 19
No. 44	South Jct Hwy 21 to 3.33 km West of Mantario (<i>SPECIAL RESTRICTION – 8,000kgs</i>)	No. 371	Jct Hwy 21 to Alberta Border (<i>SPECIAL RESTRICTION – 8,000kgs</i>)
No. 44	3.33 kms West of Mantario to Alsask	No. 374	From Jct Hwy 14 to Tramping Lake
No. 44	From 3 km south-west of Davidson (Meridian Road) to Jct. Hwy 19 (<i>SPECIALRESTRICTION – 8,000kgs</i>)	No. 376	From Asquith to Jct Hwy 40
No. 44	From Dinsmore to Jct Hwy 4	No. 377	From Jct Hwy 28 to Jct Hwy 6
No. 44	From 3.2 Km's West of Eston to N. Jct. of 21	No. 378	From Jct Hwy 4 to Jct Hwy 324
No. 44	From 400 Meters West of the North Jct Hwy 21 to the South Jct Hwy 21	No. 379	McMahon to 14.66 km East of Junction No. 4
No. 47	From Handsworth Road to Jct Hwy 1		
No. 58	From Jct Hwy 18 to Jct Hwy 13		

The following Access Roads are subject to Spring Road Restrictions.

No. 1	Sintaluta Access	No. 15	Milden Access
No. 1	McLean Park Access	No. 15	Sovereign Access
No. 1	Grand Coulee Access (<i>SPECIAL RESTRICTION – 8,000kgs</i>)	No. 15	Semans Access
No. 1	North urban limits of Pense	No. 18	Beaubier
No. 1	Rush Lake Access	No. 18	Gladmar Access
No. 1	Waldeck Access	No. 18	Big Beaver Access
No. 1	Webb Access from Km 0 to 1.87 Km	No. 18	McCord Access
No. 1	Tompkins Access	No. 19	Kincaid Access
No. 1	Piapot Access	No. 20	Duval Access
No. 2	Sun Valley Beach Access	No. 20	Bulyea Access
No. 2	Holdfast Access	No. 21	Golden Prairie Access
No. 2	Penzance Access	No. 21	Mendham Access (<i>JCT 21 to 8.1 KM West</i>) (<i>SPECIAL RESTRICTION – 8,000kgs</i>)
No. 2	Liberty Access	No. 22	Dysart Access
No. 4	Cando Access	No. 22	Earl Grey Service Road
No. 4	Metinota Access	No. 31	Herschel Access
No. 4	Blumehof Access (<i>SPECIAL RESTRICTION – 8,000kgs</i>)	No. 33	Osage Access Road
No. 4	Rhineland Access	No. 39	Mc Taggart Service Road
No. 4	Aquadeo Access	No. 39	Wilcox Service Road
No. 8	Tantallon Access (<i>SPECIAL RESTRICTION – 8,000kgs</i>)	No. 39	Roche Percee Access
No. 11	Bethune Access	No. 40	Speers Access
No. 11	Findlater Access	No. 40	David Laird Campground Access (<i>YEAR ROUND RESTRICTION – 8,000kgs</i>)
No. 11	Findlater Service Road	No. 43	Palmer Access
No. 11	Aylesbury Access	No. 44	Plato Access
No. 11	Craik Access	No. 44	Glidden Access
No. 11	Girvin Access	No. 48	Fairlight Access
No. 11	Davidson South	No. 48	Kendal Service Road
No. 13	Pangman Access	No. 48	Odessa Service Road
No. 13	Khediye Access	No. 48	Vibank Service Road
No. 13	Trossachs Access	No. 51	Handel Access
No. 13	Bellegarde Access (<i>SPECIAL RESTRICTION – 8,000kgs</i>)	No. 51	Ruthilda Access
No. 13	Arcola Access	No. 51	Major Access
No. 13	Forget Access (<i>SPECIAL RESTRICTION – 8,000kgs</i>)	No. 322	Kanata Valley Access
No. 14	Senlac Access	No. 322	Saskatchewan Beach Access
		No. 363	Coderre Access
		No. 363	Shamrock Access
		No. 364	Edenwold Access

The following Rural Municipalities are subject to Spring Road Restrictions.

6	CAMBRIA	10	HAPPY VALLEY	19	FRONTIER
7	SOURIS VALLEY	11	HART BUTTE	38	LAURIER
8	LAKE ALMA	12	POPLAR VALLEY	40	BENGOUGH
		18	LONE TREE	42	WILLOW BUNCH

43	OLD POST	135	LAWTONIA	288	PLEASANT VALLEY
45	MANKOTA	136	COULEE	290	KINDERSLEY
46	GLEN MCPHERSON	137	SWIFT CURRENT		
49	WHITE VALLEY	138	WEBB	316	HARRIS
51	RENO	139	GULL LAKE	317	MARRIOTT
64	BROCK	142	ENTERPRISE	319	WINSLOW
65	TECUMSEH	151	ROCANVILLE	320	OAKDALE
67	WEYBURN	153	WILLOWDALE	321	PRAIRIEDALE
68	BROKENSHELL	154	ELCAPO		
69	NORTON	155	WOLSELEY	346	PERDUE
70	KEY WEST	156	INDIAN HEAD	347	BIGGAR
71	EXCEL	157	SOUTH QU'APPELLE	349	GRANDVIEW
72	LAKE OF THE RIVERS	158	EDENWOLD	350	MARIPOSA
73	STONEHENGE	159	SHERWOOD	351	PROGRESS
74	WOOD RIVER	161	MOOSE JAW	352	HEART'S HILL
76	AUVERGNE	163	WHEATLANDS	376	EAGLE CREEK
77	WISE CREEK	164	CHAPLIN	377	GLENSIDE
94	HAZELWOOD	165	MORSE	378	ROSEMOUNT
95	GOLDEN WEST	166	EXCELSIOR	379	REFORD
96	FILLMORE	167	SASKATCHEWAN LANDING	380	TRAMPING LAKE
97	WELLINGTON	169	PITTEVILLE	381	GRASS LAKE
99	CALEDONIA	187	NORTH QU'APPELLE	382	EYE HILL
101	TERRELL	189	LUMSDEN	405	GREAT BEND
102	LAKE JOHNSTON	190	DUFFERIN	406	MAYFIELD
103	SUTTON	191	MARQUIS	409	BUFFALO
104	GRAVELBOURG	193	EYEBROW	410	ROUND VALLEY
105	GLEN BAIN	194	ENFIELD	411	SENLAC
106	WHISKA CREEK	216	TULLYMET	436	DOUGLAS
107	LAC PELLETIER	218	CUPAR	437	NORTH BATTLEFORD
108	BONE CREEK	219	LONGLAKETON	438	BATTLE RIVER
109	CARMICHAEL	220	MCKILLOP	440	HILLSDALE
110	PIAPOT	223	HURON	468	MEOTA
111	MAPLE CREEK	224	MAPLE BUSH	470	PAYNTON
121	MOOSOMIN	225	CANAAN	494	CANWOOD
123	SILVERWOOD	226	VICTORY		
124	KINGSLEY	228	LACADENA		
125	CHESTER	229	MIRY CREEK		
126	MONTMARTRE	230	CLINTWORTH		
127	FRANCIS	231	HAPPYLAND		
128	LAJORD	232	DEER FORKS		
129	BRATT'S LAKE	250	LAST MOUNTAIN VALLEY		
132	HILLSBOROUGH	256	KING GEORGE		
133	RODGERS	260	NEWCOMBE		
134	SHAMROCK	279	MOUNT HOPE		

**The following section is not part of the Order but is appended as INFORMATION:
Special Weight Restrictions on Selected Provincial Highways.**

The following highways are subject to reduced weights, year round, by regulation in accordance with the *Vehicle Weight and Dimension Regulations, 2010*

Hwy	From	To	Description
955	South abutment of the Douglas River Bridge	Northern most limit of Highway 955	Maximum GVW 41 500 kg

The following BRIDGES are restricted by Minister's ORDER to a maximum gross vehicle weight of Secondary Weights year-round. Winter Weights are not allowed.

Hwy	Bridge Location Description
2	Bridge over Little Red River from Southern Bridge Abutment to Northern Bridge Abutment. Bridge is located approximately 4.4 km south of Jct. with Hwy 355 and Hwy 2 near Spruce Home. Bridge is located on East Frontage Road.
3	Bridge over Red Deer River from Eastern Bridge Abutment to Western Bridge Abutment located approximately .5km west of Erwood, Sk.
4 Metinota Access	Bridge over Jackfish Narrows from Eastern Bridge Abutment to Western Bridge Abutment. Bridge is located in access road approximately 3.1km west of the Jct. with Hwy 4. Bridge is located on access road.
312 Gabriel Dumont Bridge	Truss Bridge over South Saskatchewan River from Eastern Bridge Abutment to Western Bridge Abutment.
334	Bridge over Willow Creek from Eastern Bridge Abutment to Western Bridge Abutment. Bridge is located approximately 18.6 km east of Avonlea, sk. and the Jct. with Hwy 339 and Hwy 334.
919	Bridge over Martineau River from Southern Bridge Abutment to Northern Bridge Abutment. Bridge is located approximately 39.5km northwest of the Jct. with Hwy 21 and Hwy 950
935	Bridge over Morin River from the Southern Bridge Abutment to the Northern Bridge Abutment. Bridge is located approximately 7km north of the Jct. with Hwy 165 and Hwy 935.
955 Clearwater Truss Bridge	Truss Bridge over Clearwater River from Southern Bridge Abutment to Northern Bridge Abutment. Bridge is located approximately - 62 km north of Jct 155 and 955 to the Clearwater Bridge.
980 Elbow Lake Access	Bridge over Midnight Creek from Eastern Bridge Abutment to Western Bridge Abutment. Bridge is located approximately .3 km west of Elbow Lake, Sk.. The bridge is located on Spirit Lake/Elbow Lake access road.

The following BRIDGES are restricted by Minister's ORDER to a maximum gross vehicle weight of Primary Weights year-round. Winter Weights are not allowed.

Hwy	Bridge Location Description
2	Northbound Bridge over Hwy 1 from Southern Bridge Abutment to Northern Bridge Abutment. Bridge is located North of Moose Jaw at Jtc. with Hwy 1 and Hwy 2
2	Southbound Bridge over Hwy 1 from Southern Bridge Abutment to Northern Bridge Abutment. Bridge is located north of Moose Jaw Sk. at Jtc. with Hwy 1 and Hwy 2
6	Bridge over Barrier River Overflow from Southern Bridge Abutment to Northern Bridge Abutment. Bridge is located approximately 25.7 km south of Melfort, Sk.

The following highways are restricted by Minister's ORDER to a maximum gross vehicle weight of 8 000 kilograms year round.

Highway	From	To
1 Caron Access	Jct Hwy 1	Hamlet of Caron
1 Grand Coulee Access	Jct Hwy 1	Village of Grand Coulee
2 Eastside Service Road near Prince Albert	Jct Boundary Street East Service Rd north	Jct Township Road (approx. 2.4 kms)
4 Blumenhof Access	Jct Hwy 4 east	Blumenhof
6 Leroy Access	Jct Hwy 6	Town of Leroy
8 Tantallon Access	Jct. Hwy 8	Village of Tantallon
12 Hepburn Access	Jct. Hwy 12	Village of Hepburn
12 Waldheim Access	Jct. Hwy 12	100 meters west of the west boundary of NW 15-42-5 W3M in the town of Waldheim.
13 Bellegarde Access	Jct. Hwy 13	Bellegarde
13 Forget Access	Jct. Hwy 13	The Village of Forget
15	Jct. Hwy 16	Jct. Hwy 9
16 Bradwell Access	Jct. Hwy 16	Village of Bradwell
21 Mendham Access	Jct Hwy 21 Mendham Access	Intersection with the North-South portion of the Municipal Alternate Truck Route
30	Eston Regional Park located at the southwest corner of Section 20, Township 23, Range 20, West 3rd Meridian	The jct. of municipal Hwy located at the north-east corner of Section 34, Township 28, Range 20, West 3rd Meridian
31	Jct. Hwy 4	Herschel Access Road
31	Grid 656 at NW corner of Section 34, Township 31, Range 17, west of the 3rd Meridian	The intersection of the Plenty grid at the NW corner, Section 21, Township 32, Range 19, west of the 3rd Meridian
39 Bienfait Access	Jct Hwy 39	Jct Hwy 18 (In the Town of Bienfait)
40 David Laird Campsite Road	Jct No. Hwy 40	Jct Hwy No. 16
41 Alvena Access	Jct Hwy 41	2nd Avenue in Village of Alvena
42	Jct Hwy 42 - Keeler Service Road/Railway Ave. S.	Keeler Service Road/Railway Ave. to RM Road 643
42 (1)	Jct Hwy 373	Jct Hwy 45 in the Town of Lucky Lake

42	From its Jct with Hwy 44 (km 43.68)	its Jct with Hwy 15 (km 59.92), for a total of 16.2 km.
44(1)	<i>Jct Hwy 19</i>	<i>Junction with the Danielson Provincial Park Access located in the southeast of Section 32, Township 26, Range 6, West of the 3rd Meridian.</i>
44(1)	<i>Jct Hwy 21</i>	<i>Westerly to the Jct with the municipal road located in the NE 1/4 of Section 24, Township 26, Range 27, west of the 3rd Meridian</i>
44(1)	<i>Jct with the municipal road located at the SW 1/4 of Section 26, Township 26, Range 27, west of the 3rd Meridian</i>	<i>Jct with the municipal road located east of Section 31, Township 26, Range 27, west of the 3rd Meridian</i>
306	Riceton	Jct Hwy 6
308	Jct Hwy 8	Jct with Primary Grid 600
310	Jct of Grid 743	Jct of Hwy No. 16
312 Laird Access	Jct Hwy 312	The Village of Laird
332	7.1 km west of Jct Hwy 32	The Village of Hazlet except for that portion between the east and west Jct of Hwy 37
334	Jct Hwy 13	3.3 km south of Jct Hwy 339
339	Village of Avonlea	Jct. of Hwy 39 except for that portion from 11.4 km west of Avonlea to 21.2 km west of Avonlea
342	Jct Hwy 4	Jct of Primary Grid 647 north of Lacadena
371	Jct Hwy 21	Alberta Border

The following highways are restricted by Minister's ORDER to a maximum gross vehicle weight of 8 000 kilograms from March 1st to November 30th each year.

Hwy	From	To
302	Cecil Ferry Road at the SE corner of Section 22, Township 48, Range 24, west of the 2nd Meridian	Jct of the municipal road located at SE corner of Section 5, Township 49, Range 22, west of second Meridian (located by the Weldon Ferry)

The following access road is restricted by Minister's ORDER to a maximum gross vehicle weight of 8 000 kilograms from March 1st to November 30th each year.

Hwy	From	To
2 Paddockwood Access	Jct Hwy 2	Grid Road intersection NE Section 23, Township 52, Range 25, W2nd Meridian

The following highway is restricted by Minister's ORDER to a maximum gross vehicle weight of 8 000 kilograms from March 15th to November 15th each year and *when the ambient temperature is above -6°C*.

Hwy	From	To
8	0.5 km North of Junction Highway 49 at Norquay	The community of Swan Plain at the south boundary of SE 27-36-1-W2M

The following Access Road is restricted by Minister's ORDER to a maximum gross vehicle weight of 8 000 kilograms from February 24 to November 15th each year and *when the ambient temperature is above -6°C*.

Hwy	From	To
35 Aylsham Access	Hwy 35 (NW corner of section 32, township 48, range 14, west of second Meridian)	Aylsham (NE corner of section 34, township 48, range 13, west of second Meridian)

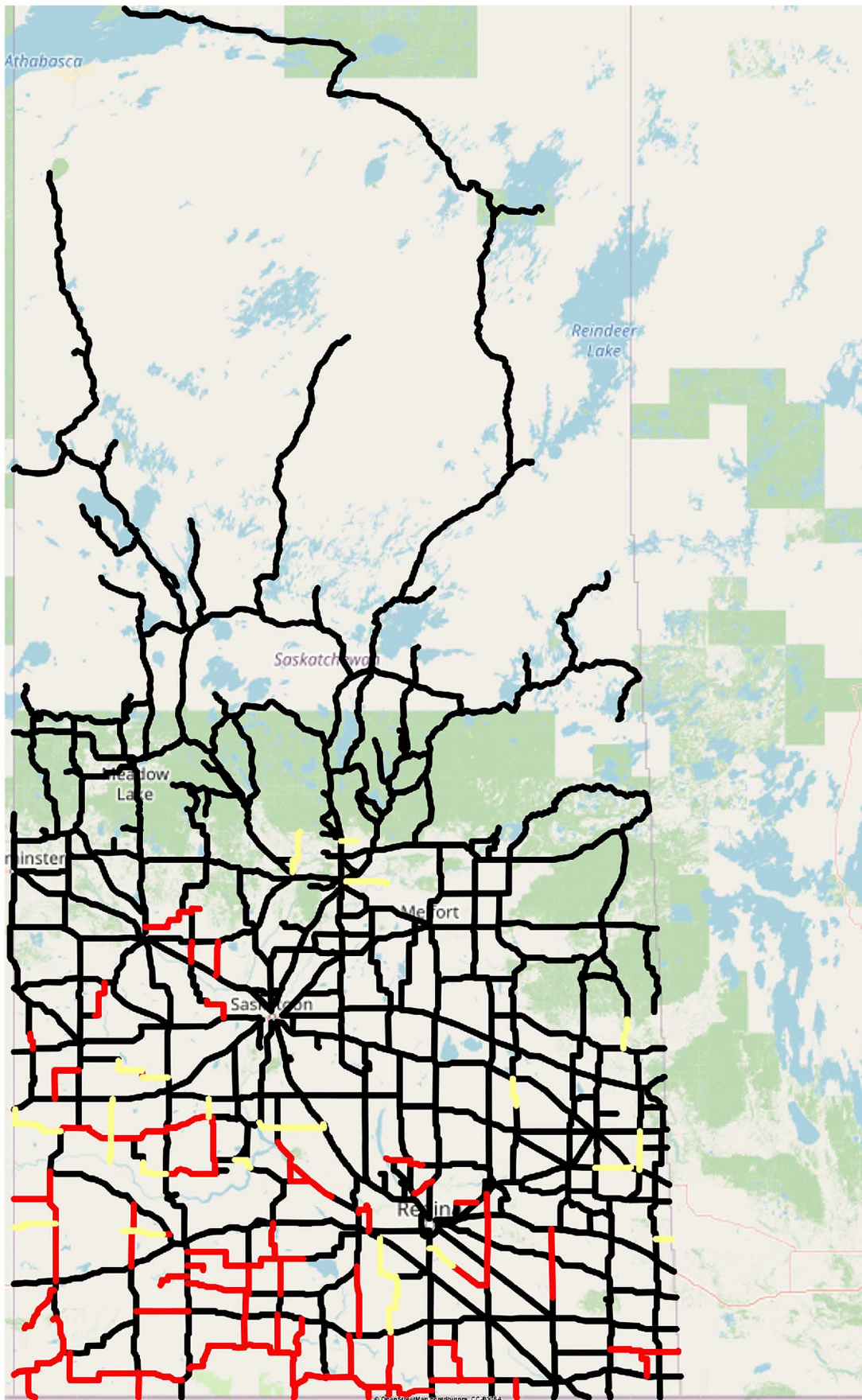
The following highway is restricted by Minister's ORDER to a maximum gross vehicle weight of 75% of primary highway weights, except during winter weight season, when winter secondary weights shall apply.

Hwy	From	To
240	Junction Highway 55	No. 240 - From Jct Hwy 55 to Prince Albert National Park SPECIAL RESTRICTIONS – 4.5 kg per mm (252 lbs/in) width of tire (manufacturer's stamped dimension) on any wheel to a maximum GVW of 22,686 kg (50,000 lbs), including the steering axle.

For detailed information on Rural Roads, call the local rural municipality or for Provincial Highway information email the Highway Hotline hotline@gov.sk.ca. The rural municipality administers and maintains the alternate haul routes. They are also responsible for issuing any overweight permits associated with the alternate haul routes.

Saskatchewan Ministry of Highways and Infrastructure provides seasonal highway restriction information on the Internet at: <http://www.saskatchewan.ca/truckingweights> under Special Weights.

Truckers can also contact the Saskatchewan Ministry of Highways, Trucking inquiry line at Toll free in Saskatchewan: 1-866-933-5290 Out of Saskatchewan: 306-933-5290 email: mhitrucking@gov.sk.ca



Winter Weight Season

- In Effect
- Not In Effect
- Future Restrictions

Spring Weight Season

- No Restrictions
- Restricted
- Future Restrictions

Special Weight Restrictions

- Special Weight Restrictions

Notes