

SPRING ROAD RESTRICTIONS

Thirteenth Order 2025

Minister's Order Pursuant to section 35(1) of "The Highways and Transportation Act, 1997"

Pursuant to section 35(1) of "*The Highways and Transportation Act, 1997*" it is hereby ordered that, effective as stated in this Order, **at 12:01 am, Monday May 5, 2025** until further notice, vehicles other than those exempted in Part II, section 3 (2) and 3 (5) of "*The Vehicle Weight and Dimensions Regulations, 2010*", shall be restricted as follows:

Steering Axle

- 10.0 kg per mm (560 pounds per inch) width of tire (manufacturer's stamped dimension) to a maximum of
- 5,500 kg on the steering axle for a truck or truck tractor equipped with a single steering axle.
- 11,000 kg on the steering axle group for a truck or truck tractor equipped with a tandem axle steering group.

Other Axles

- 6.25 kg per mm (350 pounds per inch) width of tire (manufacturer's stamped dimension) to a maximum of:
- 1,650 kg (3,638 pounds) per tire, or
- 2,630 kg per tire for axles equipped with single tires with a width of 445 mm or greater.

This order does not permit the weight on any axle, axle group or vehicle from exceeding the maximum weight prescribed in the "*The Vehicle Weight and Dimension Regulations, 2010*" for that axle, axle group or vehicle.

The restriction does not apply to:

- Emergency vehicles,
- Ministry of Highways vehicles and municipal maintenance equipment when conducting maintenance or accessing sites on or along the restricted highway,
- SaskPower, SaskEnergy and SaskTel vehicles when accessing sites along the restricted route,
- Recreational vehicles,
- Buses,
- Farm Equipment operated or towed,
- Vehicles directly crossing a Provincial Highway at an intersecting public highway or private road.

Please note that some provincial highways and bridges are subject to special reduced or restricted weights and some are for specific periods of the year, some for precise temperatures. A detailed description of these special restrictions is listed on the last four pages of this Order.

The following Rural Municipalities **will be removed** from Spring Road Restrictions **immediately upon posting this Order.**

RM No.

65	TECUMSEH	343	BLUCHER
127	FRANCIS	394	HUDSON BAY
151	ROCANVILLE	395	PORCUPINE
251	BIG ARM	402	FISH CREEK
310	USBORNE		

The following Provincial Highways **will be removed** from Spring Road Restrictions **at 12:01 am Monday May 5, 2025**

No. 18	From West Jct Hwy 36 to Rockglen	No. 220	From Jct Hwy 20 to Jct 322
No. 18	From Jct Hwy 35 to Jct Hwy 6	No. 301	From Jct Hwy 1 from 200 metres north of the bridge to Buffalo Pound Park
No. 18	From Jct Hwy 6 to East Jct Hwy 36	No. 306	From Jct Hwy 35 to Riceton
No. 19	From East Jct Hwy 42 to Elbow Access	No. 306	From Riceton to Jct Hwy 6 (<i>SPECIAL RESTRICTION – 8,000kgs</i>)
No. 22	From Earl Grey to Jct Hwy 20	No. 307	From Jct Hwy 7 to 13 km North of Jct Hwy 7
No. 30	From Eston Regional Park to Brock (<i>SPECIAL RESTRICTION – 8,000kgs</i>)	No. 308	From Jct Hwy 8 to Grid 600 (<i>SPECIAL RESTRICTION – 8,000kgs</i>)
No. 31	From Jct Hwy 4 to 23.1 km west (<i>SPECIAL RESTRICTION – 8,000kgs</i>)	No. 308	From Grid 600 to Manitoba Border
No. 31	From Herschel to grid 656	No. 317	From Jct 51 to 12 KM North
No. 31	From 29.6 km East of Plenty to Plenty (<i>SPECIAL RESTRICTION – 8,000kgs</i>)	No. 318	From 2 km N of Jct Hwy 18 to Jct Hwy 361
No. 34	From U.S. Border to Jct Hwy 13	No. 334	From Jct Hwy 13 to 3.3 km south of Jct Hwy 339 (<i>SEE SPECIAL RESTRICTION 8,000 Kgs</i>)
No. 35	From Jct Hwy 306 to Jct Hwy 33	No. 339	From Jct Hwy 334 to Jct Hwy 39 (<i>SEE SPECIAL RESTRICTION 8,000 Kgs</i>)
No. 35	From Jct Hwy 33 to Jct Hwy 48	No. 324	From Jct Hwy 378 to Mayfair
No. 35	From Jct Hwy 48 to Jct Hwy 1	No. 340	From Radisson to Hafford
No. 35	From 3.8 km North of Jct Hwy 1 to Jct Hwy 10	No. 342	From Jct Hwy 42 to Jct Hwy 4
No. 36	From U.S. Border to Jct Hwy 2	No. 342	From Jct Hwy 4 to Grid 647 (<i>north of Lacadena</i>) (<i>SPECIAL RESTRICTION – 8,000kgs</i>)
No. 42	from the Jct of 367 to the Jct North Jct of 19.	No. 350	From U.S. Border to Jct Hwy 18
No. 42	From Jct Hwy 342 to Dinsmore	No. 361	From Manitoba Border to Jct 9
No. 44	From 3 km south-west of Davidson (Meridian Road) to Jct. Hwy 19 (<i>SPECIAL RESTRICTION – 8,000kgs</i>)	No. 364	From Km 19.08 to Km 36.45
No. 44	From Dinsmore to Jct Hwy 4	No. 367	From Jct Hwy 42 to Jct Hwy 19
No. 44	From 3.2 Km's West of Eston to N. Jct. of 21	No. 374	From Jct Hwy 14 to Tramping Lake
No. 44	From 400 Meters West of the North Jct Hwy 21 to the South Jct Hwy 21	No. 376	From Asquith to Jct Hwy 40
No. 99	From Craven to Jct Hwy 6	No. 378	From Jct Hwy 4 to Jct Hwy 324
No. 202	Jct Hwy 2 to Buffalo Pound Park	No. 377	From Jct Hwy 28 to Jct Hwy 6

The following Access Roads will be removed from Spring Road Restrictions at 12:01 am Monday May 5,2025

No. 1	Sintaluta Access	No. 15	Milden Access
No. 1	McLean Park Access	No. 15	Sovereign Access
No. 1	Grand Coulee Access (<i>SPECIAL RESTRICTION – 8,000kgs</i>)	No. 18	Beaubier
No. 1	North urban limits of Pense	No. 18	Gladmar Access
No. 2	Sun Valley Beach Access	No. 18	Big Beaver Access
No. 2	Holdfast Access	No. 20	Duval Access
No. 2	Penzance Access	No. 20	Bulyea Access
No. 2	Liberty Access	No. 22	Dysart Access
No. 4	Cando Access	No. 22	Earl Grey Service Road
No. 4	Metinota Access	No. 31	Herschel Access
No. 4	Aquadeo Access	No. 33	Osage Access Road
No. 8	Tantallon Access (<i>SPECIAL RESTRICTION – 8,000kgs</i>)	No. 39	Mc Taggart Service Road
No. 11	Bethune Access	No. 39	Wilcox Service Road
No. 11	Findlater Access	No. 39	Roche Percee Access
No. 11	Findlater Service Road	No. 40	Speers Access
No. 11	Aylesbury Access	No. 40	David Laird Campground Access (<i>YEAR ROUND RESTRICTION – 8,000kgs</i>)
No. 11	Craik Access	No. 44	Plato Access
No. 11	Girvin Access	No. 44	Glidden Access
No. 11	Davidson South	No. 48	Fairlight Access
No. 13	Pangman Access	No. 48	Kendal Service Road
No. 13	Khedive Access	No. 48	Odessa Service Road
No. 13	Trossachs Access	No. 48	Vibank Service Road
No. 13	Bellegarde Access (<i>SPECIAL RESTRICTION – 8,000kgs</i>)	No. 51	Handel Access
No. 13	Arcola Access	No. 51	Ruthilda Access
No. 13	Forget Access (<i>SPECIAL RESTRICTION – 8,000kgs</i>)	No. 51	Major Access
No. 14	Senlac Access	No. 322	Kanata Valley Access
		No. 322	Saskatchewan Beach Access
		No. 364	Edenwold Access

The following Rural Municipalities will be removed from Spring Road Restrictions at 12:01 am Monday May 5,2025

6	CAMBRIA	69	NORTON	126	MONTMARTRE
7	SOURIS VALLEY	71	EXCEL	132	HILLSBOROUGH
8	LAKE ALMA	72	LAKE OF THE RIVERS	153	WILLOWDALE
10	HAPPY VALLEY	73	STONEHENGE	154	ELCAPO
11	HART BUTTE	94	HAZELWOOD	155	WOLSELEY
38	LAURIER	95	GOLDEN WEST	156	INDIAN HEAD
40	BENGOUGH	96	FILLMORE	157	SOUTH QU'APPELLE
42	WILLOW BUNCH	97	WELLINGTON	159	SHERWOOD
67	WEYBURN	124	KINGSLEY	187	NORTH QU'APPELLE
68	BROKENSHELL	125	CHESTER	189	LUMSDEN

191	MARQUIS	256	KING GEORGE	377	GLENSIDE
193	EYEBROW	260	NEWCOMBE	378	ROSEMOUNT
194	ENFIELD	271	COTE	381	GRASS LAKE
216	TULLYMET	279	MOUNT HOPE	382	EYE HILL
218	CUPAR	316	HARRIS	406	MAYFIELD
219	LONGLAKETON	346	PERDUE	409	BUFFALO
220	MCKILLOP	347	BIGGAR	410	ROUND VALLEY
223	HURON	349	GRANDVIEW	437	NORTH BATTLEFORD
224	MAPLE BUSH	350	MARIPOSA	438	BATTLE RIVER
225	CANAAN	351	PROGRESS	440	HILLSDALE
226	VICTORY	352	HEART'S HILL	468	MEOTA
228	LACADENA	373	ABERDEEN	470	PAYNTON
250	LAST MOUNTAIN VALLEY	376	EAGLE CREEK	494	CANWOOD

Signed on behalf of the Minister on this 2nd day of May 2025.



Lana Eering
Government of Saskatchewan
Ministry of Highways
Manager, Highway Hotline/Emergency Planning Officer

The following Provincial Highways are subject to SPECIAL Spring Road Restrictions.

Highway No. 55 - (old Hwy 55) From Jct Hwy 240 to 3 km West (Marchant Grove) **SPECIAL RESTRICTIONS** – 4.5 kg per mm (252 lbs/in) width of tire (manufacturer’s stamped dimension) on any wheel to a maximum GVW of 22,686 kg (50,000 lbs), including the steering axle.

Highway No. 240 - From Jct Hwy 55 to Prince Albert National Park **SPECIAL RESTRICTIONS** – 4.5 kg per mm (252 lbs/in) width of tire (manufacturer’s stamped dimension) on any wheel to a maximum GVW of 22,686 kg (50,000 lbs), including the steering axle.

The following Provincial Highways are subject to Spring Road Restrictions.

No. 3	From Manitoba Border to Hudson Bay	No. 44	From Dinsmore east to Macrorie
No. 4	From Jct Hwy 55 to Jct Hwy 224	No. 45	From Birsay to Jct Hwy 15
No. 5	From Manitoba Border to Jct Hwy 57	No. 45	From 8 kms South of Swanson to Delisle
No. 8	From Norquay to 14.6 km. South of Forest Boundary (SPECIAL RESTRICTIONS -8,000kgs from Midnight Mar. 14 to Midnight Nov. 15)	No. 47	From Handsworth Road to Jct Hwy 1
No. 9	From Hudson Bay to Ruby Lake Access	No. 47	From Willowbrook to Buchanan
No. 15	From Jct Hwy 16 to Jct Hwy 9 (SPECIAL RESTRICTION – 8,000kgs)	No. 47	From 1 km North of Buchanan to Preeceville
No. 15	From Jct Hwy 2 to 27.8 km West	No. 52	From Willowbrook to Homefield
No. 15	From Farrerdale to Jct Hwy 11	No. 52	From Homefield to Jct Hwy 15
No. 20	From Middle Lake to Jct Hwy 320	No. 55	(old Hwy 55) From Jct Hwy 55 to 3 km West (Marchant Grove)
No. 20	From 1.6 km North of Pilger to Middle Lake	No. 80	From K-1 Mine Access to Churchbridge
No. 20	From Jct Hwy 320 to Jct Hwy 3	No. 80	From North town limits of Churchbridge to Jct Hwy 10 (SPECIAL RESTRICTION – 8,000kgs)
No. 22	From Manitoba Border to South Jct Hwy 8	No. 102	From La Ronge Airport Access to 1.5 km N. of Nemeiben River Bridge
No. 22	From Jct Hwy 9 to Jct Hwy 47	No. 106	From Jct Hwy 928 to Creighton
No. 22	From Jct Hwy 47 to East Jct grid 617	No. 123	From Jct Hwy 55 to E.B. Campbell Dam
No. 24	From 11 km North of Spiritwood to Leoville	No. 155	From 7.0 km North of Jct Hwy 165 to La Loche
No. 24	From Leoville to Chitek Lake	No. 167	From Sturgeon Weir River to Creighton
No. 25	From Jct Hwy 3 to Jct Hwy 2	No. 167	From Denare Beach to Creighton
No. 26	From 14 km North of Jct Hwy 304 to South Jct of 55 and 26 south of Peerless	No. 201	From 500m north of Jct Hwy 1 to Hwy 247
No. 28	From Jct Hwy 18 to Jct Hwy 377	No. 211	From Jct Hwy 11 to Blackstrap
No. 35	From Jct Hwy 48 to Jct Hwy 1	No. 211	From Jct Hwy 11 to Blackstrap
No. 35	From 3.8 km North of Jct Hwy 1 to Jct Hwy 10	No. 212	From Jct Hwy 11 to Fort Carlton Park
No. 35	From 3.8 km North of Jct Hwy 1 to Jct Hwy 10	No. 225	Hwy 225 from jct. of hwy 2 from Grid Road is spring road bans and from Grid to hwy 312.
No. 35	From White Fox to Roads End	No. 225	Hwy 225 from it’s junction rural municipal road at the E of the NE7-44-27-W2 (east of St. Isidore-de-Bellevue) to the Jct with the rural municipal road at the E. of the NE11-27-28-W2. (MO/3-969-2021-WI1) to 9-month primary.
No. 42	From Riverhurst Ferry to Jct Hwy 373	No. 229	From Jct Hwy 9 to Jct Hwy 47
No. 42	From Jct Hwy 373 to Lucky Lake (SPECIAL RESTRICTION – 8,000kgs)	No. 247	From Jct Hwy 9 to Jct Hwy 47
No. 42	From Lucky Lake to Jct Hwy 342	No. 255	From Jct Hwy 55 to Tobin Lake
No. 42	From its Jct with Hwy 44 (km 43.68) to its Jct with Hwy 15 (km 59.92), for a total of 16.2 km. (SPECIAL RESTRICTION – 8,000kgs)	No. 302	From Weldon Ferry to 21 km East of Prince Albert (SPECIALRESTRICTION – 8,000kgs)
No. 44	From Jct Hwy 19 to Danielson Provincial Park Access (SPECIAL RESTRICTION – 8,000kgs)	No. 310	From Jct Hwy 52 to Grid 743
No. 44	From Hwy 44 from 1.12km west of the junction of Hwy 219 to Hwy 45		

No. 310	From Jct Grid 743 to Jct Hwy 16 (SPECIAL RESTRICTION – 8,000kgs)	No. 349	From Jct Hwy 35 to 15 km East of Naicam
No. 310	From Jct Hwy 16 to Jct Hwy 5	No. 355	From Meath Park to Sturgeon Lake Reserve
No. 312	From Wakaw to Rosthern	No. 357	From Togo to Jct Hwy 8
No. 320	From Jct Hwy 20 to Domremy	No. 365	From Manitou Beach to Plunkett
No. 324	From Jct Hwy 378 to Mayfair	No. 373	From Jct Hwy 42 to Birsay
No. 340	From Radisson to Hafford	No. 378	From Jct Hwy 324 to Spiritwood
No. 342	From Jct Hwy 42 to Jct Hwy 4	No. 908	From Jct Hwy 155 to Ile-a-la-Crosse
No. 342	From Jct Hwy 4 to Grid 647 (north of Lacadena) (SPECIAL RESTRICTION – 8,000kgs)	No. 953	From Jct Hwy 2 to Jct Hwy 263

The following Access Roads are subject to Spring Road Restrictions.

No. 2	Imperial Access	No. 6	Fairy Glen Access
No. 2	Simpson Access	No. 8	Wroxton Access
No. 2	Meacham Access	No. 9	Dubuc Access
No. 2	Dana Access	No. 9	Crystal Lake Access
No. 2	Wakaw Lake Park Access	No. 9	Ebenezer Access
No. 2	Cudworth Access	No. 9	Endeavour Access
No. 2	Weyakwin Access	No. 9	Gorlitz Access
No. 2	Ramsey Bay Access	No. 9	Tadmire Access
No. 2	Paddockwood Access (SPECIAL RESTRICTION – 8,000kgs)	No. 11	Kenaston bypass/alternate
No. 3	Prairie River Access	No. 11	Hanley Access
No. 3	Crooked River Access	No. 11	Dundurn Access
No. 3	Eldersley Access	No. 11	Gruenthal Access
No. 3	Valparaiso Access	No. 11	Blumenthal Access
No. 3	Weldon Access	No. 11	Neunlage Access
No. 3	Brancepeth Access	No. 11	Macdowell Access
No. 3	30 Metres N of the railway crossing at Birch Hills	No. 12	Gruenfeldt Access
No. 3	Shell Lake Access	No. 12	Waldheim Access (SPECIAL RESTRICTION – 8,000kgs)
No. 3	Medstead Access	No. 15	Service Road – All thin membrane surfaced roads from Fenwood to Leross
No. 3	Monte Nebo Access	No. 15	Punnichy Access
No. 3	Turtle Lake South Bay Access	No. 15	Conquest Access
No. 4	Meadow Lake Airport – 220 meters West of Jct Hwy 4(Meadow Lake Urban Limits) to Meadow Lake Airport	No. 16	Jansen Access
No. 5	Veregin Access	No. 16	Guernsey Access
No. 5	Mikado Access	No. 16	Plunkett Access
No. 5	Kuroki Access	No. 16	Viscount Access
No. 5	From Leroy to 6.45 kms West	No. 16	Bradwell Access (SPECIAL RESTRICTION – 8,000kgs)
No. 5	St. Gregor Access	No. 16	Dalmeny Access from Jct 16 to Jct 305
No. 5	Peterson Access	No. 19	Strongfield Access
No. 5	St. Denis Access	No. 19	Hawarden Access
No. 6	Lac Vert Access	No. 20	Middle Lake Access
No. 6	Pleasantdale Access	No. 20	St. Benedict Access
		No. 20	Tway Access

No. 22	Atwater Access	No. 45	Coteau Beach Access
No. 22	Grayson Access	No. 49	Hazel Dell Access
No. 22	Gerald Access	No. 49	Hyas Access
No. 23	Caragana Access	No. 49	Stenen Access
No. 23	Zenon Park Access	No. 55	Love Access
No. 23	Weekes Access	No. 55	Garrick Access
No. 25	Birch Hills Access	No. 55	Choiceland Access
No. 25	Hagen Access	No. 55	Snowden Access
No. 27	Aberdeen Access	No. 80	Yarbo Access
No. 35	Wishart Access	No. 123	Cumberland House Bridge to the Cumberland House Airport
No. 35	Sylvania Access	No. 155	Buffalo Narrows Airport
No. 35	Ridgedale Access	No. 219	Glenside Access
No. 35	Aylsham Access (<i>SPECIAL RESTRICTION – 8,000kgs</i>)	No. 219	Riverside Estate Access
No. 40	Leask Access	No. 219	Furdales Access
No. 40	Marcelin Access	No. 312	Laird Access (<i>SPECIAL RESTRICTION – 8,000kgs</i>)
No. 41	Hwy 41 North to Aberdeen	No. 349	Saint-Front Access
No. 43	Palmer Access		

The following Rural Municipalities are subject to Spring Road Restrictions

181	LANGENBURG	303	KEYS	403	ROSTHERN
184	GRAYSON	304	BUCHANAN	431	ST. LOUIS
214	CANA	307	ELFROS	461	PRINCE ALBERT
215	STANLEY	312	MORRIS	463	DUCK LAKE
217	LIPTON	313	LOST RIVER	464	LEASK
241	CALDER	314	DUNDURN	466	MEETING LAKE
243	WALLACE	315	MONTROSE	467	ROUND HILL
244	ORKNEY	331	LIVINGSTON	486	MOOSE RANGE
245	GARRY	333	CLAYTON	487	NIPAWIN
246	ITUNA BON ACCORD	334	PREECEVILLE	488	TORCH RIVER
248	TOUCHWOOD	335	HAZEL DELL	490	GARDEN RIVER
255	COTEAU	336	SASMAN	491	BUCKLAND
273	SLIDING HILLS	338	LAKESIDE	493	SHELLBROOK
274	GOOD LAKE	340	WOLVERINE	496	SPIRITWOOD
275	INSINGER	341	VISCOUNT	497	MEDSTEAD
276	FOAM LAKE	344	CORMAN PARK	498	PARKDALE
277	EMERALD	366	KELVINGTON	499	MERVIN
280	WREFORD	368	SPALDING	501	FRENCHMAN BUTTE
281	WOOD CREEK	369	ST. PETER	520	PADDOCKWOOD
282	MCCRANEY	370	HUMBOLDT	521	DISTRICT OF LAKELAND
283	ROSEDALE	371	BAYNE	555	BIG RIVER
284	RUDY	372	GRANT	561	LOON LAKE
285	FERTILE VALLEY	399	LAKE LENORE	588	MEADOW LAKE
301	ST. PHILIPS	400	THREE LAKES	622	BEAVER RIVER

**The following section is not part of the Order but is appended as INFORMATION:
Special Weight Restrictions on Selected Provincial Highways.**

The following highways are subject to reduced weights, year round, by regulation in accordance with the *Vehicle Weight and Dimension Regulations, 2010*

Hwy	From	To	Description
955	South abutment of the Douglas River Bridge	Northern most limit of Highway 955	Maximum GVW 41 500 kg

The following BRIDGES are restricted by Minister's ORDER to a maximum gross vehicle weight of Secondary Weights year-round. Winter Weights are not allowed.

Hwy	Bridge Location Description
2	Bridge over Little Red River from Southern Bridge Abutment to Northern Bridge Abutment. Bridge is located approximately 4.4 km south of Jct. with Hwy 355 and Hwy 2 near Spruce Home. Bridge is located on East Frontage Road.
3	Bridge over Red Deer River from Eastern Bridge Abutment to Western Bridge Abutment located approximately .5km west of Erwood, Sk.
4 Metinota Access	Bridge over Jackfish Narrows from Eastern Bridge Abutment to Western Bridge Abutment. Bridge is located in access road approximately 3.1km west of the Jct. with Hwy 4. Bridge is located on access road.
312 Gabriel Dumont Bridge	Truss Bridge over South Saskatchewan River from Eastern Bridge Abutment to Western Bridge Abutment.
334	Bridge over Willow Creek from Eastern Bridge Abutment to Western Bridge Abutment. Bridge is located approximately 18.6 km east of Avonlea, sk. and the Jct. with Hwy 339 and Hwy 334.
919	Bridge over Martineau River from Southern Bridge Abutment to Northern Bridge Abutment. Bridge is located approximately 39.5km northwest of the Jct. with Hwy 21 and Hwy 950
935	Bridge over Morin River from the Southern Bridge Abutment to the Northern Bridge Abutment. Bridge is located approximately 7km north of the Jct. with Hwy 165 and Hwy 935.
955 Clearwater Truss Bridge	Truss Bridge over Clearwater River from Southern Bridge Abutment to Northern Bridge Abutment. Bridge is located approximately - 62 km north of Jct 155 and 955 to the Clearwater Bridge.
980 Elbow Lake Access	Bridge over Midnight Creek from Eastern Bridge Abutment to Western Bridge Abutment. Bridge is located approximately .3 km west of Elbow Lake, Sk.. The bridge is located on Spirit Lake/Elbow Lake access road.

The following BRIDGES are restricted by Minister's ORDER to a maximum gross vehicle weight of Primary Weights year-round. Winter Weights are not allowed.

Hwy	Bridge Location Description
2	Northbound Bridge over Hwy 1 from Southern Bridge Abutment to Northern Bridge Abutment. Bridge is located North of Moose Jaw at Jtc. with Hwy 1 and Hwy 2
2	Southbound Bridge over Hwy 1 from Southern Bridge Abutment to Northern Bridge Abutment. Bridge is located north of Moose Jaw Sk. at Jtc. with Hwy 1 and Hwy 2
6	Bridge over Barrier River Overflow from Southern Bridge Abutment to Northern Bridge Abutment. Bridge is located approximately 25.7 km south of Melfort, Sk.

The following highways are restricted by Minister's ORDER to a maximum gross vehicle weight of 8 000 kilograms year round.

Highway	From	To
1 Caron Access	Jct Hwy 1	Hamlet of Caron
1 Grand Coulee Access	Jct Hwy 1	Village of Grand Coulee
2 Eastside Service Road near Prince Albert	Jct Boundary Street East Service Rd north	Jct Township Road (approx. 2.4 kms)
4 Blumenhof Access	Jct Hwy 4 east	Blumenhof
6 Leroy Access	Jct Hwy 6	Town of Leroy
8 Tantallon Access	Jct. Hwy 8	Village of Tantallon
12 Hepburn Access	Jct. Hwy 12	Village of Hepburn
12 Waldheim Access	Jct. Hwy 12	100 meters west of the west boundary of NW 15-42-5 W3M in the town of Waldheim.
13 Bellegarde Access	Jct. Hwy 13	Bellegarde
13 Forget Access	Jct. Hwy 13	The Village of Forget
15	Jct. Hwy 16	Jct. Hwy 9
16 Bradwell Access	Jct. Hwy 16	Village of Bradwell
21 Mendham Access	Jct Hwy 21 Mendham Access	Intersection with the North-South portion of the Municipal Alternate Truck Route
30	Eston Regional Park located at the southwest corner of Section 20, Township 23, Range 20, West 3rd Meridian	The jct. of municipal Hwy located at the north-east corner of Section 34, Township 28, Range 20, West 3rd Meridian
31	Jct. Hwy 4	Herschel Access Road
31	Grid 656 at NW corner of Section 34, Township 31, Range 17, west of the 3rd Meridian	The intersection of the Plenty grid at the NW corner, Section 21, Township 32, Range 19, west of the 3rd Meridian
39 Bienfait Access	Jct Hwy 39	Jct Hwy 18 (In the Town of Bienfait)
40 David Laird Campsite Road	Jct No. Hwy 40	Jct Hwy No. 16
41 Alvena Access	Jct Hwy 41	2nd Avenue in Village of Alvena
42	Jct Hwy 42 - Keeler Service Road/Railway Ave. S.	Keeler Service Road/Railway Ave. to RM Road 643
42 (1)	Jct Hwy 373	Jct Hwy 45 in the Town of Lucky Lake

42	From its Jct with Hwy 44 (km 43.68)	its Jct with Hwy 15 (km 59.92), for a total of 16.2 km.
44(1)	<i>Jct Hwy 19</i>	<i>Junction with the Danielson Provincial Park Access located in the southeast of Section 32, Township 26, Range 6, West of the 3rd Meridian.</i>
44(1)	<i>Jct Hwy 21</i>	<i>Westerly to the Jct with the municipal road located in the NE 1/4 of Section 24, Township 26, Range 27, west of the 3rd Meridian</i>
44(1)	<i>Jct with the municipal road located at the SW 1/4 of Section 26, Township 26, Range 27, west of the 3rd Meridian</i>	<i>Jct with the municipal road located east of Section 31, Township 26, Range 27, west of the 3rd Meridian</i>
306	Riceton	Jct Hwy 6
308	Jct Hwy 8	Jct with Primary Grid 600
310	Jct of Grid 743	Jct of Hwy No. 16
312 Laird Access	Jct Hwy 312	The Village of Laird
332	7.1 km west of Jct Hwy 32	The Village of Hazlet except for that portion between the east and west Jct of Hwy 37
334	Jct Hwy 13	3.3 km south of Jct Hwy 339
339	Village of Avonlea	Jct. of Hwy 39 except for that portion from 11.4 km west of Avonlea to 21.2 km west of Avonlea
342	Jct Hwy 4	Jct of Primary Grid 647 north of Lacadena
371	Jct Hwy 21	Alberta Border

The following highways are restricted by Minister's ORDER to a maximum gross vehicle weight of 8 000 kilograms from March 1st to November 30th each year.

Hwy	From	To
302	Cecil Ferry Road at the SE corner of Section 22, Township 48, Range 24, west of the 2nd Meridian	Jct of the municipal road located at SE corner of Section 5, Township 49, Range 22, west of Second Meridian (located by the Weldon Ferry)

The following access road is restricted by Minister's ORDER to a maximum gross vehicle weight of 8 000 kilograms from March 1st to November 30th each year.

Hwy	From	To
2 Paddockwood Access	Jct Hwy 2	Grid Road intersection NE Section 23, Township 52, Range 25, W2nd Meridian

The following highway is restricted by Minister's ORDER to a maximum gross vehicle weight of 8 000 kilograms from March 15th to November 15th each year and *when the ambient temperature is above -6°C*.

Hwy	From	To
8	0.5 km North of Junction Highway 49 at Norquay	The community of Swan Plain at the south boundary of SE 27-36-1-W2M

The following Access Road is restricted by Minister's ORDER to a maximum gross vehicle weight of 8 000 kilograms from February 24 to November 15th each year and *when the ambient temperature is above -6°C*.

Hwy	From	To
35 Aylsham Access	Hwy 35 (NW corner of section 32, township 48, range 14, west of second Meridian)	Aylsham (NE corner of section 34, township 48, range 13, west of second Meridian)

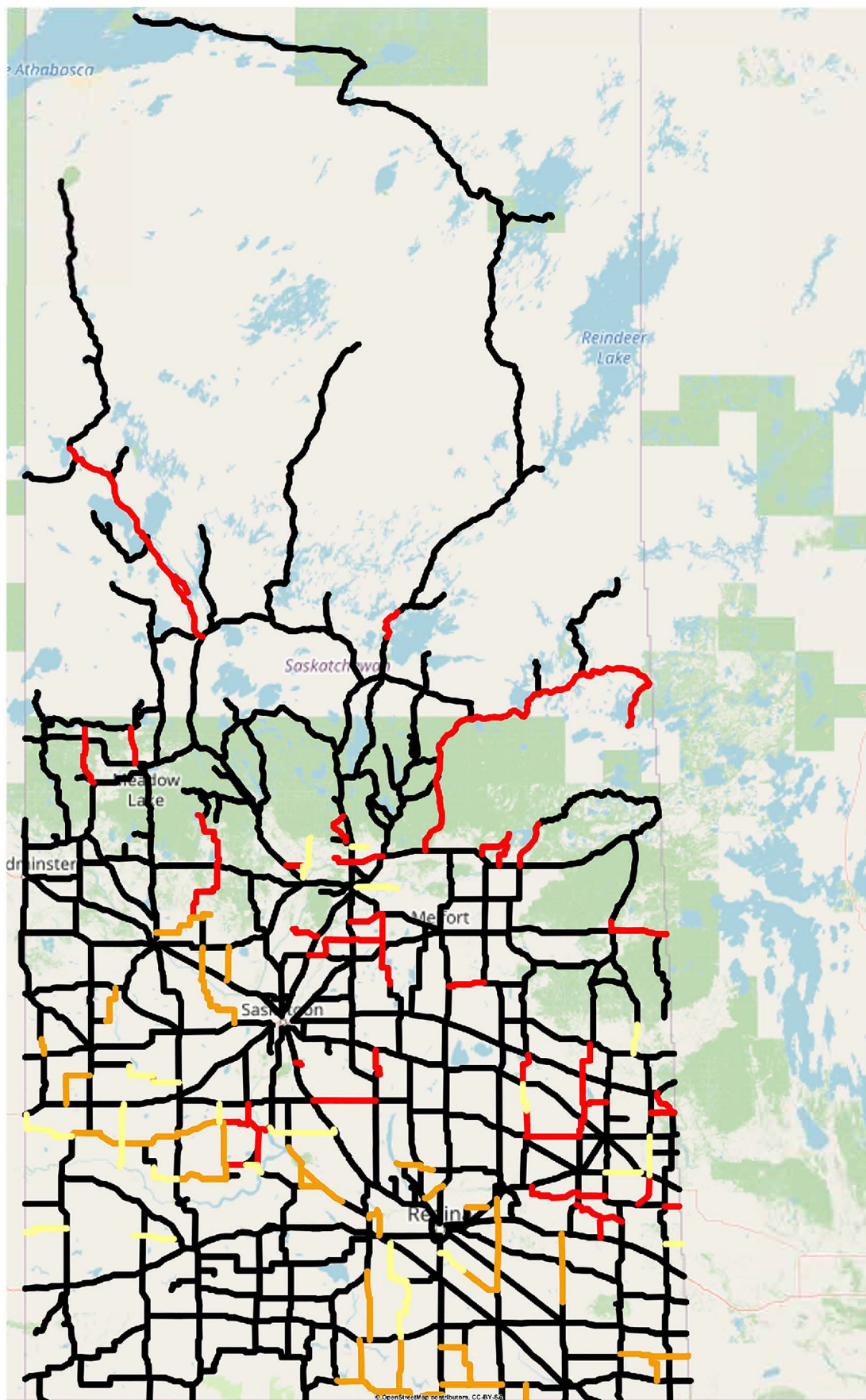
The following highway is restricted by Minister's ORDER to a maximum gross vehicle weight of 75% of primary highway weights, except during winter weight season, when winter secondary weights shall apply.

Hwy	From	To
240	Junction Highway 55	No. 240 - From Jct Hwy 55 to Prince Albert National Park SPECIAL RESTRICTIONS – 4.5 kg per mm (252 lbs/in) width of tire (manufacturer's stamped dimension) on any wheel to a maximum GVW of 22,686 kg (50,000 lbs), including the steering axle.

For detailed information on Rural Roads, call the local rural municipality or for Provincial Highway information email the Highway Hotline hotline@gov.sk.ca. The rural municipality administers and maintains the alternate haul routes. They are also responsible for issuing any overweight permits associated with the alternate haul routes.

Saskatchewan Ministry of Highways and Infrastructure provides seasonal highway restriction information on the Internet at: <http://www.saskatchewan.ca/truckingweights> under Special Weights.

Truckers can also contact the Saskatchewan Ministry of Highways, Trucking inquiry line at Toll free in Saskatchewan: 1-866-933-5290 Out of Saskatchewan: 306-933-5290 email: mhitrucking@gov.sk.ca



Winter Weight Season

In Effect

Not In Effect

Future Restrictions

Spring Weight Season

No Restrictions

Restricted

Future Changes & Restrictions

Special Weight Restrictions

Special Weight Restrictions

Notes

Removal of Spring Restrictions for Moose Jaw, Weyburn & North Battleford District - for May 5, 2025