

## SPRING ROAD RESTRICTIONS

Twelfth Order 2025

### Minister's Order Pursuant to section 35(1) of "The Highways and Transportation Act, 1997"

Pursuant to section 35(1) of "*The Highways and Transportation Act, 1997*" it is hereby ordered that, effective as stated in this Order, **at 12:01 am, Friday May 2, 2025** until further notice, vehicles other than those exempted in Part II, section 3 (2) and 3 (5) of "*The Vehicle Weight and Dimensions Regulations, 2010*", shall be restricted as follows:

#### Steering Axle

- 10.0 kg per mm (560 pounds per inch) width of tire (manufacturer's stamped dimension) to a maximum of
- 5,500 kg on the steering axle for a truck or truck tractor equipped with a single steering axle.
- 11,000 kg on the steering axle group for a truck or truck tractor equipped with a tandem axle steering group.

#### Other Axles

- 6.25 kg per mm (350 pounds per inch) width of tire (manufacturer's stamped dimension) to a maximum of:
- 1,650 kg (3,638 pounds) per tire, or
- 2,630 kg per tire for axles equipped with single tires with a width of 445 mm or greater.

This order does not permit the weight on any axle, axle group or vehicle from exceeding the maximum weight prescribed in the "*The Vehicle Weight and Dimension Regulations, 2010*" for that axle, axle group or vehicle.

The restriction does not apply to:

- Emergency vehicles,
- Ministry of Highways vehicles and municipal maintenance equipment when conducting maintenance or accessing sites on or along the restricted highway,
- SaskPower, SaskEnergy and SaskTel vehicles when accessing sites along the restricted route,
- Recreational vehicles,
- Buses,
- Farm Equipment operated or towed,
- Vehicles directly crossing a Provincial Highway at an intersecting public highway or private road.

Please note that some provincial highways and bridges are subject to special reduced or restricted weights and some are for specific periods of the year, some for precise temperatures. A detailed description of these special restrictions is listed on the last four pages of this Order.

The following Rural Municipalities **will be removed** from Spring Road Restrictions **immediately upon posting this Order.**

**RM No.**

122 MARTIN  
190 DUFFERIN  
339 LEROY  
345 VANSKOY  
401 HOODOO  
428 STAR CITY

The following Provincial Highways **will be removed** from Spring Road Restrictions **at 12:01 am Friday May 2,2025**

No. 2	From U.S. Border to St. Victor Access	No. 58	From Jct Hwy 18 to Jct Hwy 13
No. 13	Cadillac to Junction 37	No. 58	From N limits of Gravelbourg to Jct Hwy 1
No. 13	North Jct Hwy 21 to Alberta Border	No. 221	Jct Hwy 21 to Cypress Hills Park Gate
No. 18	From Ponteix Grid to Jct. 13 at Robsart	No. 271	Maple Creek (Jct Hwy 21) to Fort Walsh
No. 18	From Jct Hwy 2 to Ponteix Grid	No. 321	Liebenthal (Jct Hwy 21) to 7 km East of the Alberta Border
No. 19	From Jct Hwy 18 to North Jct Hwy 363	No. 332	Jct Hwy 32 to 7.1 km West of Jct Hwy 32
No. 21	U.S. Border to West Jct Hwy 13	No. 332	<b>7.1 km West of Jct Hwy 32 to Hazlet (SPECIAL RESTRICTION – 8,000kgs)</b>
No. 21	East Jct Hwy 13 to Cypress Park Entrance	No. 343	Jct Hwy 4 to Simmie
No. 21	Jct Hwy 1 to 12 km South of Leader	No. 358	From Wood Mountain to Limerick
No. 37	U.S. Border to Climax	No. 363	From 43 km West of Moose Jaw to Neidpath
No. 37	2.35 km North of Gull Lake to Cabri	No. 363	Neidpath to Jct Hwy 4
No. 43	From Jct Hwy 4 to Jct Hwy 19	No. 371	<b>Jct Hwy 21 to Alberta Border (SPECIAL RESTRICTION – 8,000kgs)</b>
No. 44	<b>South Jct Hwy 21 to 3.33 km West of Mantario (SPECIAL RESTRICTION – 8,000kgs)</b>	No. 379	McMahon to 14.66 km East of Junction No. 4
No. 44	3.33 kms West of Mantario to Alsask		

The following Access Roads **will be removed** from Spring Road Restrictions **at 12:01 am Friday May 2,2025**

No. 1	Rush Lake Access	No. 18	McCord Access
No. 1	Waldeck Access	No. 19	Kincaid Access
No. 1	Webb Access from Km 0 to 1.87 Km	No. 21	Golden Praire
No. 1	Tompkins Access	No. 21	Medham Access (Jct 21 to 8.1 KM west) Special restriction 8,000kgs_
No. 1	Piapot Access	No. 363	Coderre Access
No. 4	Blumehof Access <b>(SPECIAL RESTRICTION – 8,000kgs)</b>	No. 363	Shamrock Access
No. 4	Rhineland Access		

The following Rural Municipalities **will be removed** from Spring Road Restrictions **at 12:01 am Friday May 2,2025**

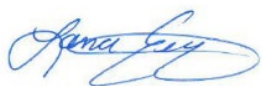
12	POPLAR VALLEY	45	MANKOTA	51	RENO
43	OLD POST	49	WHITE VALLEY	103	SUTTON

104 GRAVELBOURG  
110 PIAPOT  
123 SILVERWOOD  
128 LAJORD  
133 RODGERS

134 SHAMROCK  
135 LAWTONIA  
142 ENTERPRISE  
164 CHAPLIN  
166 EXCELSIOR

229 MIRY CREEK  
230 CLINTWORTH  
309 PRAIRIE ROSE

Signed on behalf of the Minister on this 29<sup>th</sup> day of April 2025.



Lana Eering  
Government of Saskatchewan  
Ministry of Highways  
Manager, Highway Hotline/Emergency Planning Officer

The following Provincial Highways **are** subject to SPECIAL Spring Road Restrictions.

**Highway No. 55** - (old Hwy 55) From Jct Hwy 240 to 3 km West (Marchant Grove) **SPECIAL RESTRICTIONS** – 4.5 kg per mm (252 lbs/in) width of tire (manufacturer’s stamped dimension) on any wheel to a maximum GVW of 22,686 kg (50,000 lbs), including the steering axle.

**Highway No. 240** - From Jct Hwy 55 to Prince Albert National Park **SPECIAL RESTRICTIONS** – 4.5 kg per mm (252 lbs/in) width of tire (manufacturer’s stamped dimension) on any wheel to a maximum GVW of 22,686 kg (50,000 lbs), including the steering axle.

The following Provincial Highways **are** subject to Spring Road Restrictions.

No. 3	From Manitoba Border to Hudson Bay	No. 34	From U.S. Border to Jct Hwy 13
No. 4	From Jct Hwy 55 to Jct Hwy 224	No. 35	From Jct Hwy 48 to Jct Hwy 1
No. 5	From Manitoba Border to Jct Hwy 57	No. 35	From 3.8 km North of Jct Hwy 1 to Jct Hwy 10
No. 8	From Norquay to 14.6 km. South of Forest Boundary ( <b>SPECIAL RESTRICTIONS -8,000kgs from Midnight Mar. 14 to Midnight Nov. 15</b> )	No. 35	From Jct Hwy 306 to Jct Hwy 33
No. 9	From Hudson Bay to Ruby Lake Access	No. 35	From Jct Hwy 33 to Jct Hwy 48
No. 15	From Jct Hwy 16 to Jct Hwy 9 ( <b>SPECIAL RESTRICTION – 8,000kgs</b> )	No. 35	From 3.8 km North of Jct Hwy 1 to Jct Hwy 10
No. 15	From Jct Hwy 2 to 27.8 km West	No. 35	From White Fox to Roads End
No. 15	From Farrerdale to Jct Hwy 11	No. 36	From U.S. Border to Jct Hwy 2
No. 18	From West Jct Hwy 36 to Rockglen	No. 42	From Riverhurst Ferry to Jct Hwy 373
No. 18	From Jct Hwy 6 to East Jct Hwy 36	No. 42	From Jct Hwy 373 to Lucky Lake ( <b>SPECIAL RESTRICTION – 8,000kgs</b> )
No. 18	From Jct Hwy 35 to Jct Hwy 6	No. 42	From Lucky Lake to Jct Hwy 342
No. 19	From East Jct Hwy 42 to Elbow Access	No. 42	From its Jct with Hwy 44 (km 43.68) to its Jct with Hwy 15 (km 59.92), for a total of 16.2 km. ( <b>SPECIAL RESTRICTION – 8,000kgs</b> )
No. 20	From Middle Lake to Jct Hwy 320	No. 42	from the Jct of 367 to the Jct North Jct of 19.
No. 20	From 1.6 km North of Pilger to Middle Lake	No. 42	From Jct Hwy 342 to Dinsmore
No. 20	From Jct Hwy 320 to Jct Hwy 3	No. 44	From Jct Hwy 19 to Danielson Provincial Park Access ( <b>SPECIAL RESTRICTION – 8,000kgs</b> )
No. 22	From Manitoba Border to South Jct Hwy 8	No. 44	From Hwy 44 from 1.12km west of the junction of Hwy 219 to Hwy 45
No. 22	From Jct Hwy 9 to Jct Hwy 47	No. 44	From Dinsmore east to Macrorie
No. 22	From Jct Hwy 47 to East Jct grid 617	No. 44	From 3 km south-west of Davidson (Meridian Road) to Jct. Hwy 19 ( <b>SPECIALRESTRICTION – 8,000kgs</b> )
No. 22	From Earl Grey to Jct Hwy 20	No. 44	From Dinsmore to Jct Hwy 4
No. 24	From 11 km North of Spiritwood to Leoville	No. 44	From 3.2 Km’s West of Eston to N. Jct. of 21
No. 24	From Leoville to Chitek Lake	No. 44	From 400 Meters West of the North Jct Hwy 21 to the South Jct Hwy 21
No. 25	From Jct Hwy 3 to Jct Hwy 2	No. 45	From Birsay to Jct Hwy 15
No. 26	From 14 km North of Jct Hwy 304 to South Jct of 55 and 26 south of Peerless	No. 45	From 8 kms South of Swanson to Delisle
No. 28	From Jct Hwy 18 to Jct Hwy 377	No. 47	From Handsworth Road to Jct Hwy 1
No. 30	From Eston Regional Park to Brock ( <b>SPECIAL RESTRICTION – 8,000kgs</b> )	No. 47	From Willowbrook to Buchanan
No. 31	From Jct Hwy 4 to 23.1 km west ( <b>SPECIAL RESTRICTION – 8,000kgs</b> )	No. 47	From 1 km North of Buchanan to Preeceville
No. 31	From Herschel to grid 656	No. 52	From Willowbrook to Homefield
No. 31	From 29.6 km East of Plenty to Plenty ( <b>SPECIAL RESTRICTION – 8,000kgs</b> )		

No. 52	From Homefield to Jct Hwy 15	No. 308	From Jct Hwy 8 to Grid 600 ( <b>SPECIAL RESTRICTION – 8,000kgs</b> )
No. 55	(old Hwy 55) From Jct Hwy 55 to 3 km West (Marchant Grove)	No. 308	From Grid 600 to Manitoba Border
No. 80	From K-1 Mine Access to Churchbridge	No. 310	From Jct Hwy 52 to Grid 743
No. 80	<b>From North town limits of Churchbridge to Jct Hwy 10 (SPECIAL RESTRICTION – 8,000kgs)</b>	No. 310	From Jct Grid 743 to Jct Hwy 16 (SPECIAL RESTRICTION – 8,000kgs)
No. 99	From Craven to Jct Hwy 6	No. 310	From Jct Hwy 16 to Jct Hwy 5
No. 102	From La Ronge Airport Access to 1.5 km N. of Nemeiben River Bridge	No. 312	From Wakaw to Rosthern
No. 106	From Jct Hwy 928 to Creighton	No. 317	From Jct 51 to 12 KM North
No. 123	From Jct Hwy 55 to E.B. Campbell Dam	No. 318	From 2 km N of Jct Hwy 18 to Jct Hwy 361
No. 155	From 7.0 km North of Jct Hwy 165 to La Loche	No. 320	From Jct Hwy 20 to Domremy
No. 167	From Sturgeon Weir River to Creighton	No. 324	From Jct Hwy 378 to Mayfair
No. 167	From Denare Beach to Creighton	No. 334	From Jct Hwy 13 to 3.3 km south of Jct Hwy 339 ( <b>SEE SPECIAL RESTRICTION 8,000 Kgs</b> )
No. 201	From 500m north of Jct Hwy 1 to Hwy 247	No. 339	From Jct Hwy 334 to Jct Hwy 39 ( <b>SEE SPECIAL RESTRICTION 8,000 Kgs</b> )
No. 202	Jct Hwy 2 to Buffalo Pound Park	No. 340	From Radisson to Hafford
No. 211	From Jct Hwy 11 to Blackstrap	No. 342	From Jct Hwy 42 to Jct Hwy 4
No. 211	From Jct Hwy 11 to Blackstrap	No. 342	From Jct Hwy 4 to Grid 647 ( <b>north of Lacadena (SPECIAL RESTRICTION – 8,000kgs)</b> )
No. 212	From Jct Hwy 11 to Fort Carlton Park	No. 349	From Jct Hwy 35 to 15 km East of Naicam
No. 220	From Jct Hwy 20 to Jct 322	No. 350	From U.S. Border to Jct Hwy 18
No. 225	Hwy 225 from jct. of hwy 2 from Grid Road is spring road bans and from Grid to hwy 312.	No. 355	From Meath Park to Sturgeon Lake Reserve
No. 225	Hwy 225 from it's junction rural municipal road at the E of the NE7-44-27-W2 (east of St. Isidore-de-Bellevue) to the Jct with the rural municipal road at the E. of the NE11-27-28-W2. (MO/3-969-2021-WI1) to 9-month primary.	No. 357	From Togo to Jct Hwy 8
No. 229	From Jct Hwy 9 to Jct Hwy 47	No. 361	From Manitoba Border to Jct 9
No. 247	From Jct Hwy 9 to Jct Hwy 47	No. 364	From Km 19.08 to Km 36.45
No. 255	From Jct Hwy 55 to Tobin Lake	No. 365	From Manitou Beach to Plunkett
No. 301	From Jct Hwy 1 from 200 metres north of the bridge to Buffalo Pound Park	No. 367	From Jct Hwy 42 to Jct Hwy 19
No. 302	From Weldon Ferry to 21 km East of Prince Albert (SPECIALRESTRICTION – 8,000kgs)	No. 373	From Jct Hwy 42 to Birsay
No. 306	From Jct Hwy 35 to Riceton	No. 374	From Jct Hwy 14 to Tramping Lake
No. 306	<b>From Riceton to Jct Hwy 6 (SPECIAL RESTRICTION – 8,000kgs)</b>	No. 376	From Asquith to Jct Hwy 40
No. 307	From Jct Hwy 7 to 13 km North of Jct Hwy 7	No. 377	From Jct Hwy 28 to Jct Hwy 6
		No. 378	From Jct Hwy 4 to Jct Hwy 324
		No. 378	From Jct Hwy 324 to Spiritwood
		No. 908	From Jct Hwy 155 to Ile-a-la-Crosse
		No. 953	From Jct Hwy 2 to Jct Hwy 263

**The following Access Roads are subject to Spring Road Restrictions.**

No. 1	Sintaluta Access	No. 2	Meacham Access
No. 1	McLean Park Access	No. 2	Dana Access
No. 1	Grand Coulee Access ( <b>SPECIAL RESTRICTION – 8,000kgs</b> )	No. 2	Wakaw Lake Park Access
No. 1	North urban limits of Pense	No. 2	Cudworth Access
No. 2	Imperial Access	No. 2	Sun Valley Beach Access
No. 2	Simpson Access	No. 2	Holdfast Access
		No. 2	Penzance Access

No. 2	Liberty Access	No. 11	Blumenthal Access
No. 2	Weyakwin Access	No. 11	Neunlage Access
No. 2	Ramsey Bay Access	No. 11	Bethune Access
No. 2	Paddockwood Access ( <i>SPECIAL RESTRICTION – 8,000kgs</i> )	No. 11	Findlater Access
No. 3	Prairie River Access	No. 11	Findlater Service Road
No. 3	Crooked River Access	No. 11	Aylesbury Access
No. 3	Eldersley Access	No. 11	Craik Access
No. 3	Valparaiso Access	No. 11	Girvin Access
No. 3	Weldon Access	No. 11	Davidson South
No. 3	Brancepeth Access	No. 11	Macdowell Access
No. 3	30 Metres N of the railway crossing at Birch Hills	No. 12	Gruenfeldt Access
No. 3	Shell Lake Access	No. 12	Waldheim Access ( <i>SPECIAL RESTRICTION – 8,000kgs</i> )
No. 3	Medstead Access	No. 13	Pangman Access
No. 3	Monte Nebo Access	No. 13	Khediye Access
No. 3	Turtle Lake South Bay Access	No. 13	Trossachs Access
No. 4	Cando Access	No. 13	Bellegarde Access ( <i>SPECIAL RESTRICTION – 8,000kgs</i> )
No. 4	Metinota Access	No. 13	Arcola Access
No. 4	Aquadeo Access	No. 13	Forget Access ( <i>SPECIAL RESTRICTION – 8,000kgs</i> )
No. 4	Meadow Lake Airport – 220 meters West of Jct Hwy 4(Meadow Lake Urban Limits) to Meadow Lake Airport	No. 14	Senlac Access
No. 5	Veregin Access	No. 15	Service Road – All thin membrane surfaced roads from Fenwood to Leross
No. 5	Mikado Access	No. 15	Punnichy Access
No. 5	Kuroki Access	No. 15	Conquest Access
No. 5	From Leroy to 6.45 kms West	No. 15	Milden Access
No. 5	St. Gregor Access	No. 15	Sovereign Access
No. 5	Peterson Access	No. 15	Semans Access
No. 5	St. Denis Access	No. 16	Jansen Access
No. 6	Lac Vert Accessc	No. 16	Guernsey Access
No. 6	Pleasantdale Access	No. 16	Plunkett Access
No. 6	Fairy Glen Access	No. 16	Viscount Access
No. 8	Wroxton Access	No. 16	Bradwell Access ( <i>SPECIAL RESTRICTION – 8,000kgs</i> )
No. 8	Tantallon Access ( <i>SPECIAL RESTRICTION – 8,000kgs</i> )	No. 16	Dalmeny Access from Jct 16 to Jct 305
No. 9	Dubuc Access	No. 18	Beaubier
No. 9	Crystal Lake Access	No. 18	Gladmar Access
No. 9	Ebenezer Access	No. 18	Big Beaver Access
No. 9	Endeavour Access	No. 19	Strongfield Access
No. 9	Gorlitz Access	No. 19	Hawarden Access
No. 9	Tadmore Access	No. 20	Middle Lake Access
No. 11	Kenaston bypass/alternate	No. 20	St. Benedict Access
No. 11	Hanley Access	No. 20	Tway Access
No. 11	Dundurn Access	No. 20	Duval Access
No. 11	Gruenthal Access	No. 20	Bulyea Access

No. 22	Atwater Access	No. 44	Glidden Access
No. 22	Grayson Access	No. 45	Coteau Beach Access
No. 22	Gerald Access	No. 48	Fairlight Access
No. 22	Dysart Access	No. 48	Kendal Service Road
No. 22	Earl Grey Service Road	No. 48	Odessa Service Road
No. 23	Caragana Access	No. 48	Vibank Service Road
No. 23	Zenon Park Access	No. 49	Hazel Dell Access
No. 23	Weekes Access	No. 49	Hyas Access
No. 25	Birch Hills Access	No. 49	Stenen Access
No. 25	Hagen Access	No. 51	Handel Access
No. 27	Aberdeen Access	No. 51	Ruthilda Access
No. 31	Herschel Access	No. 51	Major Access
No. 33	Osage Access Road	No. 55	Love Access
No. 35	Wishart Access	No. 55	Garrick Access
No. 35	Sylvania Access	No. 55	Choiceland Access
No. 35	Ridgedale Access	No. 55	Snowden Access
No. 35	Aylsham Access ( <i>SPECIAL RESTRICTION – 8,000kgs</i> )	No. 80	Yarbo Access
No. 39	Mc Taggart Service Road	No. 123	Cumberland House Bridge to the Cumberland House Airport
No. 39	Wilcox Service Road	No. 155	Buffalo Narrows Airport
No. 39	Roche Percee Access	No. 219	Glenside Access
No. 40	Speers Access	No. 219	Riverside Estate Access
No. 40	David Laird Campground Access ( <i>YEAR ROUND RESTRICTION – 8,000kgs</i> )	No. 219	Furdale Access
No. 40	Leask Access	No. 312	Laird Access ( <i>SPECIAL RESTRICTION – 8,000kgs</i> )
No. 40	Marcelin Access	No. 322	Kanata Valley Access
No. 41	Hwy 41 North to Aberdeen	No. 322	Saskatchewan Beach Access
No. 43	Palmer Access	No. 349	Saint-Front Access
No. 44	Plato Access	No. 364	Edenwold Access

**The following Rural Municipalities are subject to Spring Road Restrictions**

6	CAMBRIA	73	STONEHENGE	156	INDIAN HEAD
7	SOURIS VALLEY	94	HAZELWOOD	157	SOUTH QU'APPELLE
8	LAKE ALMA	95	GOLDEN WEST	159	SHERWOOD
10	HAPPY VALLEY	96	FILLMORE	181	LANGENBURG
11	HART BUTTE	97	WELLINGTON	184	GRAYSON
38	LAURIER	124	KINGSLEY	187	NORTH QU'APPELLE
40	BENGOUGH	125	CHESTER	189	LUMSDEN
42	WILLOW BUNCH	126	MONTMARTRE	191	MARQUIS
65	TECUMSEH	127	FRANCIS	193	EYEBROW
67	WEYBURN	132	HILLSBOROUGH	194	ENFIELD
68	BROKENSHELL	151	ROCANVILLE	214	CANA
69	NORTON	153	WILLOWDALE	215	STANLEY
71	EXCEL	154	ELCAPO	216	TULLYMET
72	LAKE OF THE RIVERS	155	WOLSELEY	217	LIPTON



218	CUPAR	310	USBORNE	399	LAKE LENORE
219	LONGLAKETON	312	MORRIS	400	THREE LAKES
220	MCKILLOP	313	LOST RIVER	402	FISH CREEK
223	HURON	314	DUNDURN	403	ROSTHERN
224	MAPLE BUSH	315	MONTROSE	406	MAYFIELD
225	CANAAN	316	HARRIS	409	BUFFALO
226	VICTORY	331	LIVINGSTON	410	ROUND VALLEY
228	LACADENA	333	CLAYTON	431	ST. LOUIS
241	CALDER	334	PREECEVILLE	437	NORTH BATTLEFORD
243	WALLACE	335	HAZEL DELL	438	BATTLE RIVER
244	ORKNEY	336	SASMAN	440	HILLSDALE
245	GARRY	338	LAKESIDE	461	PRINCE ALBERT
246	ITUNA BON ACCORD	340	WOLVERINE	463	DUCK LAKE
248	TOUCHWOOD	341	VISCOUNT	464	LEASK
250	LAST MOUNTAIN VALLEY	343	BLUCHER	466	MEETING LAKE
251	BIG ARM	344	CORMAN PARK	467	ROUND HILL
255	COTEAU	346	PERDUE	468	MEOTA
256	KING GEORGE	347	BIGGAR	470	PAYNTON
260	NEWCOMBE	349	GRANDVIEW	486	MOOSE RANGE
271	COTE	350	MARIPOSA	487	NIPAWIN
273	SLIDING HILLS	351	PROGRESS	488	TORCH RIVER
274	GOOD LAKE	352	HEART'S HILL	490	GARDEN RIVER
275	INSINGER	366	KELVINGTON	491	BUCKLAND
276	FOAM LAKE	368	SPALDING	493	SHELLBROOK
277	EMERALD	369	ST. PETER	494	CANWOOD
279	MOUNT HOPE	370	HUMBOLDT	496	SPIRITWOOD
280	WREFORD	371	BAYNE	497	MEDSTEAD
281	WOOD CREEK	372	GRANT	498	PARKDALE
282	MCCRANEY	373	ABERDEEN	499	MERVIN
283	ROSEDALE	376	EAGLE CREEK	501	FRENCHMAN BUTTE
284	RUDY	377	GLENSIDE	520	PADDOCKWOOD
285	FERTILE VALLEY	378	ROSEMOUNT	521	DISTRICT OF LAKELAND
301	ST. PHILIPS	381	GRASS LAKE	555	BIG RIVER
303	KEYS	382	EYE HILL	561	LOON LAKE
304	BUCHANAN	394	HUDSON BAY	588	MEADOW LAKE
307	ELFROS	395	PORCUPINE	622	BEAVER RIVER



**The following section is not part of the Order but is appended as INFORMATION:  
Special Weight Restrictions on Selected Provincial Highways.**

**The following highways are subject to reduced weights, year round, by regulation in accordance with the *Vehicle Weight and Dimension Regulations, 2010***

Hwy	From	To	Description
955	South abutment of the Douglas River Bridge	Northern most limit of Highway 955	Maximum GVW 41 500 kg

**The following BRIDGES are restricted by Minister's ORDER to a maximum gross vehicle weight of Secondary Weights year-round. Winter Weights are not allowed.**

Hwy	Bridge Location Description
2	Bridge over Little Red River from Southern Bridge Abutment to Northern Bridge Abutment. Bridge is located approximately 4.4 km south of Jct. with Hwy 355 and Hwy 2 near Spruce Home. <b>Bridge is located on East Frontage Road.</b>
3	Bridge over Red Deer River from Eastern Bridge Abutment to Western Bridge Abutment located approximately .5km west of Erwood, Sk.
4 Metinota Access	Bridge over Jackfish Narrows from Eastern Bridge Abutment to Western Bridge Abutment. Bridge is located in access road approximately 3.1km west of the Jct. with Hwy 4. <b>Bridge is located on access road.</b>
312 Gabriel Dumont Bridge	Truss Bridge over South Saskatchewan River from Eastern Bridge Abutment to Western Bridge Abutment.
334	Bridge over Willow Creek from Eastern Bridge Abutment to Western Bridge Abutment. Bridge is located approximately 18.6 km east of Avonlea, sk. and the Jct. with Hwy 339 and Hwy 334.
919	Bridge over Martineau River from Southern Bridge Abutment to Northern Bridge Abutment. Bridge is located approximately 39.5km northwest of the Jct. with Hwy 21 and Hwy 950
935	Bridge over Morin River from the Southern Bridge Abutment to the Northern Bridge Abutment. Bridge is located approximately 7km north of the Jct. with Hwy 165 and Hwy 935.
955 Clearwater Truss Bridge	Truss Bridge over Clearwater River from Southern Bridge Abutment to Northern Bridge Abutment. Bridge is located approximately - 62 km north of Jct 155 and 955 to the Clearwater Bridge.
980 Elbow Lake Access	Bridge over Midnight Creek from Eastern Bridge Abutment to Western Bridge Abutment. Bridge is located approximately .3 km west of Elbow Lake, Sk.. <b>The bridge is located on Spirit Lake/Elbow Lake access road.</b>

**The following BRIDGES are restricted by Minister's ORDER to a maximum gross vehicle weight of Primary Weights year-round. Winter Weights are not allowed.**

Hwy	Bridge Location Description
2	Northbound Bridge over Hwy 1 from Southern Bridge Abutment to Northern Bridge Abutment. Bridge is located North of Moose Jaw at Jtc. with Hwy 1 and Hwy 2
2	Southbound Bridge over Hwy 1 from Southern Bridge Abutment to Northern Bridge Abutment. Bridge is located north of Moose Jaw Sk. at Jtc. with Hwy 1 and Hwy 2
6	Bridge over Barrier River Overflow from Southern Bridge Abutment to Northern Bridge Abutment. Bridge is located approximately 25.7 km south of Melfort, Sk.

The following highways are restricted by Minister's ORDER to a maximum gross vehicle weight of 8 000 kilograms year round.

Highway	From	To
1 Caron Access	Jct Hwy 1	Hamlet of Caron
1 Grand Coulee Access	Jct Hwy 1	Village of Grand Coulee
2 Eastside Service Road near Prince Albert	Jct Boundary Street East Service Rd north	Jct Township Road (approx. 2.4 kms)
4 Blumenhof Access	Jct Hwy 4 east	Blumenhof
6 Leroy Access	Jct Hwy 6	Town of Leroy
8 Tantallon Access	Jct. Hwy 8	Village of Tantallon
12 Hepburn Access	Jct. Hwy 12	Village of Hepburn
12 Waldheim Access	Jct. Hwy 12	100 meters west of the west boundary of NW 15-42-5 W3M in the town of Waldheim.
13 Bellegarde Access	Jct. Hwy 13	Bellegarde
13 Forget Access	Jct. Hwy 13	The Village of Forget
15	Jct. Hwy 16	Jct. Hwy 9
16 Bradwell Access	Jct. Hwy 16	Village of Bradwell
21 Mendham Access	Jct Hwy 21 Mendham Access	Intersection with the North-South portion of the Municipal Alternate Truck Route
30	Eston Regional Park located at the southwest corner of Section 20, Township 23, Range 20, West 3rd Meridian	The jct. of municipal Hwy located at the north-east corner of Section 34, Township 28, Range 20, West 3rd Meridian
31	Jct. Hwy 4	Herschel Access Road
31	Grid 656 at NW corner of Section 34, Township 31, Range 17, west of the 3rd Meridian	The intersection of the Plenty grid at the NW corner, Section 21, Township 32, Range 19, west of the 3rd Meridian
39 Bienfait Access	Jct Hwy 39	Jct Hwy 18 (In the Town of Bienfait)
40 David Laird Campsite Road	Jct No. Hwy 40	Jct Hwy No. 16
41 Alvena Access	Jct Hwy 41	2nd Avenue in Village of Alvena
42	Jct Hwy 42 - Keeler Service Road/Railway Ave. S.	Keeler Service Road/Railway Ave. to RM Road 643
42 (1)	Jct Hwy 373	Jct Hwy 45 in the Town of Lucky Lake

42	From its Jct with Hwy 44 (km 43.68)	its Jct with Hwy 15 (km 59.92), for a total of 16.2 km.
44(1)	<i>Jct Hwy 19</i>	<i>Junction with the Danielson Provincial Park Access located in the southeast of Section 32, Township 26, Range 6, West of the 3rd Meridian.</i>
44(1)	<i>Jct Hwy 21</i>	<i>Westerly to the Jct with the municipal road located in the NE 1/4 of Section 24, Township 26, Range 27, west of the 3rd Meridian</i>
44(1)	<i>Jct with the municipal road located at the SW 1/4 of Section 26, Township 26, Range 27, west of the 3rd Meridian</i>	<i>Jct with the municipal road located east of Section 31, Township 26, Range 27, west of the 3rd Meridian</i>
306	Riceton	Jct Hwy 6
308	Jct Hwy 8	Jct with Primary Grid 600
310	Jct of Grid 743	Jct of Hwy No. 16
312 Laird Access	Jct Hwy 312	The Village of Laird
332	7.1 km west of Jct Hwy 32	The Village of Hazlet except for that portion between the east and west Jct of Hwy 37
334	Jct Hwy 13	3.3 km south of Jct Hwy 339
339	Village of Avonlea	Jct. of Hwy 39 except for that portion from 11.4 km west of Avonlea to 21.2 km west of Avonlea
342	Jct Hwy 4	Jct of Primary Grid 647 north of Lacadena
371	Jct Hwy 21	Alberta Border

**The following highways are restricted by Minister's ORDER to a maximum gross vehicle weight of 8 000 kilograms from March 1<sup>st</sup> to November 30<sup>th</sup> each year.**

<b>Hwy</b>	<b>From</b>	<b>To</b>
302	Cecil Ferry Road at the SE corner of Section 22, Township 48, Range 24, west of the 2nd Meridian	Jct of the municipal road located at SE corner of Section 5, Township 49, Range 22, west of Second Meridian (located by the Weldon Ferry)

**The following access road is restricted by Minister's ORDER to a maximum gross vehicle weight of 8 000 kilograms from March 1<sup>st</sup> to November 30<sup>th</sup> each year.**

<b>Hwy</b>	<b>From</b>	<b>To</b>
2 Paddockwood Access	Jct Hwy 2	Grid Road intersection NE Section 23, Township 52, Range 25, W2nd Meridian

The following highway is restricted by Minister's ORDER to a maximum gross vehicle weight of 8 000 kilograms from March 15<sup>th</sup> to November 15<sup>th</sup> each year and *when the ambient temperature is above -6°C*.

Hwy	From	To
8	0.5 km North of Junction Highway 49 at Norquay	The community of Swan Plain at the south boundary of SE 27-36-1-W2M

The following Access Road is restricted by Minister's ORDER to a maximum gross vehicle weight of 8 000 kilograms from February 24 to November 15<sup>th</sup> each year and *when the ambient temperature is above -6°C*.

Hwy	From	To
35 Aylsham Access	Hwy 35 (NW corner of section 32, township 48, range 14, west of second Meridian)	Aylsham (NE corner of section 34, township 48, range 13, west of second Meridian)

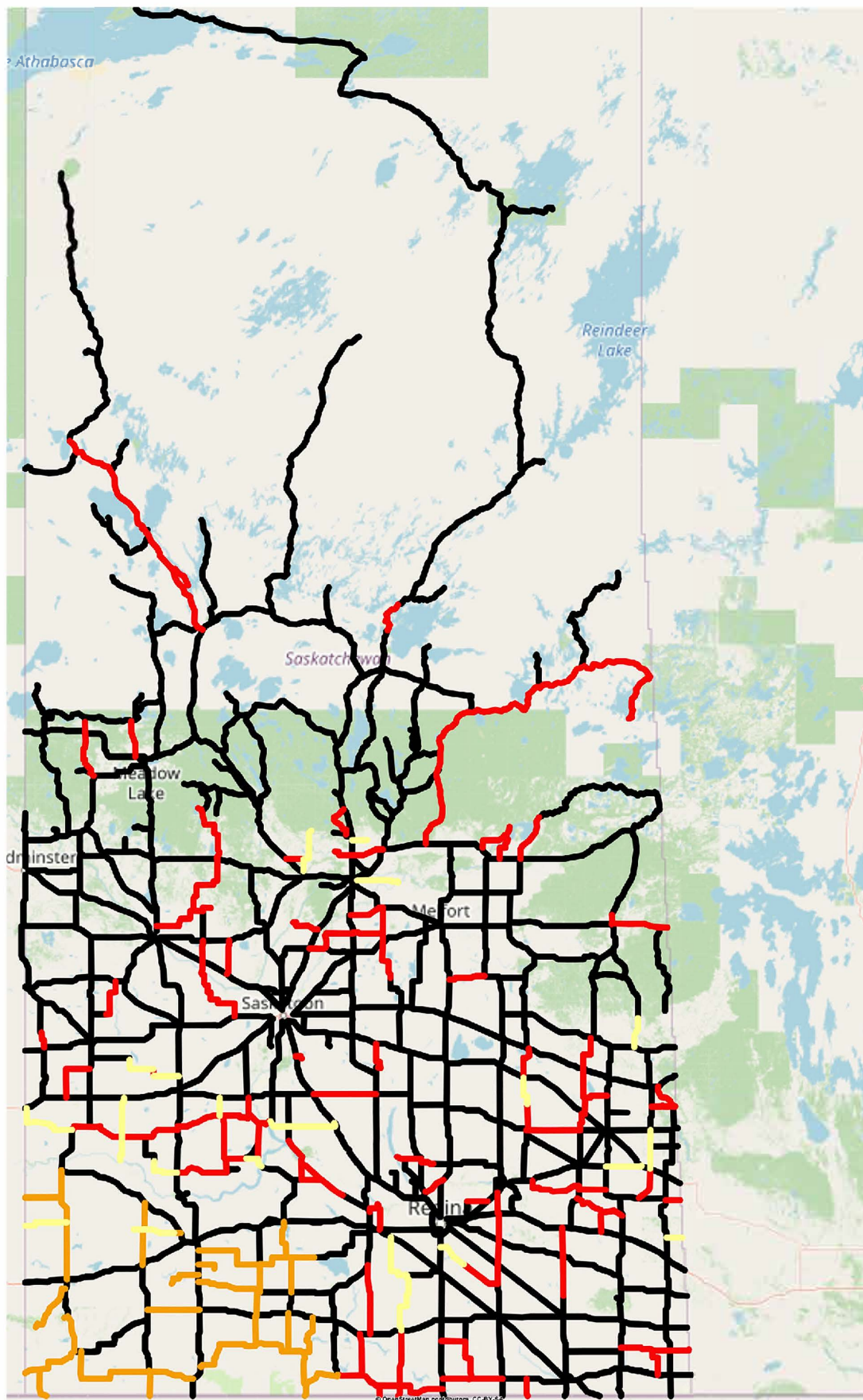
The following highway is restricted by Minister's ORDER to a maximum gross vehicle weight of 75% of primary highway weights, except during winter weight season, when winter secondary weights shall apply.

Hwy	From	To
240	Junction Highway 55	No. 240 - From Jct Hwy 55 to Prince Albert National Park SPECIAL RESTRICTIONS – 4.5 kg per mm (252 lbs/in) width of tire (manufacturer's stamped dimension) on any wheel to a maximum GVW of 22,686 kg (50,000 lbs), including the steering axle.

For detailed information on Rural Roads, call the local rural municipality or for Provincial Highway information email the Highway Hotline [hotline@gov.sk.ca](mailto:hotline@gov.sk.ca). The rural municipality administers and maintains the alternate haul routes. They are also responsible for issuing any overweight permits associated with the alternate haul routes.

Saskatchewan Ministry of Highways and Infrastructure provides seasonal highway restriction information on the Internet at: <http://www.saskatchewan.ca/truckingweights> under Special Weights.

Truckers can also contact the Saskatchewan Ministry of Highways, Trucking inquiry line at Toll free in Saskatchewan: 1-866-933-5290 Out of Saskatchewan: 306-933-5290 email: [mhitrucking@gov.sk.ca](mailto:mhitrucking@gov.sk.ca)



**Winter Weight Season**

- In Effect
- Not In Effect
- Future Restrictions

**Spring Weight Season**

- No Restrictions
- Restricted
- Future Restrictions

**Special Weight Restrictions**

- Special Weight Restrictions

Notes  
SW Corner Spring Restriction  
removal May, 2, 2025