

## SPRING ROAD RESTRICTIONS

**Eleventh Order 2025**

### **Minister's Order Pursuant to section 35(1) of "The Highways and Transportation Act, 1997"**

Pursuant to section 35(1) of "*The Highways and Transportation Act, 1997*" it is hereby ordered that, effective as stated in this Order, **at 12:01 am, Monday April 28, 2025** until further notice, vehicles other than those exempted in Part II, section 3 (2) and 3 (5) of "*The Vehicle Weight and Dimensions Regulations, 2010*", shall be restricted as follows:

#### **Steering Axle**

- 10.0 kg per mm (560 pounds per inch) width of tire (manufacturer's stamped dimension) to a maximum of
- 5,500 kg on the steering axle for a truck or truck tractor equipped with a single steering axle.
- 11,000 kg on the steering axle group for a truck or truck tractor equipped with a tandem axle steering group.

#### **Other Axles**

- 6.25 kg per mm (350 pounds per inch) width of tire (manufacturer's stamped dimension) to a maximum of:
- 1,650 kg (3,638 pounds) per tire, or
- 2,630 kg per tire for axles equipped with single tires with a width of 445 mm or greater.

This order does not permit the weight on any axle, axle group or vehicle from exceeding the maximum weight prescribed in the "*The Vehicle Weight and Dimension Regulations, 2010*" for that axle, axle group or vehicle.

The restriction does not apply to:

- Emergency vehicles,
- Ministry of Highways vehicles and municipal maintenance equipment when conducting maintenance or accessing sites on or along the restricted highway,
- SaskPower, SaskEnergy and SaskTel vehicles when accessing sites along the restricted route,
- Recreational vehicles,
- Buses,
- Farm Equipment operated or towed,
- Vehicles directly crossing a Provincial Highway at an intersecting public highway or private road.


Please note that some provincial highways and bridges are subject to special reduced or restricted weights and some are for specific periods of the year, some for precise temperatures. A detailed description of these special restrictions is listed on the last four pages of this Order.

The following Rural Municipalities will be removed from Spring Road Restrictions **immediately upon posting this Order.**

**RM No.**

101 TERRELL  
379 REFORD  
398 PLEASANTDALE  
427 TISDALE  
457 CONNAUGHT  
460 BIRCH HILLS

Signed on behalf of the Minister on this 25<sup>th</sup> day of April 2025.



Lana Eering  
Government of Saskatchewan  
Ministry of Highways  
Manager, Highway Hotline/Emergency Planning Officer

The following Provincial Highways **are** subject to SPECIAL Spring Road Restrictions.

**Highway No. 55** - (old Hwy 55) From Jct Hwy 240 to 3 km West (Marchant Grove) **SPECIAL RESTRICTIONS** – 4.5 kg per mm (252 lbs/in) width of tire (manufacturer’s stamped dimension) on any wheel to a maximum GVW of 22,686 kg (50,000 lbs), including the steering axle.

**Highway No. 240** - From Jct Hwy 55 to Prince Albert National Park **SPECIAL RESTRICTIONS** – 4.5 kg per mm (252 lbs/in) width of tire (manufacturer’s stamped dimension) on any wheel to a maximum GVW of 22,686 kg (50,000 lbs), including the steering axle.

The following Provincial Highways **are** subject to Spring Road Restrictions.

No. 2	From U.S. Border to St. Victor Access	No. 26	From 14 km North of Jct Hwy 304 to South Jct of 55 and 26 south of Peerless
No. 3	From Manitoba Border to Hudson Bay	No. 28	From Jct Hwy 18 to Jct Hwy 377
No. 4	From Jct Hwy 55 to Jct Hwy 224	No. 30	From Eston Regional Park to Brock ( <b>SPECIAL RESTRICTION – 8,000kgs</b> )
No. 5	From Manitoba Border to Jct Hwy 57	No. 31	From Jct Hwy 4 to 23.1 km west ( <b>SPECIAL RESTRICTION – 8,000kgs</b> )
No. 8	From Norquay to 14.6 km. South of Forest Boundary ( <b>SPECIAL RESTRICTIONS -8,000kgs from Midnight Mar. 14 to Midnight Nov. 15</b> )	No. 31	From Herschel to grid 656
No. 9	From Hudson Bay to Ruby Lake Access	No. 31	From 29.6 km East of Plenty to Plenty ( <b>SPECIAL RESTRICTION – 8,000kgs</b> )
No. 13	Cadillac to Junction 37	No. 34	From U.S. Border to Jct Hwy 13
No. 13	North Jct Hwy 21 to Alberta Border	No. 35	From Jct Hwy 48 to Jct Hwy 1
No. 15	From Jct Hwy 16 to Jct Hwy 9 ( <b>SPECIAL RESTRICTION – 8,000kgs</b> )	No. 35	From 3.8 km North of Jct Hwy 1 to Jct Hwy 10
No. 15	From Jct Hwy 2 to 27.8 km West	No. 35	From Jct Hwy 306 to Jct Hwy 33
No. 15	From Farrerdale to Jct Hwy 11	No. 35	From Jct Hwy 33 to Jct Hwy 48
No. 18	From Ponteix Grid to Jct. 13 at Robsart	No. 35	From 3.8 km North of Jct Hwy 1 to Jct Hwy 10
No. 18	From Jct Hwy 2 to Ponteix Grid	No. 35	From White Fox to Roads End
	From West Jct Hwy 36 to Rockglen	No. 36	From U.S. Border to Jct Hwy 2
No. 18	From Jct Hwy 6 to East Jct Hwy 36	No. 37	U.S. Border to Climax
No. 18	From Jct Hwy 35 to Jct Hwy 6	No. 37	2.35 km North of Gull Lake to Cabri
No. 19	From East Jct Hwy 42 to Elbow Access	No. 42	From Riverhurst Ferry to Jct Hwy 373
No. 19	From Jct Hwy 18 to North Jct Hwy 363	No. 42	From Jct Hwy 373 to Lucky Lake ( <b>SPECIAL RESTRICTION – 8,000kgs</b> )
No. 20	From Middle Lake to Jct Hwy 320	No. 42	From Lucky Lake to Jct Hwy 342
No. 20	From 1.6 km North of Pilger to Middle Lake	No. 42	From its Jct with Hwy 44 (km 43.68) to its Jct with Hwy 15 (km 59.92), for a total of 16.2 km. ( <b>SPECIAL RESTRICTION – 8,000kgs</b> )
No. 20	From Jct Hwy 320 to Jct Hwy 3	No. 42	from the Jct of 367 to the Jct North Jct of 19.
No. 21	U.S. Border to West Jct Hwy 13	No. 42	From Jct Hwy 342 to Dinsmore
No. 21	East Jct Hwy 13 to Cypress Park Entrance	No. 43	From Jct Hwy 4 to Jct Hwy 19
No. 21	Jct Hwy 1 to 12 km South of Leader	No. 44	From Jct Hwy 19 to Danielson Provincial Park Access ( <b>SPECIAL RESTRICTION – 8,000kgs</b> )
No. 22	From Manitoba Border to South Jct Hwy 8	No. 44	From Hwy 44 from 1.12km west of the junction of Hwy 219 to Hwy 45
No. 22	From Jct Hwy 9 to Jct Hwy 47	No. 44	From Dinsmore east to Macrorie
No. 22	From Jct Hwy 47 to East Jct grid 617		
No. 22	From Earl Grey to Jct Hwy 20		
No. 24	From 11 km North of Spiritwood to Leoville		
No. 24	From Leoville to Chitek Lake		
No. 25	From Jct Hwy 3 to Jct Hwy 2		

No. 44	South Jct Hwy 21 to 3.33 km West of Mantario (SPECIAL RESTRICTION – 8,000kgs)	No. 271	Maple Creek (Jct Hwy 21) to Fort Walsh
No. 44	3.33 kms West of Mantario to Alsask	No. 301	From Jct Hwy 1 from 200 metres north of the bridge to Buffalo Pound Park
No. 44	From 3 km south-west of Davidson (Meridian Road) to Jct. Hwy 19 (SPECIALRESTRICTION – 8,000kgs)	No. 302	From Weldon Ferry to 21 km East of Prince Albert (SPECIALRESTRICTION – 8,000kgs)
No. 44	From Dinsmore to Jct Hwy 4	No. 306	From Jct Hwy 35 to Riceton
No. 44	From 3.2 Km's West of Eston to N. Jct. of 21	No. 306	From Riceton to Jct Hwy 6 (SPECIAL RESTRICTION – 8,000kgs)
No. 44	From 400 Meters West of the North Jct Hwy 21 to the South Jct Hwy 21	No. 307	From Jct Hwy 7 to 13 km North of Jct Hwy 7
No. 45	From Birsay to Jct Hwy 15	No. 308	From Jct Hwy 8 to Grid 600 (SPECIAL RESTRICTION – 8,000kgs)
No. 45	From 8 kms South of Swanson to Delisle	No. 308	From Grid 600 to Manitoba Border
No. 47	From Handsworth Road to Jct Hwy 1	No. 310	From Jct Hwy 16 to Jct Hwy 5
No. 52	From Willowbrook to Homefield	No. 312	From Wakaw to Rosthern
No. 52	From Homefield to Jct Hwy 15	No. 317	From Jct 51 to 12 KM North
No. 55	(old Hwy 55) From Jct Hwy 55 to 3 km West (Marchant Grove)	No. 318	From 2 km N of Jct Hwy 18 to Jct Hwy 361
No. 58	From Jct Hwy 18 to Jct Hwy 13	No. 320	From Jct Hwy 20 to Domremy
No. 58	From N limits of Gravelbourg to Jct Hwy 1	No. 321	Liebenthal (Jct Hwy 21) to 7 km East of the Alberta Border
No. 80	From K-1 Mine Access to Churchbridge	No. 332	Jct Hwy 32 to 7.1 km West of Jct Hwy 32
No. 80	From North town limits of Churchbridge to Jct Hwy 10 (SPECIAL RESTRICTION – 8,000kgs)	No. 332	7.1 km West of Jct Hwy 32 to Hazlet (SPECIAL RESTRICTION – 8,000kgs)
No. 99	From Craven to Jct Hwy 6	No. 324	From Jct Hwy 378 to Mayfair
No. 102	From La Ronge Airport Access to 1.5 km N. of Nemeiben River Bridge	No. 334	From Jct Hwy 13 to 3.3 km south of Jct Hwy 339 (SEE SPECIAL RESTRICTION 8,000 Kgs)
No. 106	From Jct Hwy 928 to Creighton	No. 339	From Jct Hwy 334 to Jct Hwy 39 (SEE SPECIAL RESTRICTION 8,000 Kgs)
No. 123	From Jct Hwy 55 to E.B. Campbell Dam	No. 340	From Radisson to Hafford
No. 155	From 7.0 km North of Jct Hwy 165 to La Loche	No. 342	From Jct Hwy 42 to Jct Hwy 4
No. 167	From Sturgeon Weir River to Creighton	No. 342	From Jct Hwy 4 to Grid 647 (north of Lacadena) (SPECIAL RESTRICTION – 8,000kgs)
No. 167	From Denare Beach to Creighton	No. 343	Jct Hwy 4 to Simmie
No. 211	From Jct Hwy 11 to Blackstrap	No. 349	From Jct Hwy 35 to 15 km East of Naicam
No. 202	Jct Hwy 2 to Buffalo Pound Park	No. 350	From U.S. Border to Jct Hwy 18
No. 211	From Jct Hwy 11 to Blackstrap	No. 355	From Meath Park to Sturgeon Lake Reserve
No. 212	From Jct Hwy 11 to Fort Carlton Park	No. 357	From Togo to Jct Hwy 8
No. 220	From Jct Hwy 20 to Jct 322	No. 358	From Wood Mountain to Limerick
No. 221	Jct Hwy 21 to Cypress Hills Park Gate	No. 361	From Manitoba Border to Jct 9
No. 225	Hwy 225 from jct. of hwy 2 from Grid Road is spring road bans and from Grid to hwy 312.	No. 363	From 43 km West of Moose Jaw to Neidpath
No. 225	Hwy 225 from it's junction rural municipal road at the E of the NE7-44-27-W2 (east of St. Isidore-de-Bellevue) to the junction with the rural municipal road at the E. of the NE11-27-28-W2. (MO/3-969-2021-WI1) to is 9-month primary.	No. 363	Neidpath to Jct Hwy 4
No. 229	From Jct Hwy 9 to Jct Hwy 47	No. 364	From Km 19.08 to Km 36.45
No. 247	From Jct Hwy 9 to Jct Hwy 47	No. 365	From Manitou Beach to Plunkett
No. 255	From Jct Hwy 55 to Tobin Lake	No. 367	From Jct Hwy 42 to Jct Hwy 19
		No. 371	Jct Hwy 21 to Alberta Border (SPECIAL RESTRICTION – 8,000kgs)
		No. 373	From Jct Hwy 42 to Birsay
		No. 374	From Jct Hwy 14 to Tramping Lake

No. 376 From Asquith to Jct Hwy 40  
 No. 377 From Jct Hwy 28 to Jct Hwy 6  
 No. 378 From Jct Hwy 4 to Jct Hwy 324  
 No. 378 From Jct Hwy 324 to Spiritwood

No. 379 McMahon to 14.66 km East of Junction No. 4  
 No. 908 From Jct Hwy 155 to Ile-a-la-Crosse  
 No. 953 From Jct Hwy 2 to Jct Hwy 263

**The following Access Roads are subject to Spring Road Restrictions.**

No. 1 Sintaluta Access  
 No. 1 McLean Park Access  
 No. 1 Grand Coulee Access (*SPECIAL RESTRICTION – 8,000kgs*)  
 No. 1 North urban limits of Pense  
 No. 1 Rush Lake Access  
 No. 1 Waldeck Access  
 No. 1 Webb Access from Km 0 to 1.87 Km  
 No. 1 Tompkins Access  
 No. 1 Piapot Access  
 No. 2 Imperial Access  
 No. 2 Simpson Access  
 No. 2 Meacham Access  
 No. 2 Dana Access  
 No. 2 Wakaw Lake Park Access  
 No. 2 Cudworth Access  
 No. 2 Sun Valley Beach Access  
 No. 2 Holdfast Access  
 No. 2 Penzance Access  
 No. 2 Liberty Access  
 No. 2 Weyakwin Access  
 No. 2 Ramsey Bay Access  
 No. 2 Paddockwood Access (*SPECIAL RESTRICTION – 8,000kgs*)  
 No. 3 Prairie River Access  
 No. 3 Crooked River Access  
 No. 3 Eldersley Access  
 No. 3 Valparaiso Access  
 No. 3 Weldon Access  
 No. 3 Brancepeth Access  
 No. 3 30 Metres N of the railway crossing at Birch Hills  
 No. 3 Shell Lake Access  
 No. 3 Medstead Access  
 No. 3 Monte Nebo Access  
 No. 3 Turtle Lake South Bay Access  
 No. 4 Cando Access  
 No. 4 Metinota Access

No. 4 Blumehof Access (*SPECIAL RESTRICTION – 8,000kgs*)  
 No. 4 Rhineland Access  
 No. 4 Aquadeo Access  
 No. 4 Meadow Lake Airport – 220 meters West of Jct Hwy 4(Meadow Lake Urban Limits) to Meadow Lake Airport  
 No. 5 Veregin Access  
 No. 5 Mikado Access  
 No. 5 Kuroki Access  
 No. 5 From Leroy to 6.45 kms West  
 No. 5 St. Gregor Access  
 No. 5 Peterson Access  
 No. 5 St. Denis Access  
 No. 6 Lac Vert Access  
 No. 6 Pleasantdale Access  
 No. 6 Fairy Glen Access  
 No. 8 Wroxton Access  
 No. 8 Tantallon Access (*SPECIAL RESTRICTION – 8,000kgs*)  
 No. 9 Dubuc Access  
 No. 9 Crystal Lake Access  
 No. 9 Ebenezer Access  
 No. 9 Endeavour Access  
 No. 9 Gorlitz Access  
 No. 9 Tadmor Access  
 No. 11 Kenaston bypass/alternate  
 No. 11 Hanley Access  
 No. 11 Dundurn Access  
 No. 11 Gruenthal Access  
 No. 11 Blumenthal Access  
 No. 11 Neunlage Access  
 No. 11 Bethune Access  
 No. 11 Findlater Access  
 No. 11 Findlater Service Road  
 No. 11 Aylesbury Access  
 No. 11 Craik Access  
 No. 11 Girvin Access  
 No. 11 Davidson South

No. 11	Macdowell Access	No. 22	Earl Grey Service Road
No. 12	Gruenfeldt Access	No. 23	Caragana Access
No. 12	Waldheim Access ( <i>SPECIAL RESTRICTION – 8,000kgs</i> )	No. 23	Zenon Park Access
No. 13	Pangman Access	No. 23	Weekes Access
No. 13	Khediye Access	No. 25	Birch Hills Access
No. 13	Trossachs Access	No. 25	Hagen Access
No. 13	Bellegarde Access ( <i>SPECIAL RESTRICTION – 8,000kgs</i> )	No. 27	Aberdeen Access
No. 13	Arcola Access	No. 31	Herschel Access
No. 13	Forget Access ( <i>SPECIAL RESTRICTION – 8,000kgs</i> )	No. 33	Osage Access Road
No. 14	Senlac Access	No. 35	Wishart Access
No. 15	Service Road – All thin membrane surfaced roads from Fenwood to Leross	No. 35	Sylvania Access
No. 15	Punnichy Access	No. 35	Ridgedale Access
No. 15	Conquest Access	No. 35	Aylsham Access ( <i>SPECIAL RESTRICTION – 8,000kgs</i> )
No. 15	Milden Access	No. 39	Mc Taggart Service Road
No. 15	Sovereign Access	No. 39	Wilcox Service Road
No. 15	Semans Access	No. 39	Roche Percee Access
No. 16	Jansen Access	No. 40	Speers Access
No. 16	Guernsey Access	No. 40	David Laird Campground Access ( <i>YEAR ROUND RESTRICTION – 8,000kgs</i> )
No. 16	Plunkett Access	No. 40	Leask Access
No. 16	Viscount Access	No. 40	Marcelin Access
No. 16	Bradwell Access ( <i>SPECIAL RESTRICTION – 8,000kgs</i> )	No. 41	Hwy 41 North to Aberdeen
No. 16	Dalmeny Access from Jct 16 to Jct 305	No. 43	Palmer Access
No. 18	Beaubier	No. 44	Plato Access
No. 18	Gladmar Access	No. 44	Glidden Access
No. 18	Big Beaver Access	No. 45	Coteau Beach Access
No. 18	McCord Access	No. 48	Fairlight Access
No. 19	Strongfield Access	No. 48	Kendal Service Road
No. 19	Hawarden Access	No. 48	Odessa Service Road
No. 19	Kincaid Access	No. 48	Vibank Service Road
No. 20	Middle Lake Access	No. 49	Hazel Dell Access
No. 20	St. Benedict Access	No. 49	Hyas Access
No. 20	Tway Access	No. 49	Stenen Access
No. 20	Duval Access	No. 51	Handel Access
No. 20	Bulyea Access	No. 51	Ruthilda Access
No. 21	Golden Prairie Access	No. 51	Major Access
No. 21	Mendham Access ( <i>JCT 21 to 8.1 KM West</i> ) ( <i>SPECIAL RESTRICTION – 8,000kgs</i> )	No. 55	Love Access
No. 22	Atwater Access	No. 55	Garrick Access
No. 22	Grayson Access	No. 55	Choiceland Access
No. 22	Gerald Access	No. 55	Snowden Access
No. 22	Dysart Access	No. 80	Yarbo Access
		No. 123	Cumberland House Bridge to the Cumberland House Airport
		No. 155	Buffalo Narrows Airport
		No. 219	Glenside Access

No. 219	Riverside Estate Access	No. 322	Saskatchewan Beach Access
No. 219	Furdaie Access	No. 349	Saint-Front Access
No. 312	Laird Access ( <i>SPECIAL RESTRICTION – 8,000kgs</i> )	No. 363	Coderre Access
No. 322	Kanata Valley Access	No. 363	Shamrock Access
		No. 364	Edenwold Access

**The following Rural Municipalities are subject to Spring Road Restrictions**

6	CAMBRIA	135	LAWTONIA	246	ITUNA BON ACCORD
7	SOURIS VALLEY	142	ENTERPRISE	248	TOUCHWOOD
8	LAKE ALMA	151	ROCANVILLE	250	LAST MOUNTAIN VALLEY
10	HAPPY VALLEY	153	WILLOWDALE	251	BIG ARM
11	HART BUTTE	154	ELCAPO	255	COTEAU
12	POPLAR VALLEY	155	WOLSELEY	256	KING GEORGE
38	LAURIER	156	INDIAN HEAD	260	NEWCOMBE
40	BENGOUGH	157	SOUTH QU'APPELLE	271	COTE
42	WILLOW BUNCH	159	SHERWOOD	273	SLIDING HILLS
43	OLD POST	164	CHAPLIN	274	GOOD LAKE
45	MANKOTA	166	EXCELSIOR	275	INSINGER
49	WHITE VALLEY	181	LANGENBURG	276	FOAM LAKE
51	RENO	184	GRAYSON	277	EMERALD
65	TECUMSEH	187	NORTH QU'APPELLE	279	MOUNT HOPE
67	WEYBURN	189	LUMSDEN	280	WREFORD
68	BROKENSHELL	190	DUFFERIN	281	WOOD CREEK
69	NORTON	191	MARQUIS	282	MCCRANEY
71	EXCEL	193	EYEBROW	283	ROSEDALE
72	LAKE OF THE RIVERS	194	ENFIELD	284	RUDY
73	STONEHENGE	214	CANA	285	FERTILE VALLEY
94	HAZELWOOD	215	STANLEY	301	ST. PHILIPS
95	GOLDEN WEST	216	TULLYMET	303	KEYS
96	FILLMORE	217	LIPTON	304	BUCHANAN
97	WELLINGTON	218	CUPAR	307	ELFROS
103	SUTTON	219	LONGLAKETON	309	PRAIRIE ROSE
104	GRAVELBOURG	220	MCKILLOP	310	USBORNE
110	PIAPOT	223	HURON	312	MORRIS
122	MARTIN	224	MAPLE BUSH	313	LOST RIVER
123	SILVERWOOD	225	CANAAN	314	DUNDURN
124	KINGSLEY	226	VICTORY	315	MONTROSE
125	CHESTER	228	LACADENA	316	HARRIS
126	MONTMARTRE	229	MIRY CREEK	320	OAKDALE
127	FRANCIS	230	CLINTWORTH	331	LIVINGSTON
128	LAJORD	241	CALDER	333	CLAYTON
132	HILLSBOROUGH	243	WALLACE	334	PREECEVILLE
133	RODGERS	244	ORKNEY	335	HAZEL DELL
134	SHAMROCK	245	GARRY	336	SASMAN



338	LAKESIDE	395	PORCUPINE	493	SHELLBROOK
339	LEROY	399	LAKE LENORE	494	CANWOOD
340	WOLVERINE	400	THREE LAKES	496	SPIRITWOOD
341	VISCOUNT	401	HOODOO	497	MEDSTEAD
343	BLUCHER	402	FISH CREEK	498	PARKDALE
344	CORMAN PARK	403	ROSTHERN	499	MERVIN
345	VANSCOY	406	MAYFIELD	501	FRENCHMAN BUTTE
346	PERDUE	409	BUFFALO	520	PADDOCKWOOD
347	BIGGAR	410	ROUND VALLEY	521	DISTRICT OF LAKELAND
349	GRANDVIEW	428	STAR CITY	555	BIG RIVER
350	MARIPOSA	431	ST. LOUIS	561	LOON LAKE
351	PROGRESS	437	NORTH BATTLEFORD	588	MEADOW LAKE
352	HEART'S HILL	438	BATTLE RIVER	622	BEAVER RIVER
366	KELVINGTON	440	HILLSDALE		
368	SPALDING	461	PRINCE ALBERT		
369	ST. PETER	463	DUCK LAKE		
370	HUMBOLDT	464	LEASK		
371	BAYNE	466	MEETING LAKE		
372	GRANT	467	ROUND HILL		
373	ABERDEEN	468	MEOTA		
376	EAGLE CREEK	470	PAYNTON		
377	GLENSIDE	486	MOOSE RANGE		
378	ROSEMOUNT	487	NIPAWIN		
381	GRASS LAKE	488	TORCH RIVER		
382	EYE HILL	490	GARDEN RIVER		
394	HUDSON BAY	491	BUCKLAND		



**The following section is not part of the Order but is appended as INFORMATION:  
Special Weight Restrictions on Selected Provincial Highways.**

**The following highways are subject to reduced weights, year round, by regulation in accordance with the *Vehicle Weight and Dimension Regulations, 2010***

Hwy	From	To	Description
955	South abutment of the Douglas River Bridge	Northern most limit of Highway 955	Maximum GVW 41 500 kg

**The following BRIDGES are restricted by Minister's ORDER to a maximum gross vehicle weight of Secondary Weights year-round. Winter Weights are not allowed.**

Hwy	Bridge Location Description
2	Bridge over Little Red River from Southern Bridge Abutment to Northern Bridge Abutment. Bridge is located approximately 4.4 km south of Jct. with Hwy 355 and Hwy 2 near Spruce Home. <b>Bridge is located on East Frontage Road.</b>
3	Bridge over Red Deer River from Eastern Bridge Abutment to Western Bridge Abutment located approximately .5km west of Erwood, Sk.
4 Metinota Access	Bridge over Jackfish Narrows from Eastern Bridge Abutment to Western Bridge Abutment. Bridge is located in access road approximately 3.1km west of the Jct. with Hwy 4. <b>Bridge is located on access road.</b>
312 Gabriel Dumont Bridge	Truss Bridge over South Saskatchewan River from Eastern Bridge Abutment to Western Bridge Abutment.
334	Bridge over Willow Creek from Eastern Bridge Abutment to Western Bridge Abutment. Bridge is located approximately 18.6 km east of Avonlea, sk. and the Jct. with Hwy 339 and Hwy 334.
919	Bridge over Martineau River from Southern Bridge Abutment to Northern Bridge Abutment. Bridge is located approximately 39.5km northwest of the Jct. with Hwy 21 and Hwy 950
935	Bridge over Morin River from the Southern Bridge Abutment to the Northern Bridge Abutment. Bridge is located approximately 7km north of the Jct. with Hwy 165 and Hwy 935.
955 Clearwater Truss Bridge	Truss Bridge over Clearwater River from Southern Bridge Abutment to Northern Bridge Abutment. Bridge is located approximately - 62 km north of Jct 155 and 955 to the Clearwater Bridge.
980 Elbow Lake Access	Bridge over Midnight Creek from Eastern Bridge Abutment to Western Bridge Abutment. Bridge is located approximately .3 km west of Elbow Lake, Sk.. <b>The bridge is located on Spirit Lake/Elbow Lake access road.</b>

**The following BRIDGES are restricted by Minister's ORDER to a maximum gross vehicle weight of Primary Weights year-round. Winter Weights are not allowed.**

Hwy	Bridge Location Description
2	Northbound Bridge over Hwy 1 from Southern Bridge Abutment to Northern Bridge Abutment. Bridge is located North of Moose Jaw at Jtc. with Hwy 1 and Hwy 2
2	Southbound Bridge over Hwy 1 from Southern Bridge Abutment to Northern Bridge Abutment. Bridge is located north of Moose Jaw Sk. at Jtc. with Hwy 1 and Hwy 2
6	Bridge over Barrier River Overflow from Southern Bridge Abutment to Northern Bridge Abutment. Bridge is located approximately 25.7 km south of Melfort, Sk.

The following highways are restricted by Minister's ORDER to a maximum gross vehicle weight of 8 000 kilograms year round.

Highway	From	To
1 Caron Access	Jct Hwy 1	Hamlet of Caron
1 Grand Coulee Access	Jct Hwy 1	Village of Grand Coulee
2 Eastside Service Road near Prince Albert	Jct Boundary Street East Service Rd north	Jct Township Road (approx. 2.4 kms)
4 Blumenhof Access	Jct Hwy 4 east	Blumenhof
6 Leroy Access	Jct Hwy 6	Town of Leroy
8 Tantallon Access	Jct. Hwy 8	Village of Tantallon
12 Hepburn Access	Jct. Hwy 12	Village of Hepburn
12 Waldheim Access	Jct. Hwy 12	100 meters west of the west boundary of NW 15-42-5 W3M in the town of Waldheim.
13 Bellegarde Access	Jct. Hwy 13	Bellegarde
13 Forget Access	Jct. Hwy 13	The Village of Forget
15	Jct. Hwy 16	Jct. Hwy 9
16 Bradwell Access	Jct. Hwy 16	Village of Bradwell
21 Mendham Access	Jct Hwy 21 Mendham Access	Intersection with the North-South portion of the Municipal Alternate Truck Route
30	Eston Regional Park located at the southwest corner of Section 20, Township 23, Range 20, West 3rd Meridian	The jct. of municipal Hwy located at the north-east corner of Section 34, Township 28, Range 20, West 3rd Meridian
31	Jct. Hwy 4	Herschel Access Road
31	Grid 656 at NW corner of Section 34, Township 31, Range 17, west of the 3rd Meridian	The intersection of the Plenty grid at the NW corner, Section 21, Township 32, Range 19, west of the 3rd Meridian
39 Bienfait Access	Jct Hwy 39	Jct Hwy 18 (In the Town of Bienfait)
40 David Laird Campsite Road	Jct No. Hwy 40	Jct Hwy No. 16
41 Alvena Access	Jct Hwy 41	2nd Avenue in Village of Alvena
42	Jct Hwy 42 - Keeler Service Road/Railway Ave. S.	Keeler Service Road/Railway Ave. to RM Road 643
42 (1)	Jct Hwy 373	Jct Hwy 45 in the Town of Lucky Lake

42	From its Jct with Hwy 44 (km 43.68)	its Jct with Hwy 15 (km 59.92), for a total of 16.2 km.
44(1)	<i>Jct Hwy 19</i>	<i>Junction with the Danielson Provincial Park Access located in the southeast of Section 32, Township 26, Range 6, West of the 3rd Meridian.</i>
44(1)	<i>Jct Hwy 21</i>	<i>Westerly to the Jct with the municipal road located in the NE 1/4 of Section 24, Township 26, Range 27, west of the 3rd Meridian</i>
44(1)	<i>Jct with the municipal road located at the SW 1/4 of Section 26, Township 26, Range 27, west of the 3rd Meridian</i>	<i>Jct with the municipal road located east of Section 31, Township 26, Range 27, west of the 3rd Meridian</i>
306	Riceton	Jct Hwy 6
308	Jct Hwy 8	Jct with Primary Grid 600
310	Jct of Grid 743	Jct of Hwy No. 16
312 Laird Access	Jct Hwy 312	The Village of Laird
332	7.1 km west of Jct Hwy 32	The Village of Hazlet except for that portion between the east and west Jct of Hwy 37
334	Jct Hwy 13	3.3 km south of Jct Hwy 339
339	Village of Avonlea	Jct. of Hwy 39 except for that portion from 11.4 km west of Avonlea to 21.2 km west of Avonlea
342	Jct Hwy 4	Jct of Primary Grid 647 north of Lacadena
371	Jct Hwy 21	Alberta Border

**The following highways are restricted by Minister's ORDER to a maximum gross vehicle weight of 8 000 kilograms from March 1<sup>st</sup> to November 30<sup>th</sup> each year.**

<b>Hwy</b>	<b>From</b>	<b>To</b>
302	Cecil Ferry Road at the SE corner of Section 22, Township 48, Range 24, west of the 2nd Meridian	Jct of the municipal road located at SE corner of Section 5, Township 49, Range 22, west of second Meridian (located by the Weldon Ferry)

**The following access road is restricted by Minister's ORDER to a maximum gross vehicle weight of 8 000 kilograms from March 1<sup>st</sup> to November 30<sup>th</sup> each year.**

<b>Hwy</b>	<b>From</b>	<b>To</b>
2 Paddockwood Access	Jct Hwy 2	Grid Road intersection NE Section 23, Township 52, Range 25, W2nd Meridian

The following highway is restricted by Minister's ORDER to a maximum gross vehicle weight of 8 000 kilograms from March 15<sup>th</sup> to November 15<sup>th</sup> each year and *when the ambient temperature is above -6°C*.

Hwy	From	To
8	0.5 km North of Junction Highway 49 at Norquay	The community of Swan Plain at the south boundary of SE 27-36-1-W2M

The following Access Road is restricted by Minister's ORDER to a maximum gross vehicle weight of 8 000 kilograms from February 24 to November 15<sup>th</sup> each year and *when the ambient temperature is above -6°C*.

Hwy	From	To
35 Aylsham Access	Hwy 35 (NW corner of section 32, township 48, range 14, west of second Meridian)	Aylsham (NE corner of section 34, township 48, range 13, west of second Meridian)

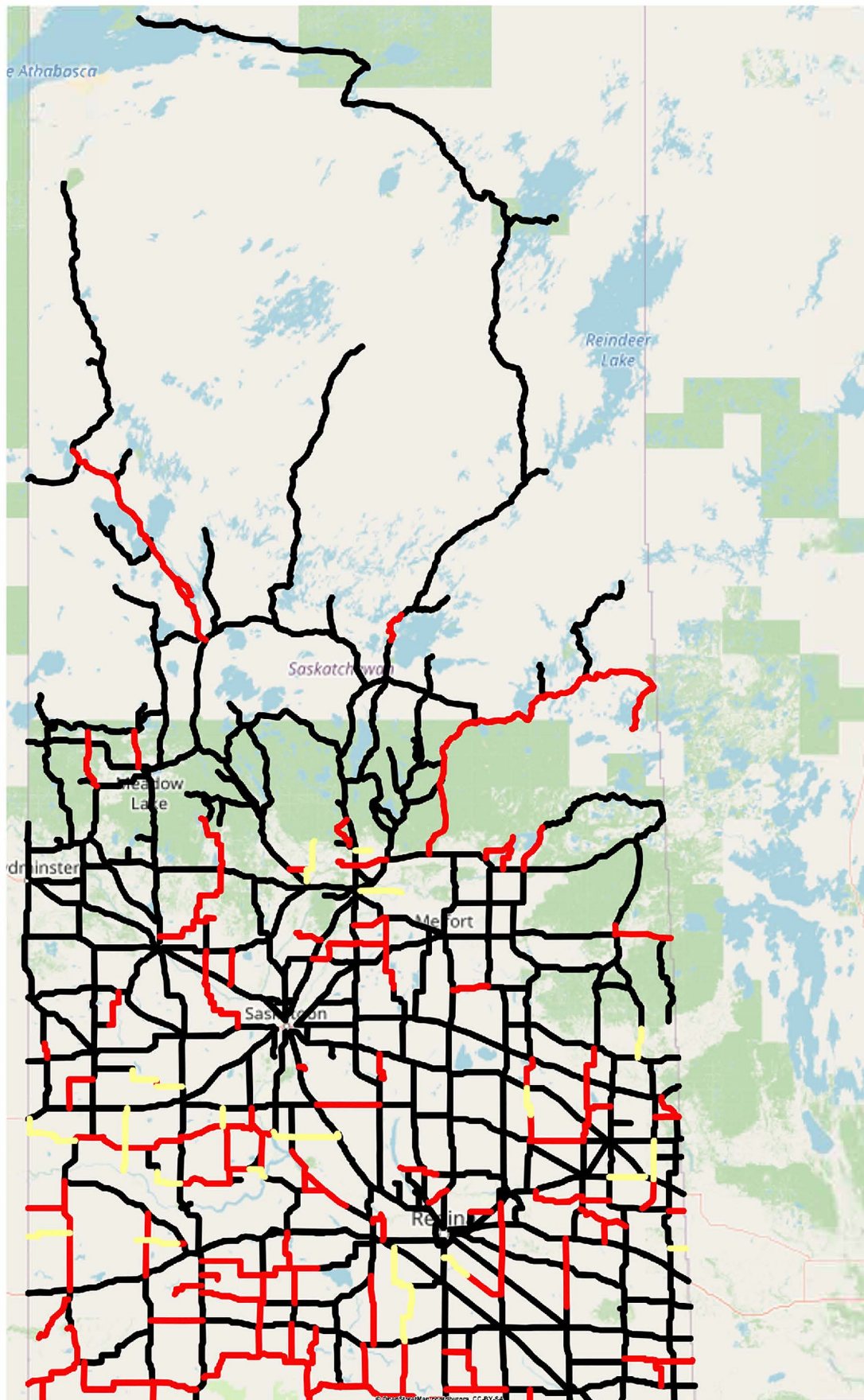
The following highway is restricted by Minister's ORDER to a maximum gross vehicle weight of 75% of primary highway weights, except during winter weight season, when winter secondary weights shall apply.

Hwy	From	To
240	Junction Highway 55	No. 240 - From Jct Hwy 55 to Prince Albert National Park SPECIAL RESTRICTIONS – 4.5 kg per mm (252 lbs/in) width of tire (manufacturer's stamped dimension) on any wheel to a maximum GVW of 22,686 kg (50,000 lbs), including the steering axle.

For detailed information on Rural Roads, call the local rural municipality or for Provincial Highway information email the Highway Hotline [hotline@gov.sk.ca](mailto:hotline@gov.sk.ca). The rural municipality administers and maintains the alternate haul routes. They are also responsible for issuing any overweight permits associated with the alternate haul routes.

Saskatchewan Ministry of Highways and Infrastructure provides seasonal highway restriction information on the Internet at: <http://www.saskatchewan.ca/truckingweights> under Special Weights.

Truckers can also contact the Saskatchewan Ministry of Highways, Trucking inquiry line at Toll free in Saskatchewan: 1-866-933-5290 Out of Saskatchewan: 306-933-5290 email: [mhitrucking@gov.sk.ca](mailto:mhitrucking@gov.sk.ca)



### Winter Weight Season

- In Effect
- Not In Effect
- Future Restrictions

### Spring Weight Season

- No Restrictions
- Restricted
- Future Restrictions

### Special Weight Restrictions

- Special Weight Restrictions

Notes