

#### Minister's Order Pursuant to section 35(1) of "The Highways and Transportation Act, 1997"

Pursuant to section 35(1) of "The Highways and Transportation Act, 1997" it is hereby ordered that, effective as stated in this Order, **at 12:01 am, Friday April 25, 2025** until further notice, vehicles other than those exempted in Part II, section 3 (2) and 3 (5) of "The Vehicle Weight and Dimensions Regulations, 2010", shall be restricted as follows:

##### Steering Axle

- 10.0 kg per mm (560 pounds per inch) width of tire (manufacturer's stamped dimension) to a maximum of
- 5,500 kg on the steering axle for a truck or truck tractor equipped with a single steering axle.
- 11,000 kg on the steering axle group for a truck or truck tractor equipped with a tandem axle steering group.

##### Other Axles

- 6.25 kg per mm (350 pounds per inch) width of tire (manufacturer's stamped dimension) to a maximum of:
- 1,650 kg (3,638 pounds) per tire, or
- 2,630 kg per tire for axles equipped with single tires with a width of 445 mm or greater.

This order does not permit the weight on any axle, axle group or vehicle from exceeding the maximum weight prescribed in the "The Vehicle Weight and Dimension Regulations, 2010" for that axle, axle group or vehicle.

The restriction does not apply to:

- Emergency vehicles,
- Ministry of Highways vehicles and municipal maintenance equipment when conducting maintenance or accessing sites on or along the restricted highway,
- SaskPower, SaskEnergy and SaskTel vehicles when accessing sites along the restricted route,
- Recreational vehicles,
- Buses,
- Farm Equipment operated or towed,
- Vehicles directly crossing a Provincial Highway at an intersecting public highway or private road.

Please note that some provincial highways and bridges are subject to special reduced or restricted weights and some are for specific periods of the year, some for precise temperatures. A detailed description of these special restrictions is listed on the last four pages of this Order.

The following Rural Municipalities **will be removed** from Spring Road Restrictions **immediately upon posting this Order.**

**RM No.**

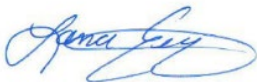
18	LONE TREE	129	BRATT'S LAKE
64	BROCK	130	REDBURN
77	WISE CREEK	158	EDENWOLD
108	BONE CREEK	317	MARRIOTT
121	MOOSOMIN	405	GREAT BEND

The following Rural Municipalities **will be removed** from Spring Road Restrictions **at 12:01 am, Friday April 25, 2025.**

**RM No.**

411 SENLAC

Signed on behalf of the Minister on this 22<sup>nd</sup> day of April 2025.



Lana Eering  
Government of Saskatchewan  
Ministry of Highways  
Manager, Highway Hotline/Emergency Planning Officer

The following Provincial Highways **are** subject to SPECIAL Spring Road Restrictions.

**Highway No. 55** - (old Hwy 55) From Jct Hwy 240 to 3 km West (Marchant Grove) **SPECIAL RESTRICTIONS** – 4.5 kg per mm (252 lbs/in) width of tire (manufacturer’s stamped dimension) on any wheel to a maximum GVW of 22,686 kg (50,000 lbs), including the steering axle.

**Highway No. 240** - From Jct Hwy 55 to Prince Albert National Park **SPECIAL RESTRICTIONS** – 4.5 kg per mm (252 lbs/in) width of tire (manufacturer’s stamped dimension) on any wheel to a maximum GVW of 22,686 kg (50,000 lbs), including the steering axle.

The following Provincial Highways **are** subject to Spring Road Restrictions.

No. 2	From U.S. Border to St. Victor Access	No. 26	From 14 km North of Jct Hwy 304 to South Jct of 55 and 26 south of Peerless
No. 3	From Manitoba Border to Hudson Bay	No. 28	From Jct Hwy 18 to Jct Hwy 377
No. 4	From Jct Hwy 55 to Jct Hwy 224	No. 30	From Eston Regional Park to Brock ( <b>SPECIAL RESTRICTION – 8,000kgs</b> )
No. 5	From Manitoba Border to Jct Hwy 57	No. 31	From Jct Hwy 4 to 23.1 km west ( <b>SPECIAL RESTRICTION – 8,000kgs</b> )
No. 8	<b>From Norquay to 14.6 km. South of Forest Boundary (SPECIAL RESTRICTIONS -8,000kgs from Midnight Mar. 14 to Midnight Nov. 15)</b>	No. 31	From Herschel to grid 656
No. 9	From Hudson Bay to Ruby Lake Access	No. 31	From 29.6 km East of Plenty to Plenty ( <b>SPECIAL RESTRICTION – 8,000kgs</b> )
No. 13	Cadillac to Junction 37	No. 34	From U.S. Border to Jct Hwy 13
No. 13	North Jct Hwy 21 to Alberta Border	No. 35	From Jct Hwy 48 to Jct Hwy 1
No. 15	From Jct Hwy 16 to Jct Hwy 9 ( <b>SPECIAL RESTRICTION – 8,000kgs</b> )	No. 35	From 3.8 km North of Jct Hwy 1 to Jct Hwy 10
No. 15	From Jct Hwy 2 to 27.8 km West	No. 35	From Jct Hwy 306 to Jct Hwy 33
No. 15	From Farrerdale to Jct Hwy 11	No. 35	From Jct Hwy 33 to Jct Hwy 48
No. 18	From Ponteix Grid to Jct. 13 at Robsart	No. 35	From 3.8 km North of Jct Hwy 1 to Jct Hwy 10
No. 18	From Jct Hwy 2 to Ponteix Grid	No. 35	From White Fox to Roads End
	From West Jct Hwy 36 to Rockglen	No. 36	From U.S. Border to Jct Hwy 2
No. 18	From Jct Hwy 6 to East Jct Hwy 36	No. 37	U.S. Border to Climax
No. 18	From Jct Hwy 35 to Jct Hwy 6	No. 37	2.35 km North of Gull Lake to Cabri
No. 19	From East Jct Hwy 42 to Elbow Access	No. 42	From Riverhurst Ferry to Jct Hwy 373
No. 19	From Jct Hwy 18 to North Jct Hwy 363	No. 42	<b>From Jct Hwy 373 to Lucky Lake (SPECIAL RESTRICTION – 8,000kgs)</b>
No. 20	From Middle Lake to Jct Hwy 320	No. 42	From Lucky Lake to Jct Hwy 342
No. 20	From 1.6 km North of Pilger to Middle Lake	No. 42	From its Jct with Hwy 44 (km 43.68) to its Jct with Hwy 15 (km 59.92), for a total of 16.2 km. ( <b>SPECIAL RESTRICTION – 8,000kgs</b> )
No. 20	From Jct Hwy 320 to Jct Hwy 3	No. 42	from the Jct of 367 to the Jct North Jct of 19.
No. 21	U.S. Border to West Jct Hwy 13	No. 42	From Jct Hwy 342 to Dinsmore
No. 21	East Jct Hwy 13 to Cypress Park Entrance	No. 43	From Jct Hwy 4 to Jct Hwy 19
No. 21	Jct Hwy 1 to 12 km South of Leader	No. 44	<b>From Jct Hwy 19 to Danielson Provincial Park Access (SPECIAL RESTRICTION – 8,000kgs)</b>
No. 22	From Manitoba Border to South Jct Hwy 8	No. 44	From Hwy 44 from 1.12km west of the junction of Hwy 219 to Hwy 45
No. 22	From Jct Hwy 9 to Jct Hwy 47	No. 44	From Dinsmore east to Macrorie
No. 22	From Jct Hwy 47 to East Jct grid 617		
No. 22	From Earl Grey to Jct Hwy 20		
No. 24	From 11 km North of Spiritwood to Leoville		
No. 24	From Leoville to Chitek Lake		
No. 25	From Jct Hwy 3 to Jct Hwy 2		

- No. 44 South Jct Hwy 21 to 3.33 km West of Mantario  
*(SPECIAL RESTRICTION – 8,000kgs)*
- No. 44 3.33 kms West of Mantario to Alsask
- No. 44 From 3 km south-west of Davidson (Meridian Road) to Jct. Hwy 19 *(SPECIALRESTRICTION – 8,000kgs)*
- No. 44 From Dinsmore to Jct Hwy 4
- No. 44 From 3.2 Km's West of Eston to N. Jct. of 21
- No. 44 From 400 Meters West of the North Jct Hwy 21 to the South Jct Hwy 21
- No. 45 From Birsay to Jct Hwy 15
- No. 45 From 8 kms South of Swanson to Delisle
- No. 47 From Handsworth Road to Jct Hwy 1
- No. 52 From Willowbrook to Homefield
- No. 52 From Homefield to Jct Hwy 15
- No. 55 (old Hwy 55) From Jct Hwy 55 to 3 km West (Marchant Grove)
- No. 58 From Jct Hwy 18 to Jct Hwy 13
- No. 58 From N limits of Gravelbourg to Jct Hwy 1
- No. 80 From K-1 Mine Access to Churchbridge
- No. 80 *From North town limits of Churchbridge to Jct Hwy 10 (SPECIAL RESTRICTION – 8,000kgs)*
- No. 99 From Craven to Jct Hwy 6
- No. 102 From La Ronge Airport Access to 1.5 km N. of Nemeiben River Bridge
- No. 106 From Jct Hwy 928 to Creighton
- No. 123 From Jct Hwy 55 to E.B. Campbell Dam
- No. 155 From 7.0 km North of Jct Hwy 165 to La Loche
- No. 167 From Sturgeon Weir River to Creighton
- No. 167 From Denare Beach to Creighton
- No. 211 From Jct Hwy 11 to Blackstrap
- No. 202 Jct Hwy 2 to Buffalo Pound Park
- No. 211 From Jct Hwy 11 to Blackstrap
- No. 212 From Jct Hwy 11 to Fort Carlton Park
- No. 220 From Jct Hwy 20 to Jct 322
- No. 221 Jct Hwy 21 to Cypress Hills Park Gate
- No. 225 Hwy 225 from jct. of hwy 2 from Grid Road is spring road bans and from Grid to hwy 312.
- No. 225 Hwy 225 from it's junction rural municipal road at the E of the NE7-44-27-W2 (east of St. Isidore-de-Bellevue) to the junction with the rural municipal road at the E. of the NE11-27-28-W2. (MO/3-969-2021-W11) to is 9-month primary.
- No. 229 From Jct Hwy 9 to Jct Hwy 47
- No. 247 From Jct Hwy 9 to Jct Hwy 47
- No. 255 From Jct Hwy 55 to Tobin Lake
- No. 271 Maple Creek (Jct Hwy 21) to Fort Walsh
- No. 301 From Jct Hwy 1 from 200 metres north of the bridge to Buffalo Pound Park
- No. 302 From Weldon Ferry to 21 km East of Prince Albert (SPECIALRESTRICTION – 8,000kgs)
- No. 306 From Jct Hwy 35 to Riceton
- No. 306 *From Riceton to Jct Hwy 6 (SPECIAL RESTRICTION – 8,000kgs)*
- No. 307 From Jct Hwy 7 to 13 km North of Jct Hwy 7
- No. 308 *From Jct Hwy 8 to Grid 600 (SPECIAL RESTRICTION – 8,000kgs)*
- No. 308 From Grid 600 to Manitoba Border
- No. 310 From Jct Hwy 16 to Jct Hwy 5
- No. 312 From Wakaw to Rosthern
- No. 317 From Jct 51 to 12 KM North
- No. 318 From 2 km N of Jct Hwy 18 to Jct Hwy 361
- No. 320 From Jct Hwy 20 to Domremy
- No. 321 Liebenthal (Jct Hwy 21) to 7 km East of the Alberta Border
- No. 332 Jct Hwy 32 to 7.1 km West of Jct Hwy 32
- No. 332 *7.1 km West of Jct Hwy 32 to Hazlet (SPECIAL RESTRICTION – 8,000kgs)*
- No. 324 From Jct Hwy 378 to Mayfair
- No. 334 From Jct Hwy 13 to 3.3 km south of Jct Hwy 339 *(SEE SPECIAL RESTRICTION 8,000 Kgs)*
- No. 339 From Jct Hwy 334 to Jct Hwy 39 *(SEE SPECIAL RESTRICTION 8,000 Kgs)*
- No. 340 From Radisson to Hafford
- No. 342 From Jct Hwy 42 to Jct Hwy 4
- No. 342 From Jct Hwy 4 to Grid 647 *(north of Lacadena) (SPECIAL RESTRICTION – 8,000kgs)*
- No. 343 Jct Hwy 4 to Simmie
- No. 349 From Jct Hwy 35 to 15 km East of Naicam
- No. 350 From U.S. Border to Jct Hwy 18
- No. 355 From Meath Park to Sturgeon Lake Reserve
- No. 357 From Togo to Jct Hwy 8
- No. 358 From Wood Mountain to Limerick
- No. 361 From Manitoba Border to Jct 9
- No. 363 From 43 km West of Moose Jaw to Neidpath
- No. 363 Neidpath to Jct Hwy 4
- No. 364 From Km 19.08 to Km 36.45
- No. 365 From Manitou Beach to Plunkett
- No. 367 From Jct Hwy 42 to Jct Hwy 19
- No. 371 *Jct Hwy 21 to Alberta Border (SPECIAL RESTRICTION – 8,000kgs)*
- No. 373 From Jct Hwy 42 to Birsay
- No. 374 From Jct Hwy 14 to Tramping Lake

No. 376	From Asquith to Jct Hwy 40	No. 379	McMahon to 14.66 km East of Junction No. 4
No. 377	From Jct Hwy 28 to Jct Hwy 6	No. 908	From Jct Hwy 155 to Ile-a-la-Crosse
No. 378	From Jct Hwy 4 to Jct Hwy 324	No. 953	From Jct Hwy 2 to Jct Hwy 263
No. 378	From Jct Hwy 324 to Spiritwood		

**The following Access Roads are subject to Spring Road Restrictions.**

No. 1	Sintaluta Access	No. 4	Blumehof Access ( <i>SPECIAL RESTRICTION – 8,000kgs</i> )
No. 1	McLean Park Access	No. 4	Rhineland Access
No. 1	Grand Coulee Access ( <i>SPECIAL RESTRICTION – 8,000kgs</i> )	No. 4	Aquadeo Access
No. 1	North urban limits of Pense	No. 4	Meadow Lake Airport – 220 meters West of Jct Hwy 4(Meadow Lake Urban Limits) to Meadow Lake Airport
No. 1	Rush Lake Access	No. 5	Veregin Access
No. 1	Waldeck Access	No. 5	Mikado Access
No. 1	Webb Access from Km 0 to 1.87 Km	No. 5	Kuroki Access
No. 1	Tompkins Access	No. 5	From Leroy to 6.45 kms West
No. 1	Piapot Access	No. 5	St. Gregor Access
No. 2	Imperial Access	No. 5	Peterson Access
No. 2	Simpson Access	No. 5	St. Denis Access
No. 2	Meacham Access	No. 6	Lac Vert Accessc
No. 2	Dana Access	No. 6	Pleasantdale Access
No. 2	Wakaw Lake Park Access	No. 6	Fairy Glen Access
No. 2	Cudworth Access	No. 8	Wroxton Access
No. 2	Sun Valley Beach Access	No. 8	Tantallon Access ( <i>SPECIAL RESTRICTION – 8,000kgs</i> )
No. 2	Holdfast Access	No. 9	Dubuc Access
No. 2	Penzance Access	No. 9	Crystal Lake Access
No. 2	Liberty Access	No. 9	Ebenezer Access
No. 2	Weyakwin Access	No. 9	Endeavour Access
No. 2	Ramsey Bay Access	No. 9	Gorlitz Access
No. 2	Paddockwood Access ( <i>SPECIAL RESTRICTION – 8,000kgs</i> )	No. 9	Tadmore Access
No. 3	Prairie River Access	No. 11	Kenaston bypass/alternate
No. 3	Crooked River Access	No. 11	Hanley Access
No. 3	Eldersley Access	No. 11	Dundurn Access
No. 3	Valparaiso Access	No. 11	Gruenthal Access
No. 3	Weldon Access	No. 11	Blumenthal Access
No. 3	Brancepeth Access	No. 11	Neunlage Access
No. 3	30 Metres N of the railway crossing at Birch Hills	No. 11	Bethune Access
No. 3	Shell Lake Access	No. 11	Findlater Access
No. 3	Medstead Access	No. 11	Findlater Service Road
No. 3	Monte Nebo Access	No. 11	Aylesbury Access
No. 3	Turtle Lake South Bay Access	No. 11	Craik Access
No. 4	Cando Access	No. 11	Girvin Access
No. 4	Metinota Access	No. 11	Davidson South

No. 11	Macdowell Access	No. 22	Earl Grey Service Road
No. 12	Gruenfeldt Access	No. 23	Caragana Access
No. 12	Waldheim Access ( <i>SPECIAL RESTRICTION – 8,000kgs</i> )	No. 23	Zenon Park Access
No. 13	Pangman Access	No. 23	Weekes Access
No. 13	Khediye Access	No. 25	Birch Hills Access
No. 13	Trossachs Access	No. 25	Hagen Access
No. 13	Bellegarde Access ( <i>SPECIAL RESTRICTION – 8,000kgs</i> )	No. 27	Aberdeen Access
No. 13	Arcola Access	No. 31	Herschel Access
No. 13	Forget Access ( <i>SPECIAL RESTRICTION – 8,000kgs</i> )	No. 33	Osage Access Road
No. 14	Senlac Access	No. 35	Wishart Access
No. 15	Service Road – All thin membrane surfaced roads from Fenwood to Leross	No. 35	Sylvania Access
No. 15	Punnichy Access	No. 35	Ridgedale Access
No. 15	Conquest Access	No. 35	Aylsham Access ( <i>SPECIAL RESTRICTION – 8,000kgs</i> )
No. 15	Milden Access	No. 39	Mc Taggart Service Road
No. 15	Sovereign Access	No. 39	Wilcox Service Road
No. 15	Semans Access	No. 39	Roche Percee Access
No. 16	Jansen Access	No. 40	Speers Access
No. 16	Guernsey Access	No. 40	David Laird Campground Access ( <i>YEAR ROUND RESTRICTION – 8,000kgs</i> )
No. 16	Plunkett Access	No. 40	Leask Access
No. 16	Viscount Access	No. 40	Marcelin Access
No. 16	Bradwell Access ( <i>SPECIAL RESTRICTION – 8,000kgs</i> )	No. 41	Hwy 41 North to Aberdeen
No. 16	Dalmeny Access from Jct 16 to Jct 305	No. 43	Palmer Access
No. 18	Beaubier	No. 44	Plato Access
No. 18	Gladmar Access	No. 44	Glidden Access
No. 18	Big Beaver Access	No. 45	Coteau Beach Access
No. 18	McCord Access	No. 48	Fairlight Access
No. 19	Strongfield Access	No. 48	Kendal Service Road
No. 19	Hawarden Access	No. 48	Odessa Service Road
No. 19	Kincaid Access	No. 48	Vibank Service Road
No. 20	Middle Lake Access	No. 49	Hazel Dell Access
No. 20	St. Benedict Access	No. 49	Hyas Access
No. 20	Tway Access	No. 49	Stenen Access
No. 20	Duval Access	No. 51	Handel Access
No. 20	Bulyea Access	No. 51	Ruthilda Access
No. 21	Golden Prairie Access	No. 51	Major Access
No. 21	Mendham Access ( <i>JCT 21 to 8.1 KM West</i> ) ( <i>SPECIAL RESTRICTION – 8,000kgs</i> )	No. 55	Love Access
No. 22	Atwater Access	No. 55	Garrick Access
No. 22	Grayson Access	No. 55	Choceland Access
No. 22	Gerald Access	No. 55	Snowden Access
No. 22	Dysart Access	No. 80	Yarbo Access
		No. 123	Cumberland House Bridge to the Cumberland House Airport
		No. 155	Buffalo Narrows Airport
		No. 219	Glenside Access

No. 219 Riverside Estate Access  
 No. 219 Furdale Access  
 No. 312 Laird Access (*SPECIAL RESTRICTION – 8,000kgs*)  
 No. 322 Kanata Valley Access

No. 322 Saskatchewan Beach Access  
 No. 349 Saint-Front Access  
 No. 363 Coderre Access  
 No. 363 Shamrock Access  
 No. 364 Edenwold Access

**The following Rural Municipalities are subject to Spring Road Restrictions**

6	CAMBRIA	134	SHAMROCK	245	GARRY
7	SOURIS VALLEY	135	LAWTONIA	246	ITUNA BON ACCORD
8	LAKE ALMA	142	ENTERPRISE	248	TOUCHWOOD
10	HAPPY VALLEY	151	ROCANVILLE	250	LAST MOUNTAIN VALLEY
11	HART BUTTE	153	WILLOWDALE	251	BIG ARM
12	POPLAR VALLEY	154	ELCAPO	255	COTEAU
38	LAURIER	155	WOLSELEY	256	KING GEORGE
40	BENGOUGH	156	INDIAN HEAD	260	NEWCOMBE
42	WILLOW BUNCH	157	SOUTH QU'APPELLE	271	COTE
43	OLD POST	159	SHERWOOD	273	SLIDING HILLS
45	MANKOTA	164	CHAPLIN	274	GOOD LAKE
49	WHITE VALLEY	166	EXCELSIOR	275	INSINGER
51	RENO	181	LANGENBURG	276	FOAM LAKE
65	TECUMSEH	184	GRAYSON	277	EMERALD
67	WEYBURN	187	NORTH QU'APPELLE	279	MOUNT HOPE
68	BROKENSHELL	189	LUMSDEN	280	WREFORD
69	NORTON	190	DUFFERIN	281	WOOD CREEK
71	EXCEL	191	MARQUIS	282	MCCRANEY
72	LAKE OF THE RIVERS	193	EYEBROW	283	ROSEDALE
73	STONEHENGE	194	ENFIELD	284	RUDY
94	HAZELWOOD	214	CANA	285	FERTILE VALLEY
95	GOLDEN WEST	215	STANLEY	301	ST. PHILIPS
96	FILLMORE	216	TULLYMET	303	KEYS
97	WELLINGTON	217	LIPTON	304	BUCHANAN
101	TERRELL	218	CUPAR	307	ELFROS
103	SUTTON	219	LONGLAKETON	309	PRAIRIE ROSE
104	GRAVELBOURG	220	MCKILLOP	310	USBORNE
110	PIAPOT	223	HURON	312	MORRIS
122	MARTIN	224	MAPLE BUSH	313	LOST RIVER
123	SILVERWOOD	225	CANAAN	314	DUNDURN
124	KINGSLEY	226	VICTORY	315	MONTROSE
125	CHESTER	228	LACADENA	316	HARRIS
126	MONTMARTRE	229	MIRY CREEK	320	OAKDALE
127	FRANCIS	230	CLINTWORTH	331	LIVINGSTON
128	LAJORD	241	CALDER	333	CLAYTON
132	HILLSBOROUGH	243	WALLACE	334	PREECEVILLE
133	RODGERS	244	ORKNEY	335	HAZEL DELL

336	SASMAN	382	EYE HILL	470	PAYNTON
338	LAKESIDE	394	HUDSON BAY	486	MOOSE RANGE
339	LEROY	395	PORCUPINE	487	NIPAWIN
340	WOLVERINE	398	PLEASANTDALE	488	TORCH RIVER
341	VISCOUNT	399	LAKE LENORE	490	GARDEN RIVER
343	BLUCHER	400	THREE LAKES	491	BUCKLAND
344	CORMAN PARK	401	HOODOO	493	SHELLBROOK
345	VANSCOY	402	FISH CREEK	494	CANWOOD
346	PERDUE	403	ROSTHERN	496	SPIRITWOOD
347	BIGGAR	406	MAYFIELD	497	MEDSTEAD
349	GRANDVIEW	409	BUFFALO	498	PARKDALE
350	MARIPOSA	410	ROUND VALLEY	499	MERVIN
351	PROGRESS	427	TISDALE	501	FRENCHMAN BUTTE
352	HEART'S HILL	428	STAR CITY	520	PADDOCKWOOD
366	KELVINGTON	431	ST. LOUIS	521	DISTRICT OF LAKELAND
368	SPALDING	437	NORTH BATTLEFORD	555	BIG RIVER
369	ST. PETER	438	BATTLE RIVER	561	LOON LAKE
370	HUMBOLDT	440	HILLSDALE	588	MEADOW LAKE
371	BAYNE	457	CONNAUGHT	622	BEAVER RIVER
372	GRANT	460	BIRCH HILLS		
373	ABERDEEN	461	PRINCE ALBERT		
376	EAGLE CREEK	463	DUCK LAKE		
377	GLENSIDE	464	LEASK		
378	ROSEMOUNT	466	MEETING LAKE		
379	REFORD	467	ROUND HILL		
381	GRASS LAKE	468	MEOTA		



**The following section is not part of the Order but is appended as INFORMATION:  
Special Weight Restrictions on Selected Provincial Highways.**

**The following highways are subject to reduced weights, year round, by regulation in accordance with the *Vehicle Weight and Dimension Regulations, 2010***

Hwy	From	To	Description
955	South abutment of the Douglas River Bridge	Northern most limit of Highway 955	Maximum GVW 41 500 kg

**The following BRIDGES are restricted by Minister's ORDER to a maximum gross vehicle weight of Secondary Weights year-round. Winter Weights are not allowed.**

Hwy	Bridge Location Description
2	Bridge over Little Red River from Southern Bridge Abutment to Northern Bridge Abutment. Bridge is located approximately 4.4 km south of Jct. with Hwy 355 and Hwy 2 near Spruce Home. <b>Bridge is located on East Frontage Road.</b>
3	Bridge over Red Deer River from Eastern Bridge Abutment to Western Bridge Abutment located approximately .5km west of Erwood, Sk.
4 Metinota Access	Bridge over Jackfish Narrows from Eastern Bridge Abutment to Western Bridge Abutment. Bridge is located in access road approximately 3.1km west of the Jct. with Hwy 4. <b>Bridge is located on access road.</b>
312 Gabriel Dumont Bridge	Truss Bridge over South Saskatchewan River from Eastern Bridge Abutment to Western Bridge Abutment.
334	Bridge over Willow Creek from Eastern Bridge Abutment to Western Bridge Abutment. Bridge is located approximately 18.6 km east of Avonlea, sk. and the Jct. with Hwy 339 and Hwy 334.
919	Bridge over Martineau River from Southern Bridge Abutment to Northern Bridge Abutment. Bridge is located approximately 39.5km northwest of the Jct. with Hwy 21 and Hwy 950
935	Bridge over Morin River from the Southern Bridge Abutment to the Northern Bridge Abutment. Bridge is located approximately 7km north of the Jct. with Hwy 165 and Hwy 935.
955 Clearwater Truss Bridge	Truss Bridge over Clearwater River from Southern Bridge Abutment to Northern Bridge Abutment. Bridge is located approximately - 62 km north of Jct 155 and 955 to the Clearwater Bridge.
980 Elbow Lake Access	Bridge over Midnight Creek from Eastern Bridge Abutment to Western Bridge Abutment. Bridge is located approximately .3 km west of Elbow Lake, Sk.. <b>The bridge is located on Spirit Lake/Elbow Lake access road.</b>

**The following BRIDGES are restricted by Minister's ORDER to a maximum gross vehicle weight of Primary Weights year-round. Winter Weights are not allowed.**

Hwy	Bridge Location Description
2	Northbound Bridge over Hwy 1 from Southern Bridge Abutment to Northern Bridge Abutment. Bridge is located North of Moose Jaw at Jtc. with Hwy 1 and Hwy 2
2	Southbound Bridge over Hwy 1 from Southern Bridge Abutment to Northern Bridge Abutment. Bridge is located north of Moose Jaw Sk. at Jtc. with Hwy 1 and Hwy 2
6	Bridge over Barrier River Overflow from Southern Bridge Abutment to Northern Bridge Abutment. Bridge is located approximately 25.7 km south of Melfort, Sk.

The following highways are restricted by Minister's ORDER to a maximum gross vehicle weight of 8 000 kilograms year round.

Highway	From	To
1 Caron Access	Jct Hwy 1	Hamlet of Caron
1 Grand Coulee Access	Jct Hwy 1	Village of Grand Coulee
2 Eastside Service Road near Prince Albert	Jct Boundary Street East Service Rd north	Jct Township Road (approx. 2.4 kms)
4 Blumenhof Access	Jct Hwy 4 east	Blumenhof
6 Leroy Access	Jct Hwy 6	Town of Leroy
8 Tantallon Access	Jct. Hwy 8	Village of Tantallon
12 Hepburn Access	Jct. Hwy 12	Village of Hepburn
12 Waldheim Access	Jct. Hwy 12	100 meters west of the west boundary of NW 15-42-5 W3M in the town of Waldheim.
13 Bellegarde Access	Jct. Hwy 13	Bellegarde
13 Forget Access	Jct. Hwy 13	The Village of Forget
15	Jct. Hwy 16	Jct. Hwy 9
16 Bradwell Access	Jct. Hwy 16	Village of Bradwell
21 Mendham Access	Jct Hwy 21 Mendham Access	Intersection with the North-South portion of the Municipal Alternate Truck Route
30	Eston Regional Park located at the southwest corner of Section 20, Township 23, Range 20, West 3rd Meridian	The jct. of municipal Hwy located at the north-east corner of Section 34, Township 28, Range 20, West 3rd Meridian
31	Jct. Hwy 4	Herschel Access Road
31	Grid 656 at NW corner of Section 34, Township 31, Range 17, west of the 3rd Meridian	The intersection of the Plenty grid at the NW corner, Section 21, Township 32, Range 19, west of the 3rd Meridian
39 Bienfait Access	Jct Hwy 39	Jct Hwy 18 (In the Town of Bienfait)
40 David Laird Campsite Road	Jct No. Hwy 40	Jct Hwy No. 16
41 Alvena Access	Jct Hwy 41	2nd Avenue in Village of Alvena
42	Jct Hwy 42 - Keeler Service Road/Railway Ave. S.	Keeler Service Road/Railway Ave. to RM Road 643
42 (1)	Jct Hwy 373	Jct Hwy 45 in the Town of Lucky Lake

42	From its Jct with Hwy 44 (km 43.68)	its Jct with Hwy 15 (km 59.92), for a total of 16.2 km.
44(1)	<i>Jct Hwy 19</i>	<i>Junction with the Danielson Provincial Park Access located in the southeast of Section 32, Township 26, Range 6, West of the 3rd Meridian.</i>
44(1)	<i>Jct Hwy 21</i>	<i>Westerly to the Jct with the municipal road located in the NE 1/4 of Section 24, Township 26, Range 27, west of the 3rd Meridian</i>
44(1)	<i>Jct with the municipal road located at the SW 1/4 of Section 26, Township 26, Range 27, west of the 3rd Meridian</i>	<i>Jct with the municipal road located east of Section 31, Township 26, Range 27, west of the 3rd Meridian</i>
306	Riceton	Jct Hwy 6
308	Jct Hwy 8	Jct with Primary Grid 600
310	Jct of Grid 743	Jct of Hwy No. 16
312 Laird Access	Jct Hwy 312	The Village of Laird
332	7.1 km west of Jct Hwy 32	The Village of Hazlet except for that portion between the east and west Jct of Hwy 37
334	Jct Hwy 13	3.3 km south of Jct Hwy 339
339	Village of Avonlea	Jct. of Hwy 39 except for that portion from 11.4 km west of Avonlea to 21.2 km west of Avonlea
342	Jct Hwy 4	Jct of Primary Grid 647 north of Lacadena
371	Jct Hwy 21	Alberta Border

The following highways are restricted by Minister's ORDER to a maximum gross vehicle weight of 8 000 kilograms from March 1<sup>st</sup> to November 30<sup>th</sup> each year.

Hwy	From	To
302	Cecil Ferry Road at the SE corner of Section 22, Township 48, Range 24, west of the 2nd Meridian	Jct of the municipal road located at SE corner of Section 5, Township 49, Range 22, west of second Meridian (located by the Weldon Ferry)

The following access road is restricted by Minister's ORDER to a maximum gross vehicle weight of 8 000 kilograms from March 1<sup>st</sup> to November 30<sup>th</sup> each year.

Hwy	From	To
2 Paddockwood Access	Jct Hwy 2	Grid Road intersection NE Section 23, Township 52, Range 25, W2nd Meridian

The following highway is restricted by Minister's ORDER to a maximum gross vehicle weight of 8 000 kilograms from March 15<sup>th</sup> to November 15<sup>th</sup> each year and *when the ambient temperature is above -6°C*.

Hwy	From	To
8	0.5 km North of Junction Highway 49 at Norquay	The community of Swan Plain at the south boundary of SE 27-36-1-W2M

The following Access Road is restricted by Minister's ORDER to a maximum gross vehicle weight of 8 000 kilograms from February 24 to November 15<sup>th</sup> each year and *when the ambient temperature is above -6°C*.

Hwy	From	To
35 Aylsham Access	Hwy 35 (NW corner of section 32, township 48, range 14, west of second Meridian)	Aylsham (NE corner of section 34, township 48, range 13, west of second Meridian)

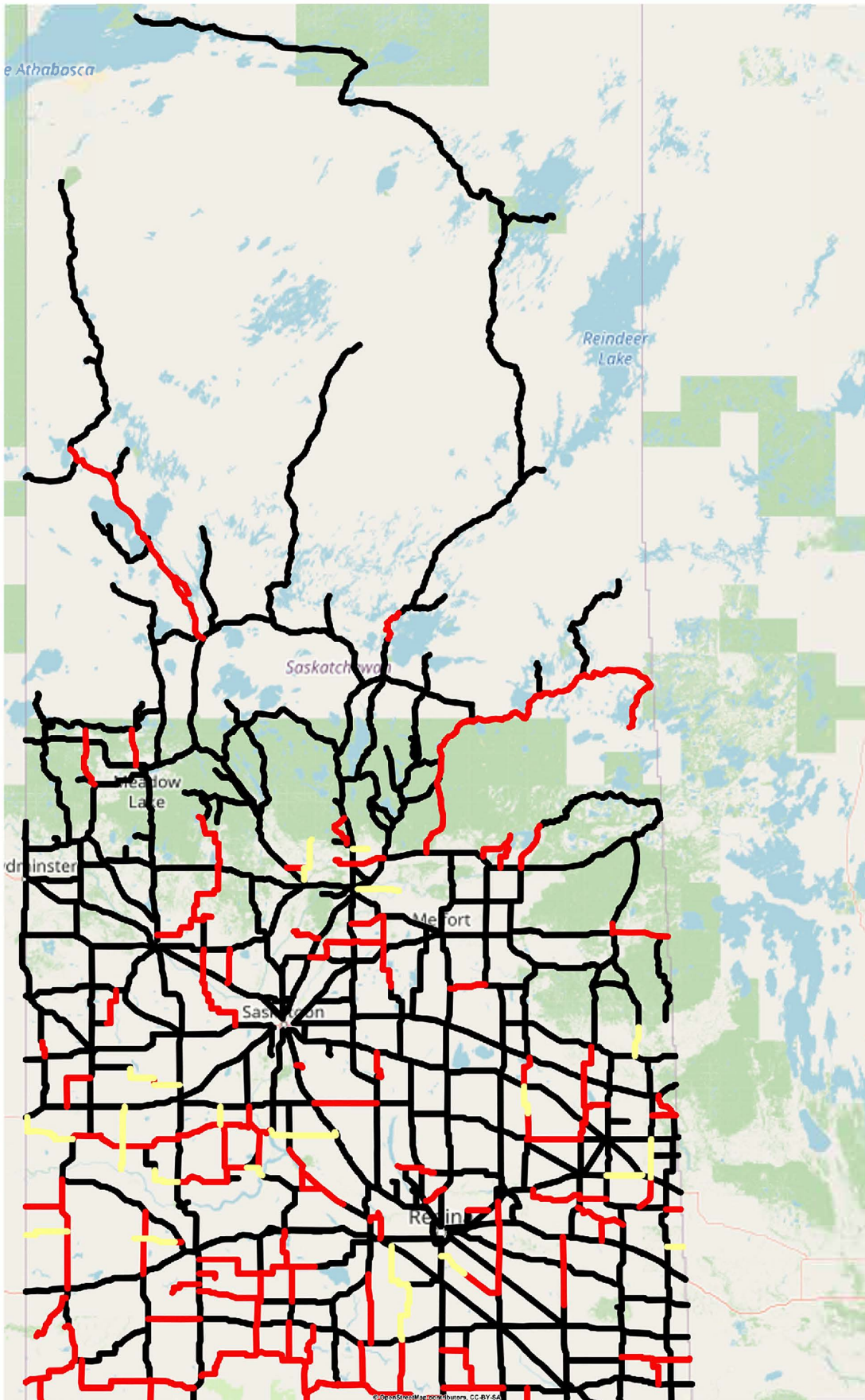
The following highway is restricted by Minister's ORDER to a maximum gross vehicle weight of 75% of primary highway weights, except during winter weight season, when winter secondary weights shall apply.

Hwy	From	To
240	Junction Highway 55	No. 240 - From Jct Hwy 55 to Prince Albert National Park SPECIAL RESTRICTIONS – 4.5 kg per mm (252 lbs/in) width of tire (manufacturer's stamped dimension) on any wheel to a maximum GVW of 22,686 kg (50,000 lbs), including the steering axle.




For detailed information on Rural Roads, call the local rural municipality or for Provincial Highway information email the Highway Hotline [hotline@gov.sk.ca](mailto:hotline@gov.sk.ca). The rural municipality administers and maintains the alternate haul routes. They are also responsible for issuing any overweight permits associated with the alternate haul routes.

Saskatchewan Ministry of Highways and Infrastructure provides seasonal highway restriction information on the Internet at: <http://www.saskatchewan.ca/truckingweights> under Special Weights.

Truckers can also contact the Saskatchewan Ministry of Highways, Trucking inquiry line at Toll free in Saskatchewan: 1-866-933-5290 Out of Saskatchewan: 306-933-5290 email: [mhitrucking@gov.sk.ca](mailto:mhitrucking@gov.sk.ca)



**Winter Weight Season**

-  In Effect
-  Not In Effect
-  Future Restrictions

**Spring Weight Season**

-  No Restrictions
-  Restricted
-  Future Restrictions

**Special Weight Restrictions**

-  Special Weight Restrictions

Notes